

CLEVELAND

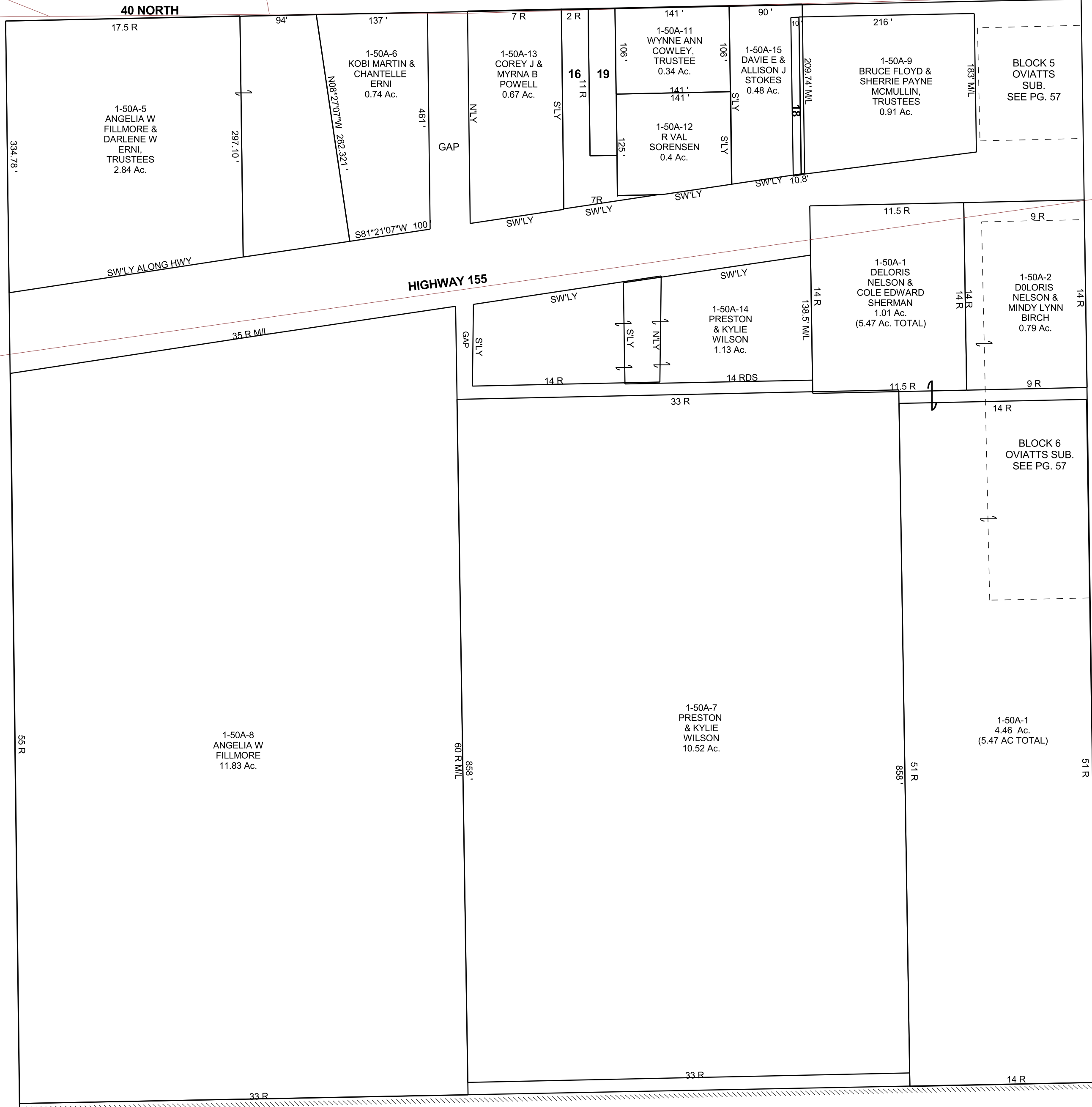
SE/4 NW/4 SECTION 13, T 17 S, R 09 E S.L.B. & M.

BOOK 1 PAGE 50A
SCALE: 1" = 100'
SEPTEMBER 23, 2019

THIS PLAT IS MADE SOLELY FOR THE PURPOSE
OF ASSISTING IN LOCATING THE LAND, AND
THE RECORDER ASSUMES NO LIABILITY FOR
VARIATIONS, IF ANY, WITH AN ACTUAL SURVEY.



40 NORTH



1-50A-16
COREY J &
MYRNA B
POWELL
0.23 Ac.

1-50A-18
DAVID & NIKIE
STOKES
0.045 Ac.

1-50A-19
COREY J &
MYRNA B
POWELL
0.14 Ac.

BLOCK 5
OVIATTS
SUB.
SEE PG. 57

1-50A-1
DELORIS
NELSON &
COLE EDWARD
SHERMAN
1.01 Ac.
(5.47 Ac. TOTAL)

1-50A-2
DOLORIS
NELSON &
MINDY LYNN
BIRCH
0.79 Ac.

1-50A-14
PRESTON
& KYLIE
WILSON
1.13 Ac.

BLOCK 6
OVIATTS SUB.
SEE PG. 57

1-50A-1
4.46 Ac.
(5.47 AC TOTAL)

1-50A-7
PRESTON
& KYLIE
WILSON
10.52 Ac.

1-50A-8
ANGELIA W
FILLMORE
11.83 Ac.

1-50A-5
ANGELIA W
FILLMORE &
DARLENE W
ERNI,
TRUSTEES
2.84 Ac.

1-50A-6
KOBI MARTIN &
CHANTELLE
ERNI
0.74 Ac.

1-50A-13
COREY J &
MYRNA B
POWELL
0.67 Ac.

1-50A-11
WYNNE ANN
COWLEY,
TRUSTEE
0.34 Ac.

1-50A-15
DAVIE E &
ALLISON J
STOKES
0.48 Ac.

1-50A-9
BRUCE FLOYD &
SHERRIE PAYNE
MCMULLIN,
TRUSTEES
0.91 Ac.

1-50A-12
R VAL
SORENSEN
0.4 Ac.