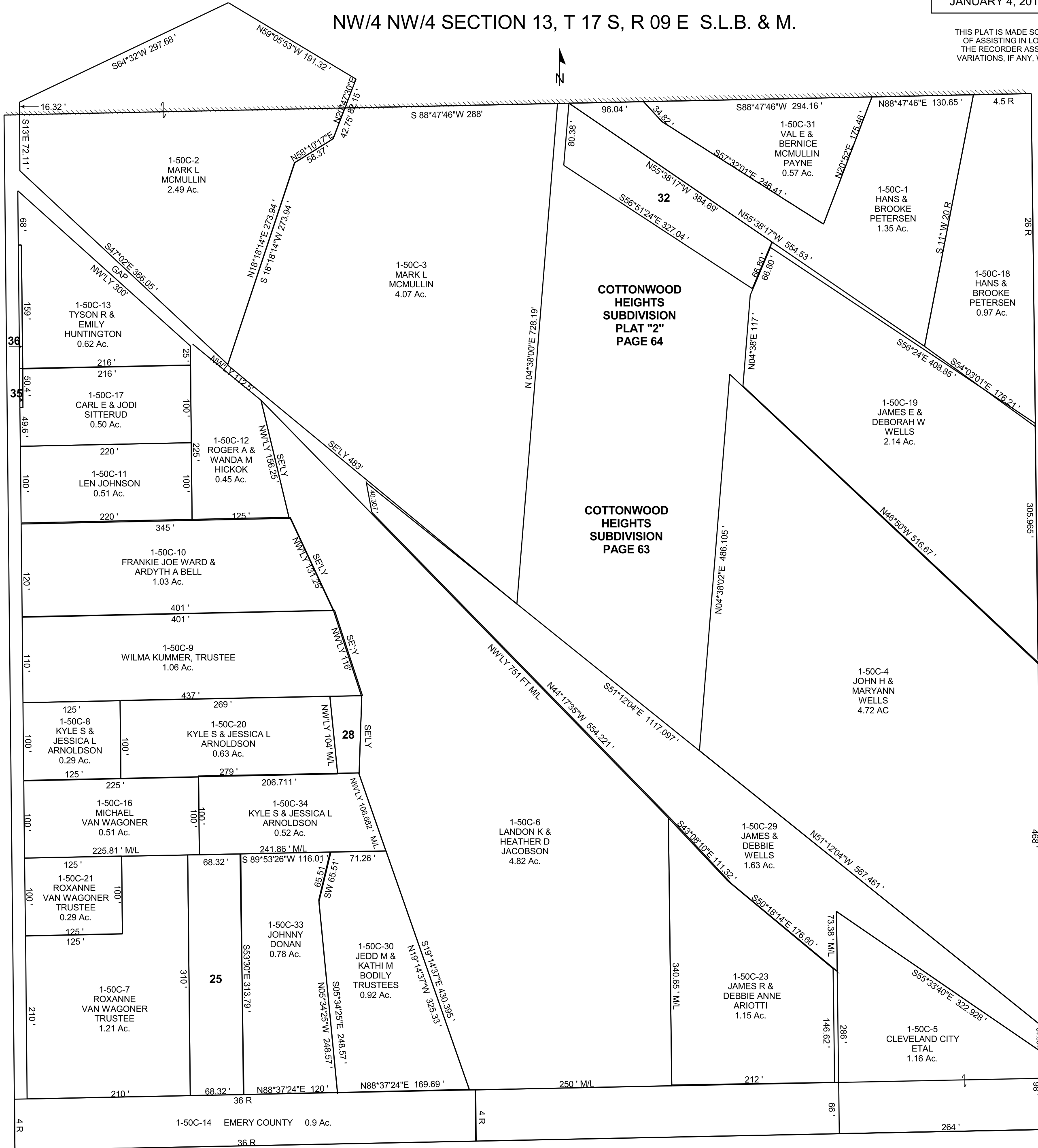


CLEVELAND

NW/4 NW/4 SECTION 13, T 17 S, R 09 E S.L.B. & M.

BOOK 1 PAGE 50C
SCALE: 1" = 100'
JANUARY 4, 2018

THIS PLAT IS MADE SOLELY FOR THE PURPOSE OF ASSISTING IN LOCATING THE LAND, AND THE RECORDER ASSUMES NO LIABILITY FOR VARIATIONS, IF ANY, WITH AN ACTUAL SURVEY.



1-50C-25
DAISY
VAN WAGONER
0.49 Ac.

1-50C-28
LAMAR &
WILMA
KUMER
0.079 Ac.

1-50C-32
HANS &
BROOKE
PETERSEN
0.47 Ac.

1-50C-35
CLEVELAND CITY
0.01 Ac.

1-50C-36
CLEVELAND CITY
0.02 Ac.

- 1-50C-31
VAL E &
BERNICE
MCMULLIN
PAYNE
0.57 Ac.
- 1-50C-1
HANS &
BROOKE
PETERSEN
1.35 Ac.
- 1-50C-18
HANS &
BROOKE
PETERSEN
0.97 Ac.
- 1-50C-19
JAMES E &
DEBORAH W
WELLS
2.14 Ac.
- 1-50C-4
JOHN H &
MARYANN
WELLS
4.72 AC
- 1-50C-29
JAMES &
DEBBIE
WELLS
1.63 Ac.
- 1-50C-23
JAMES R &
DEBBIE ANNE
ARIOTTI
1.15 Ac.
- 1-50C-5
CLEVELAND CITY
ETAL
1.16 Ac.