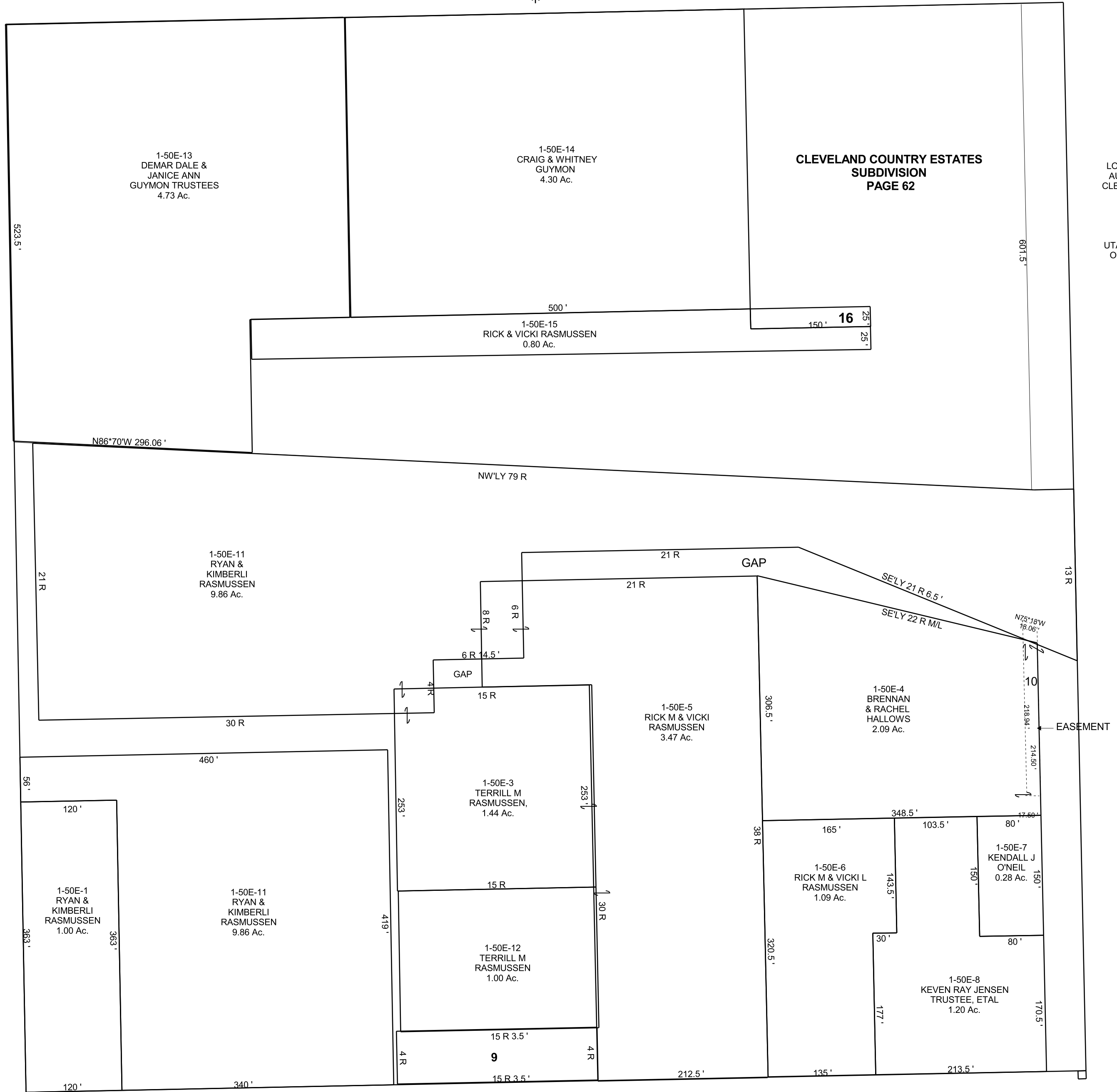


CLEVELAND

NE/4 NE/4 SECTION 13, T 17 S, R 09 E S.L.B. & M.

THIS PLAT IS MADE SOLELY FOR THE PURPOSE  
OF ASSISTING IN LOCATING THE LAND, AND  
THE RECORDER ASSUMES NO LIABILITY FOR  
VARIATIONS, IF ANY, WITH AN ACTUAL SURVEY.



1-50E-9  
LOCAL BUILDING  
AUTHORITY OF  
CLEVELAND TOWN  
0.38 Ac.

1-50E-10  
UTAH DEPARTMENT  
OF TRANSPORTA  
0.087 Ac.

1-50E-16  
JERRY L &  
CYNTHIA B  
OVESON  
0.09 Ac.

EASEMENT