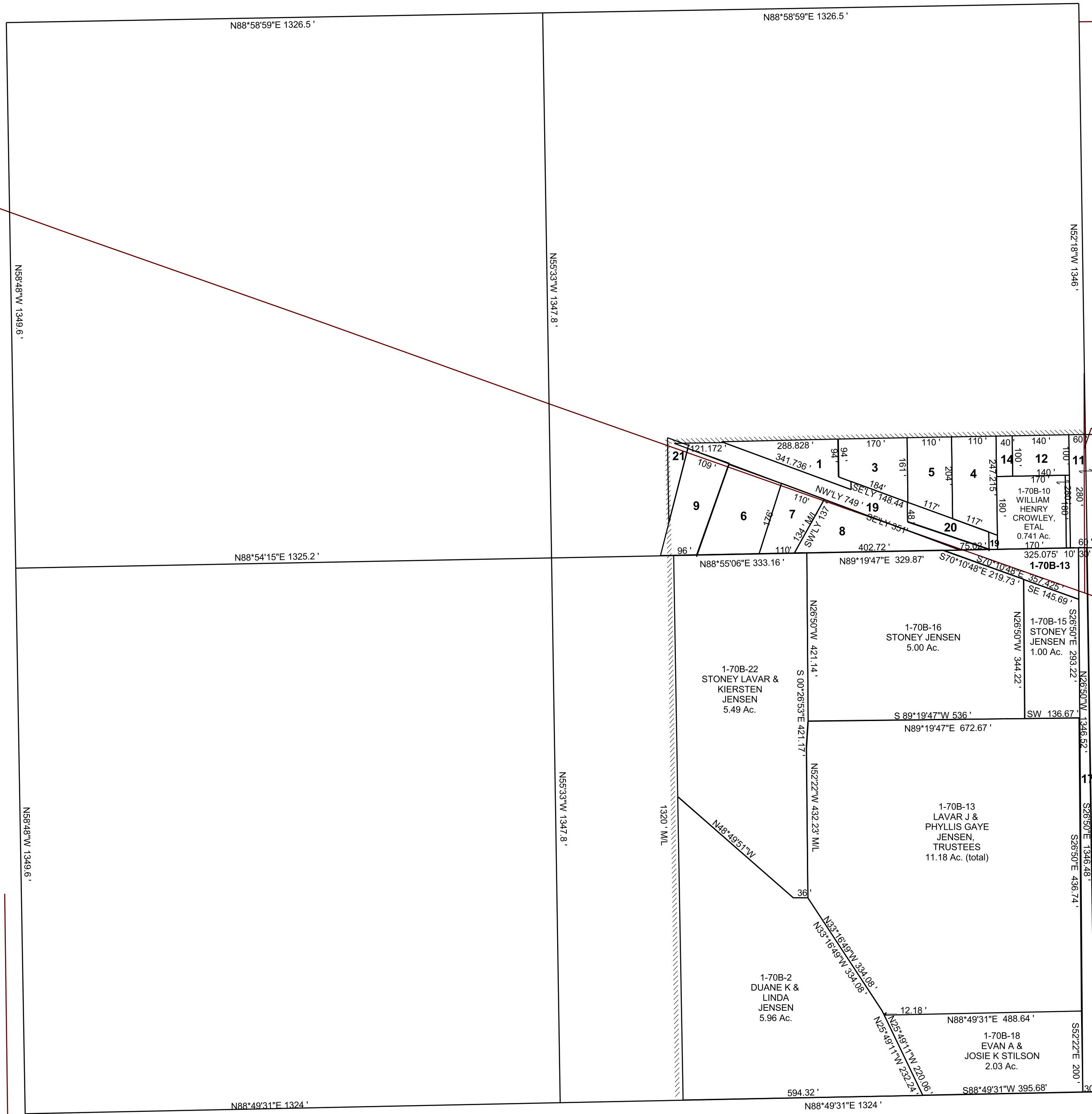


ELMO

NW/4 SECTION 32, T 16 S, R 10 E S.L.B. & M.

BOOK 1 PAGE 70B
SCALE: 1" = 200'
OCTOBER 18, 2017

THIS PLAT IS MADE SOLELY FOR THE PURPOSE
OF ASSISTING IN LOCATING THE LAND, AND
THE RECORDER ASSUMES NO LIABILITY FOR
VARIATIONS, IF ANY, WITH AN ACTUAL SURVEY.



- 1-70B-1
HOWARD
VAN WAGONER
0.39 Ac.
- 1-70B-3
RONALD CHARLES
WIGGINS
0.50 Ac.
- 1-70B-4
J LEO &
SUE A
FERRAN
0.57 Ac.
- 1-70B-5
LEO & SUE
FERRAN
0.46 Ac.
- 1-70B-6
NEILS C &
LINDA F
ANDERSON
0.69 Ac.
- 1-70B-7
JASON R
LIVINGSTON
0.4 Ac.
- 1-70B-8
HOWARD DALE &
MARY COLLETTE
VAN WAGONER
0.62 Ac.
- 1-70B-9
PAULA NIELSEN
TRUSTEE
0.58 Ac.
- 1-70B-11
ELMO TOWN
0.39 Ac.
- 1-70B-12
DALE & COLETTE
VAN WAGONER
0.32 Ac.
- 1-70B-14
HOWARD D &
MARY C
VAN WAGONER
0.092 Ac.
- 1-70B-17
ELMO TOWN
0.93 Ac.
- 1-70B-19
HOWARD DALE &/OR
COLLETTE
VAN WAGONER
0.76 Ac.
- 1-70B-20
J LEO & SUE A
FERRAN
0.21 Ac.
- 1-70B-21
DAVID A &
JOANNE E
VAN WAGONER
0.10 Ac.

SEE PAGE 70 A

1-70B
32-16S-10E