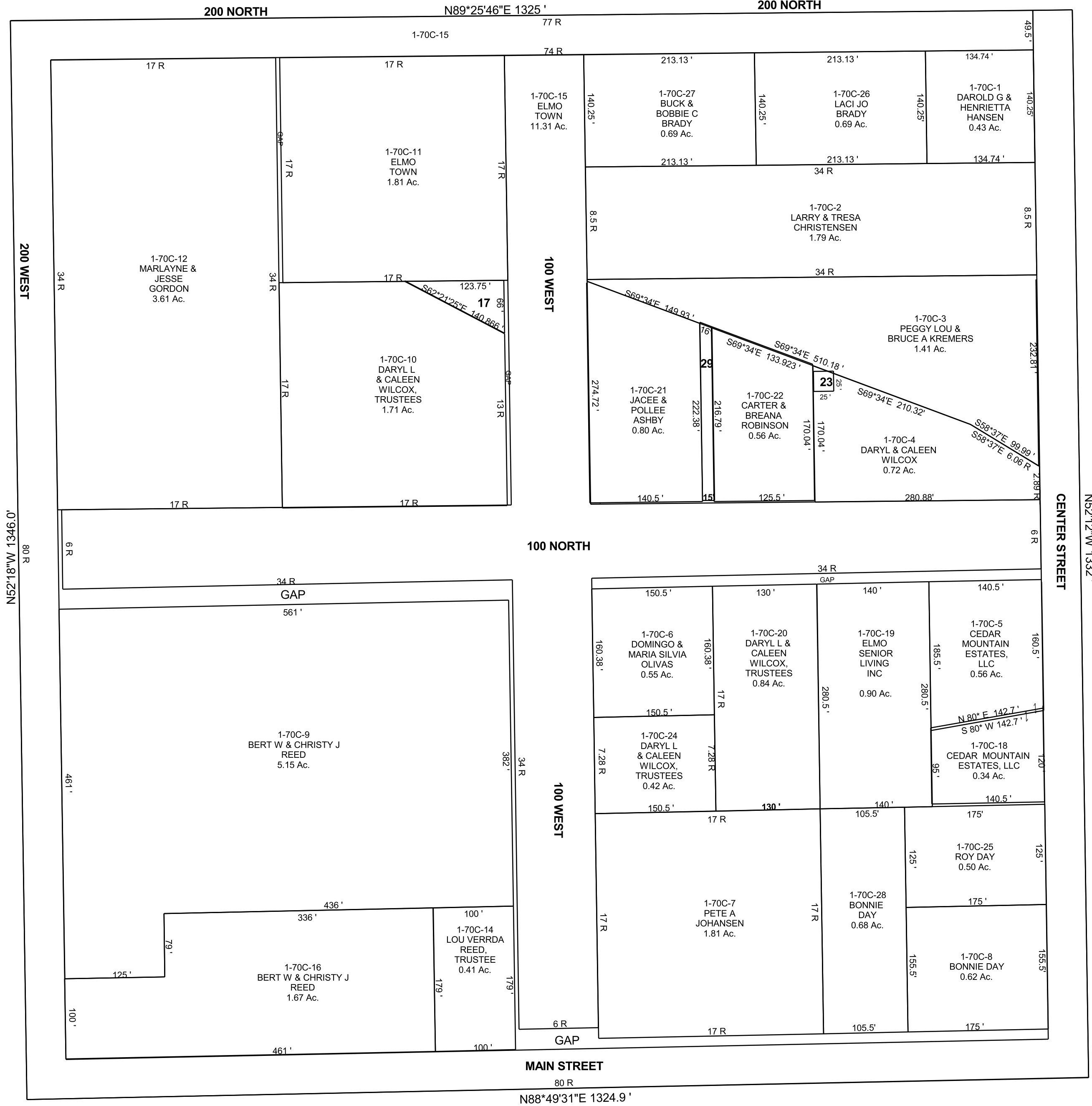


ELMO

SW/4 NE/4 SECTION 32, T 16 S, R 10 E S.L.B. & M.

BOOK 1 PAGE 70C
SCALE: 1" = 100'
APRIL 30, 2019

THIS PLAT IS MADE SOLELY FOR THE PURPOSE
OF ASSISTING IN LOCATING THE LAND, AND
THE RECORDER ASSUMES NO LIABILITY FOR
VARIATIONS, IF ANY, WITH AN ACTUAL SURVEY.



1-70C-17
EMERY
COUNTY
0.094 Ac.

1-70C-23
CARTER
& BREANA
ROBINSON
0.01 Ac.

1-70C-29
JACEE &
POLLEE
ASHBY
0.08 Ac.