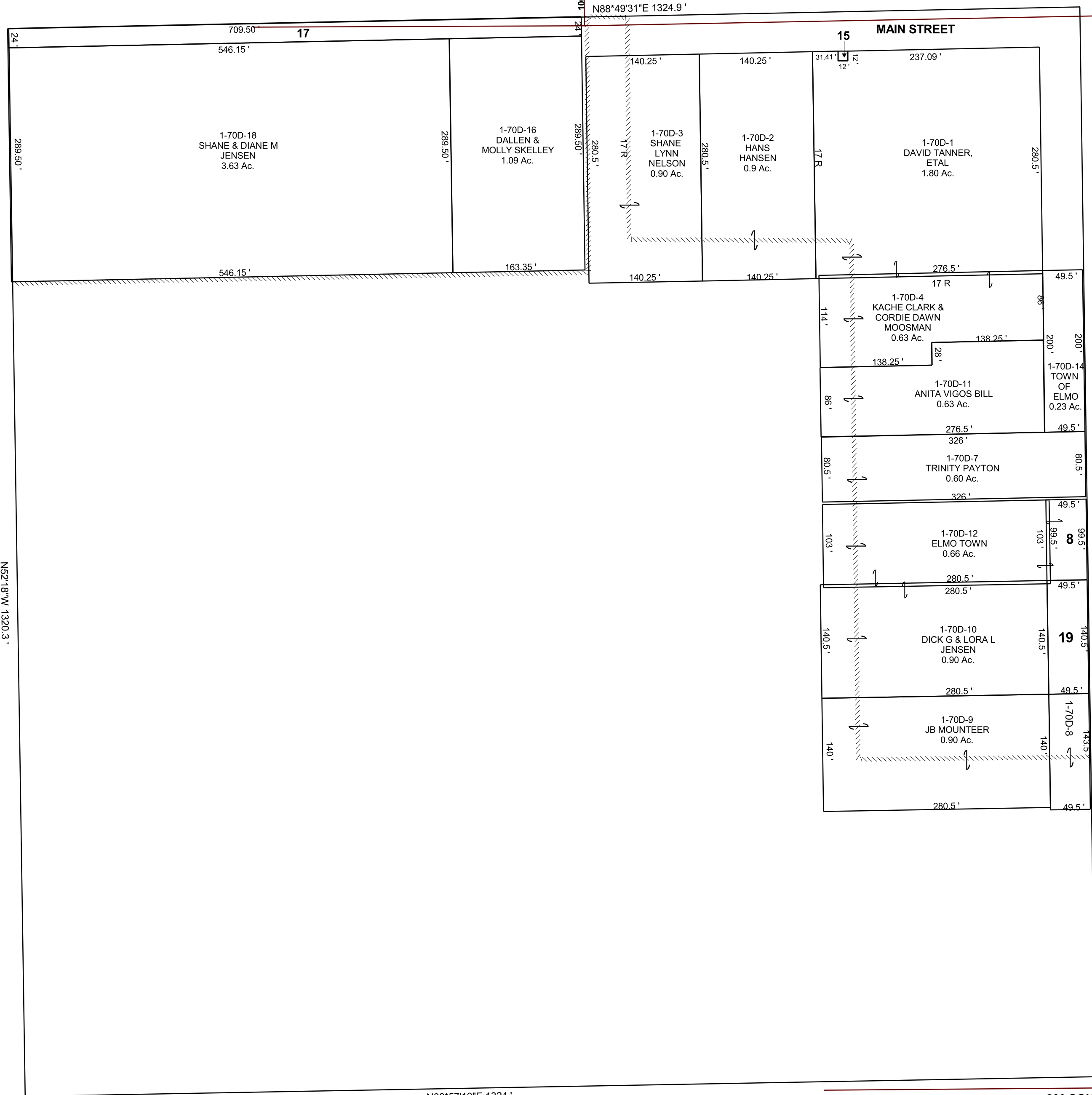


ELMO

NW/4 SE/4 SECTION 32, T 16 S, R 10 E S.L.B. & M.

THIS PLAT IS MADE SOLELY FOR THE PURPOSE
OF ASSISTING IN LOCATING THE LAND, AND
THE RECORDER ASSUMES NO LIABILITY FOR
VARIATIONS, IF ANY, WITH AN ACTUAL SURVEY.



- 1-70D-8
EMERY COUNTY
0.28 Ac.
- 1-70D-15
EMERY TELEPHONE
0.003 Ac.
- 1-70D-17
ELMO TOWN
0.39 Ac.
- 1-70D-19
DICK G & LORA L
JENSEN
0.16 Ac.

CENTER STREET

100 SOUTH

200 SOUTH

1-70D