

ELMO TOWN

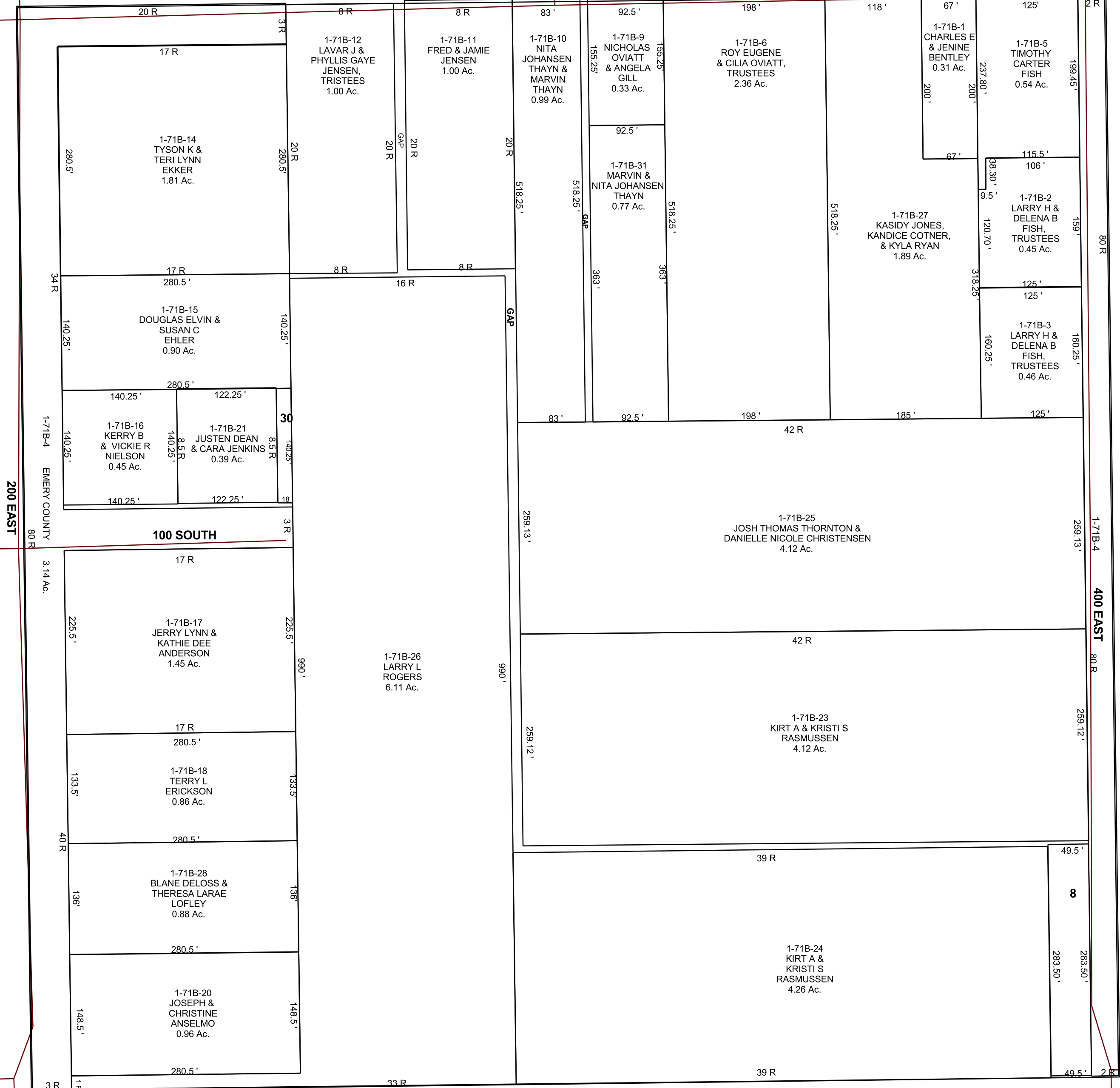
NW/4 SW/4 SECTION 33, T 16 S, R 10 E S.L.B. & M.

BOOK 1 PAGE 71B
SCALE: 1" = 100'
SEPTEMBER 13, 2022

THIS PLAT IS MADE SOLELY FOR THE PURPOSE
OF ASSISTING IN LOCATING THE LAND, AND
THE RECORDER ASSUMES NO LIABILITY FOR
VARIATIONS, IF ANY, WITH AN ACTUAL SURVEY.



MAIN STREET



200 EAST

EMERY COUNTY

100 SOUTH

400 EAST

1-71B
33-16S-10E