

EMERY TOWN

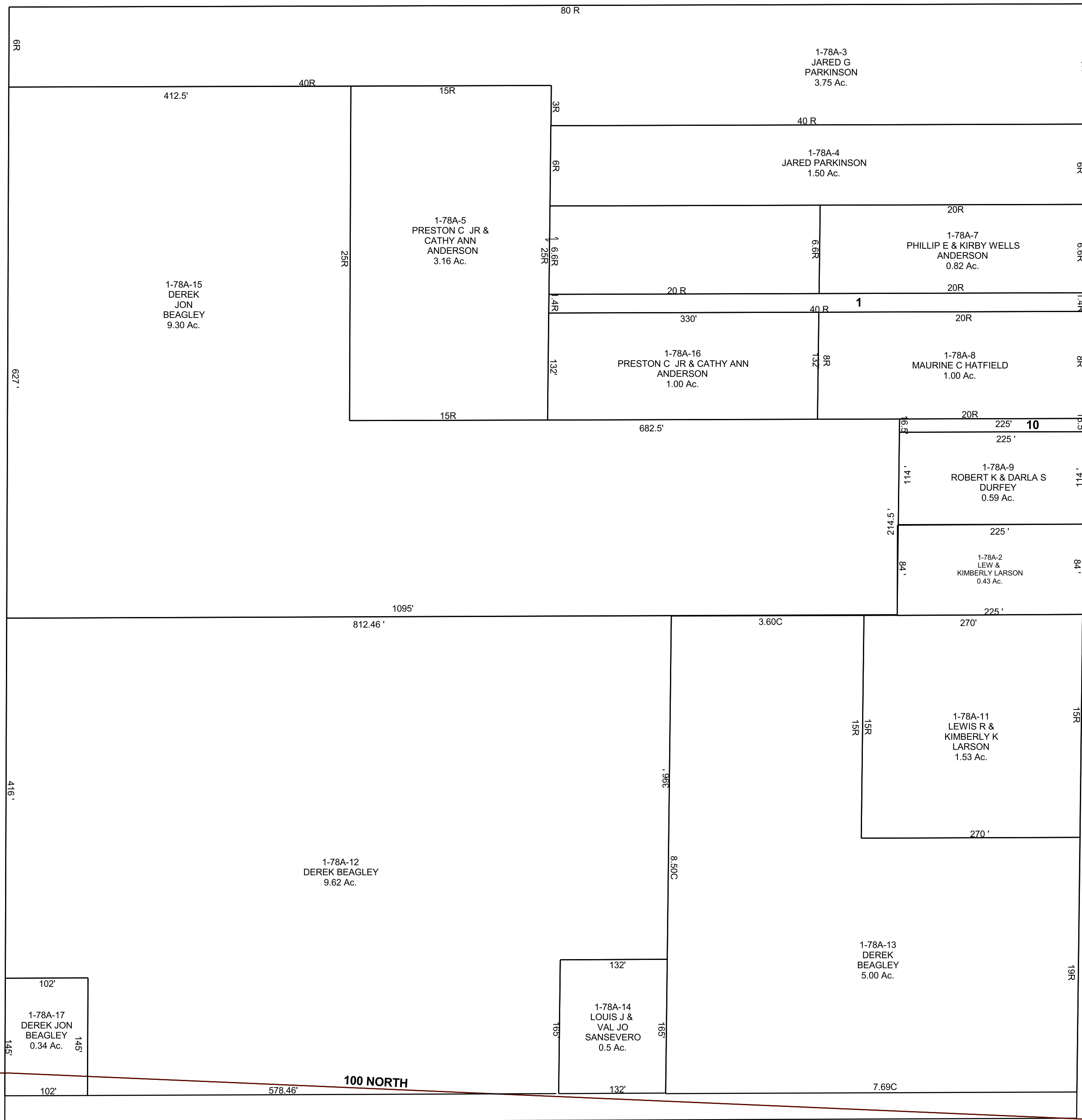
BOOK 1 PAGE 78A  
SCALE: 1" = 100'  
MAY 4, 2017

EX

DUE TO OVERSIZED SECTION  
SOME LINE ADJUSTMENTS  
HAVE BEEN MADE TO CLOSE  
GAPS ON THIS PLAT.

SE/4 SW/4 SECTION 4, T 22 S, R 06 E S.L.B. & M.

THIS PLAT IS MADE SOLELY FOR THE PURPOSE  
OF ASSISTING IN LOCATING THE LAND, AND  
THE RECORDER ASSUMES NO LIABILITY FOR  
VARIATIONS, IF ANY, WITH AN ACTUAL SURVEY.



1-78A-1  
PRESTON C JR &  
CATHY ANN  
ANDERSON  
0.35 Ac.

1-78A-10  
ROBERT K &  
DARLA S  
DURFEY  
0.09 Ac.

300 NORTH

200 WEST

1-78A-15  
DEREK  
JON  
BEAGLEY  
9.30 Ac.

1-78A-5  
PRESTON C JR &  
CATHY ANN  
ANDERSON  
3.16 Ac.

1-78A-4  
JARED PARKINSON  
1.50 Ac.

1-78A-3  
JARED G  
PARKINSON  
3.75 Ac.

1-78A-7  
PHILLIP E & KIRBY WELLS  
ANDERSON  
0.82 Ac.

1-78A-16  
PRESTON C JR & CATHY ANN  
ANDERSON  
1.00 Ac.

1-78A-8  
MAURINE C HATFIELD  
1.00 Ac.

1-78A-9  
ROBERT K & DARLA S  
DURFEY  
0.59 Ac.

1-78A-2  
LEW &  
KIMBERLY LARSON  
0.43 Ac.

1-78A-11  
LEWIS R &  
KIMBERLY K  
LARSON  
1.53 Ac.

1-78A-13  
DEREK  
BEAGLEY  
5.00 Ac.

1-78A-14  
LOUIS J &  
VAL JO  
SANSEVERO  
0.5 Ac.

1-78A-17  
DEREK JON  
BEAGLEY  
0.34 Ac.

200 NORTH

100 NORTH

1-78A  
04-22S-06E