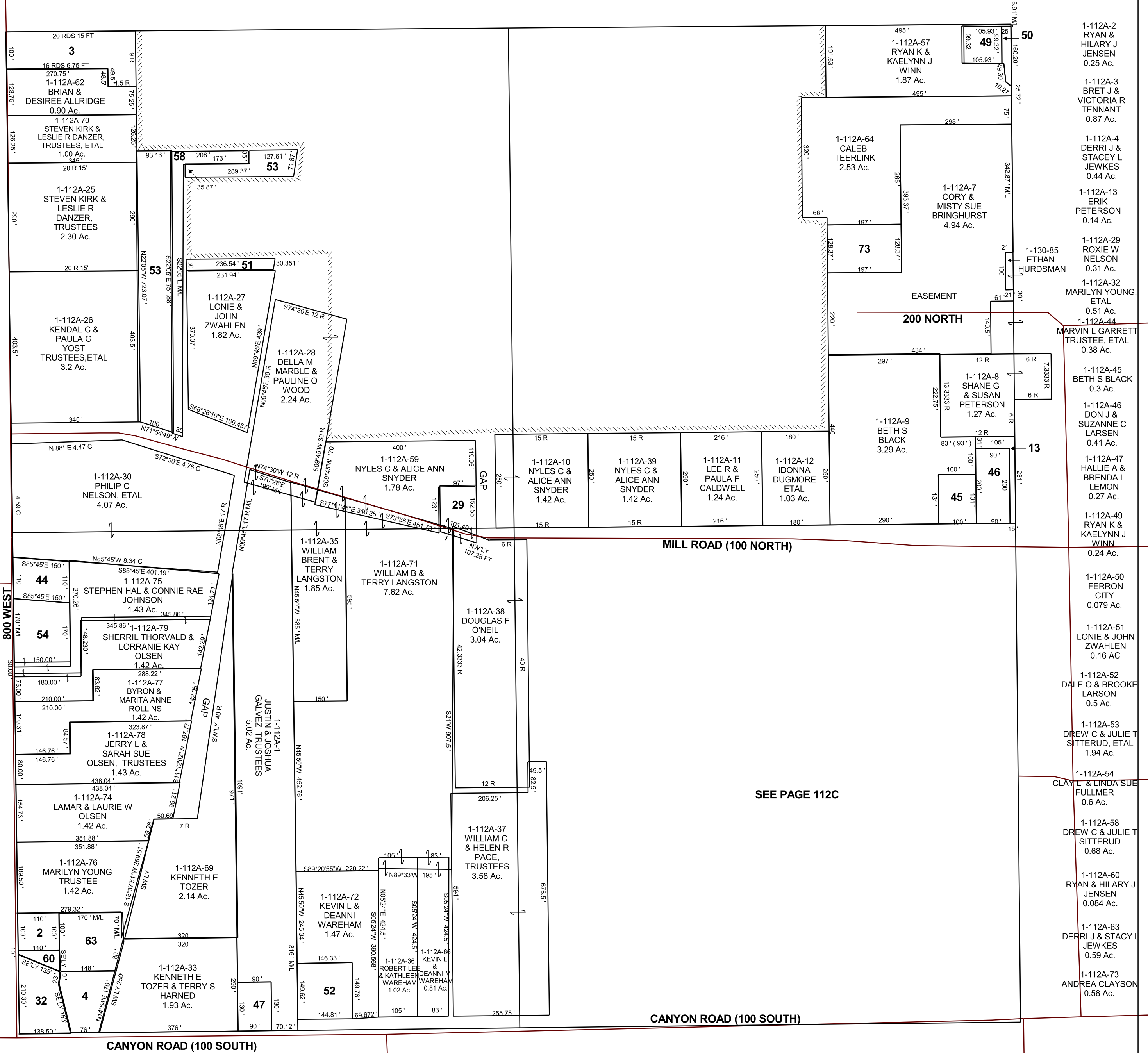


FERRON

SW/4 SECTION 9, T 20 S, R 07 E S.L.B. & M.

THIS PLAT IS MADE SOLELY FOR THE PURPOSE OF ASSISTING IN LOCATING THE LAND, AND THE RECORDER ASSUMES NO LIABILITY FOR VARIATIONS, IF ANY, WITH AN ACTUAL SURVEY.



SEE PAGE 112C

- 1-112A-2 RYAN & HILARY J JENSEN 0.25 Ac.
- 1-112A-3 BRET J & VICTORIA R TENNANT 0.87 Ac.
- 1-112A-4 DERRI J & STACEY L JEWKES 0.44 Ac.
- 1-112A-13 ERIK PETERSON 0.14 Ac.
- 1-112A-29 ROXIE W NELSON 0.31 Ac.
- 1-112A-32 MARILYN YOUNG, ETAL 0.51 Ac.
- 1-112A-44 MARVIN L GARRETT TRUSTEE, ETAL 0.38 Ac.
- 1-112A-45 BETH S BLACK 0.3 Ac.
- 1-112A-46 DON J & SUZANNE C LARSEN 0.41 Ac.
- 1-112A-47 HALLIE A & BRENDA L LEMON 0.27 Ac.
- 1-112A-49 RYAN K & KAELYNN J WINN 0.24 Ac.
- 1-112A-50 FERRON CITY 0.079 Ac.
- 1-112A-51 LONIE & JOHN ZWAHLEN 0.16 AC
- 1-112A-52 DALE O & BROOKE LARSON 0.5 Ac.
- 1-112A-53 DREW C & JULIE T SITTERUD, ETAL 1.94 Ac.
- 1-112A-54 CLAY L & LINDA SUE FULLMER 0.6 Ac.
- 1-112A-58 DREW C & JULIE T SITTERUD 0.68 Ac.
- 1-112A-60 RYAN & HILARY J JENSEN 0.084 Ac.
- 1-112A-63 DERRI J & STACY L JEWKES 0.59 Ac.
- 1-112A-73 ANDREA CLAYSON 0.58 Ac.