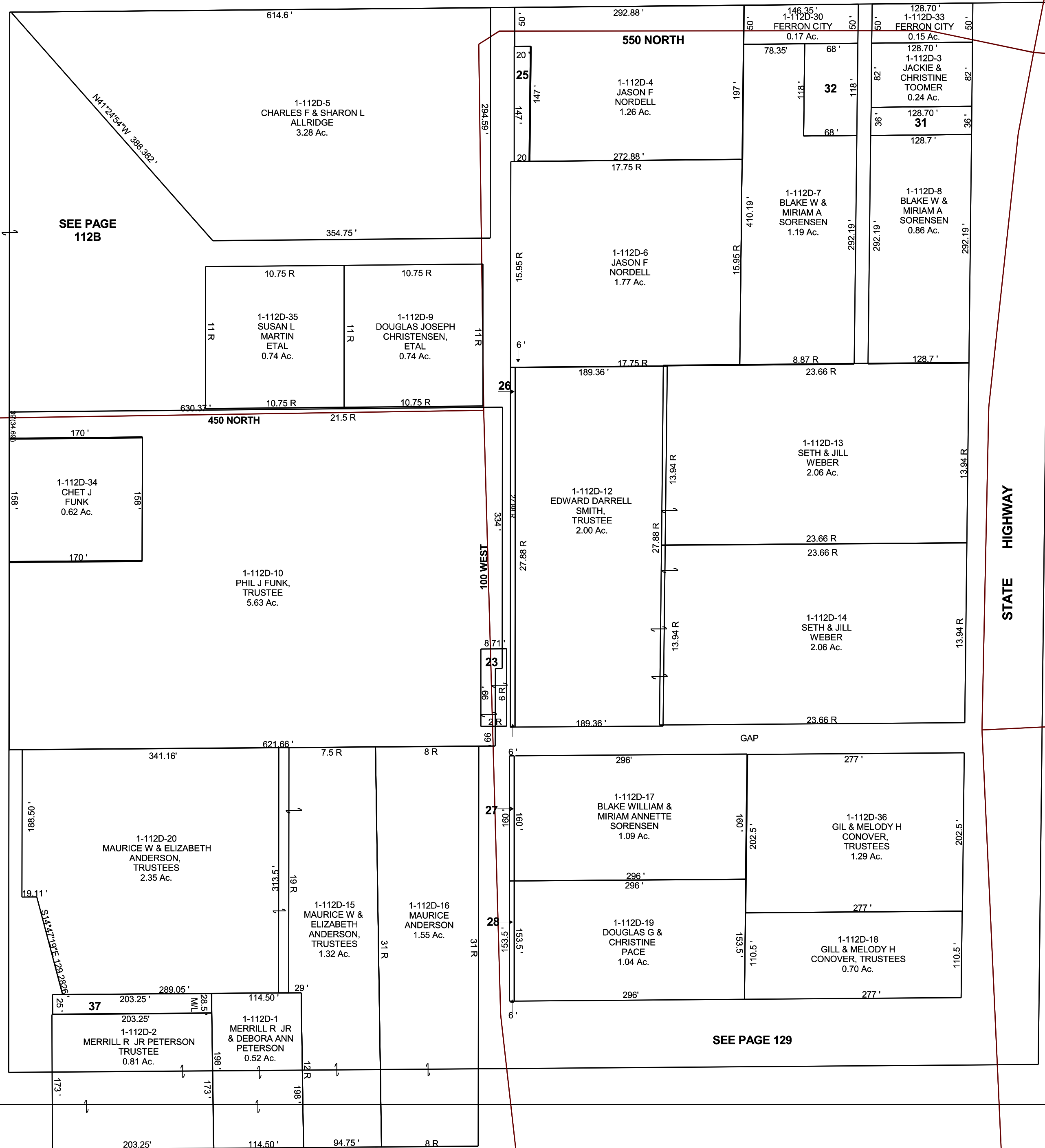


FERRON

SE/4 NE/4 SECTION 9, T 20 S, R 07 E S.L.B. & M.

BOOK 1 PAGE 112D
SCALE: 1" = 100'
OCTOBER 10, 2017

THIS PLAT IS MADE SOLELY FOR THE PURPOSE
OF ASSISTING IN LOCATING THE LAND, AND
THE RECORDER ASSUMES NO LIABILITY FOR
VARIATIONS, IF ANY, WITH AN ACTUAL SURVEY.



- 1-112D-23 EMERY COUNTY 0.075 Ac.
- 1-112D-25 FERRON CITY 0.067 Ac.
- 1-112D-26 FERRON CITY 0.063 Ac.
- 1-112D-27 FERRON CITY 0.022 Ac.
- 1-112D-28 FERRON CITY 0.021 Ac.
- 1-112D-31 JACKIE LEE & CHRISTINE TOOMER 0.11 Ac.
- 1-112D-32 JACKIE LEE & CHRISTINE TOOMER 0.18 Ac.
- 1-112D-37 MERRILL R JR & DEBORA ANN PETERSON 0.12 Ac.

1-112D
9-20S-07E