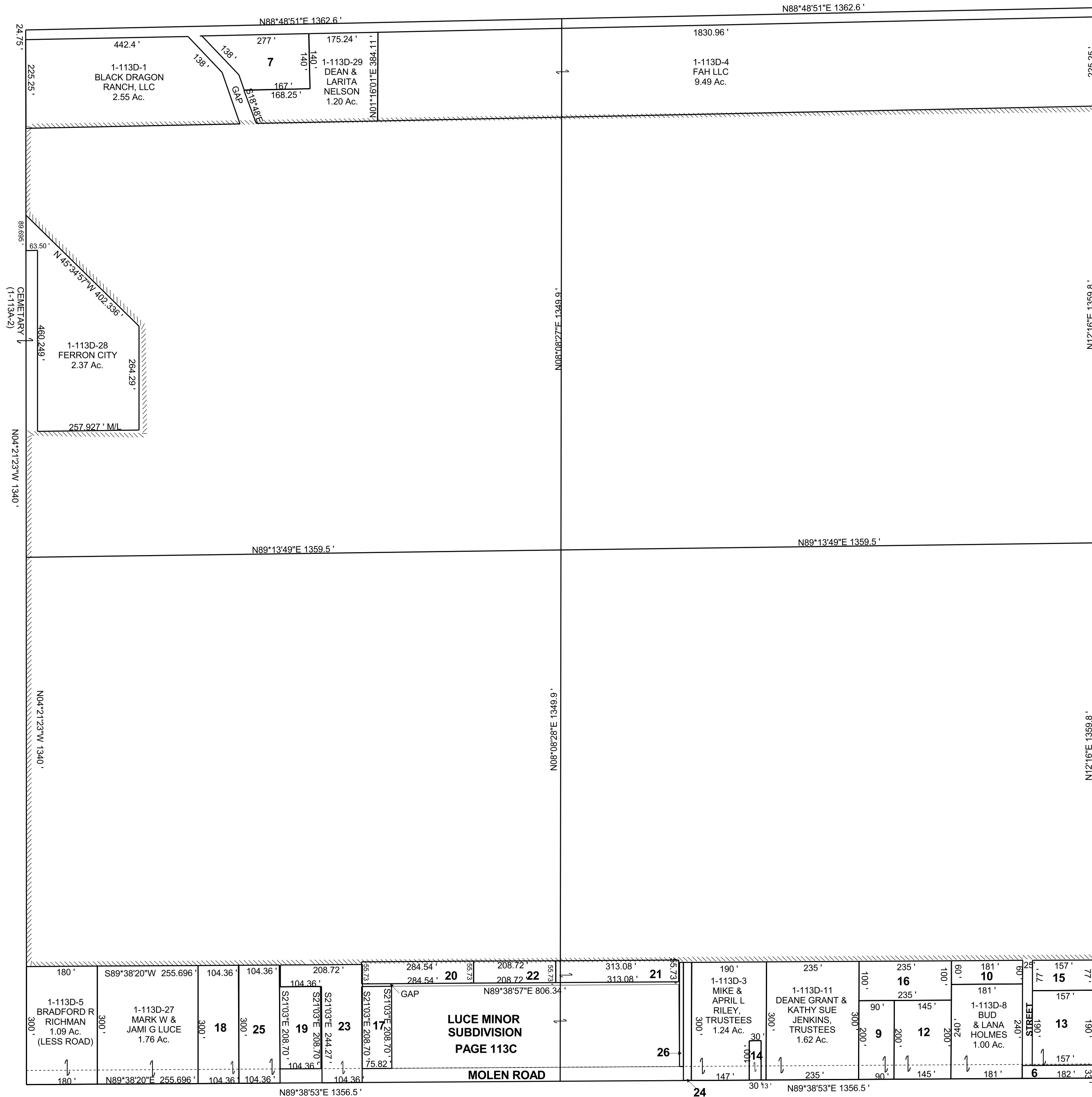


FERRON

BOOK 1 PAGE 113D  
SCALE: 1" = 200'  
OCTOBER 31, 2018

SE/4 SECTION 10, T 20 S, R 07 E S.L.B. & M.

THIS PLAT IS MADE SOLELY FOR THE PURPOSE  
OF ASSISTING IN LOCATING THE LAND, AND  
THE RECORDER ASSUMES NO LIABILITY FOR  
VARIATIONS, IF ANY, WITH AN ACTUAL SURVEY.



- 1-113D-6  
FERRON CITY  
0.14 Ac.
- 1-113D-7  
DEAN & LARITA  
NELSON  
TRUSTEES  
0.69 Ac.
- 1-113D-9  
TED D &  
LARENA A  
SWASEY,  
CO-TRUSTEES  
0.41 Ac.
- 1-113D-10  
RUSSELL S &  
JODI A  
WILLSON  
0.25 Ac.
- 1-113D-12  
TED D &  
LARENA A  
SWASEY,  
CO-TRUSTEES  
0.67 Ac.
- 1-113D-13  
BENJAMIN E &  
ASHLEY M  
GRANT  
0.68 Ac.
- 1-113D-14  
QUESTAR  
PIPELINE  
COMPANY  
0.069 Ac.
- 1-113D-15  
WAYNE L &  
PAULA  
KUNZE  
0.28 Ac.
- 1-113D-16  
TED D &  
LARENA A  
SWASEY,  
CO-TRUSTEES  
0.54 Ac.
- 1-113D-17  
WILLIAM DOUG &  
PEGGY  
WRIGHT  
0.36 Ac.
- 1-113D-18  
COLLIN & ALEXIS  
WORWOOD  
0.72 Ac.
- 1-113D-19  
MONTE M MOWER  
0.50 Ac.
- 1-113D-20  
DARLINE B  
DEBRY  
0.36 Ac.
- 1-113D-21  
SAM E  
WILBANKS  
TRUSTEE, ETAL  
0.40 Ac.
- 1-113D-22  
JACEN B &  
ANNETTE JEX  
BENSON  
0.27 Ac.
- 1-113D-23  
WILLIAM DOUG &  
PEGGY  
WRIGHT  
0.84 Ac.
- 1-113D-24  
BLACK DRAGON  
RANCH, LLC  
0.14 Ac.
- 1-113D-25  
BENJAMIN  
WOLFORD  
0.72 Ac.
- 1-113D-26  
SAM E & VICKIE L  
WILBANKS  
TRUSTEES, ETAL  
0.06 Ac.