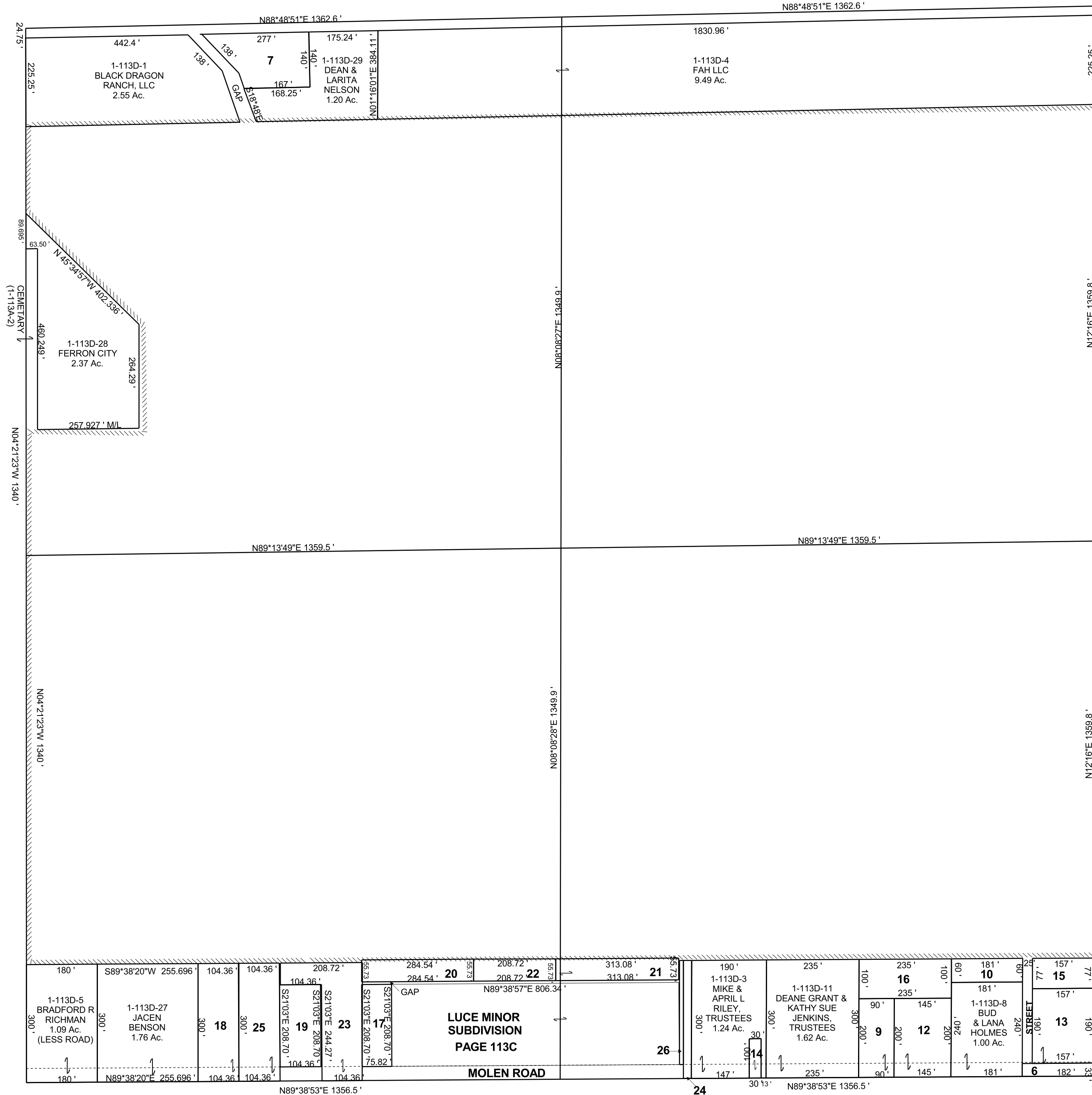


FERRON

BOOK 1 PAGE 113D
SCALE: 1" = 200'
NOVEMBER 21, 2018

SE/4 SECTION 10, T 20 S, R 07 E S.L.B. & M.

THIS PLAT IS MADE SOLELY FOR THE PURPOSE
OF ASSISTING IN LOCATING THE LAND, AND
THE RECORDER ASSUMES NO LIABILITY FOR
VARIATIONS, IF ANY, WITH AN ACTUAL SURVEY.



- 1-113D-6
FERRON CITY
0.14 Ac.
- 1-113D-7
DEAN & LARITA
NELSON,
TRUSTEES
0.69 Ac.
- 1-113D-9
TED D &
LARENA A
SWASEY,
CO-TRUSTEES
0.41 Ac.
- 1-113D-10
RUSSELL S &
JODI A
WILLSON
0.25 Ac.
- 1-113D-12
TED D &
LARENA A
SWASEY,
CO-TRUSTEES
0.67 Ac.
- 1-113D-13
BENJAMIN E &
ASHLEY M
GRANT
0.68 Ac.
- 1-113D-14
QUESTAR
PIPELINE
COMPANY
0.069 Ac.
- 1-113D-15
WAYNE L &
PAULA
KUNZE
0.28 Ac.
- 1-113D-16
TED D &
LARENA A
SWASEY,
CO-TRUSTEES
0.54 Ac.
- 1-113D-17
WILLIAM DOUG &
PEGGY
WRIGHT
0.36 Ac.
- 1-113D-18
COLLIN & ALEXIS
WORWOOD
0.72 Ac.
- 1-113D-19
MONTE M MOWER
0.50 Ac.
- 1-113D-20
DARLINE B
DEBRY
0.36 Ac.
- 1-113D-21
SAM E
WILBANKS
TRUSTEE, ETAL
0.40 Ac.
- 1-113D-22
JACEN B &
ANNETTE JEX
BENSON
0.27 Ac.
- 1-113D-23
WILLIAM DOUG &
PEGGY
WRIGHT
0.84 Ac.
- 1-113D-24
BLACK DRAGON
RANCH, LLC
0.14 Ac.
- 1-113D-25
BENJAMIN
WOLFORD
0.72 Ac.
- 1-113D-26
SAM E & VICKIE L
WILBANKS
TRUSTEES, ETAL
0.06 Ac.