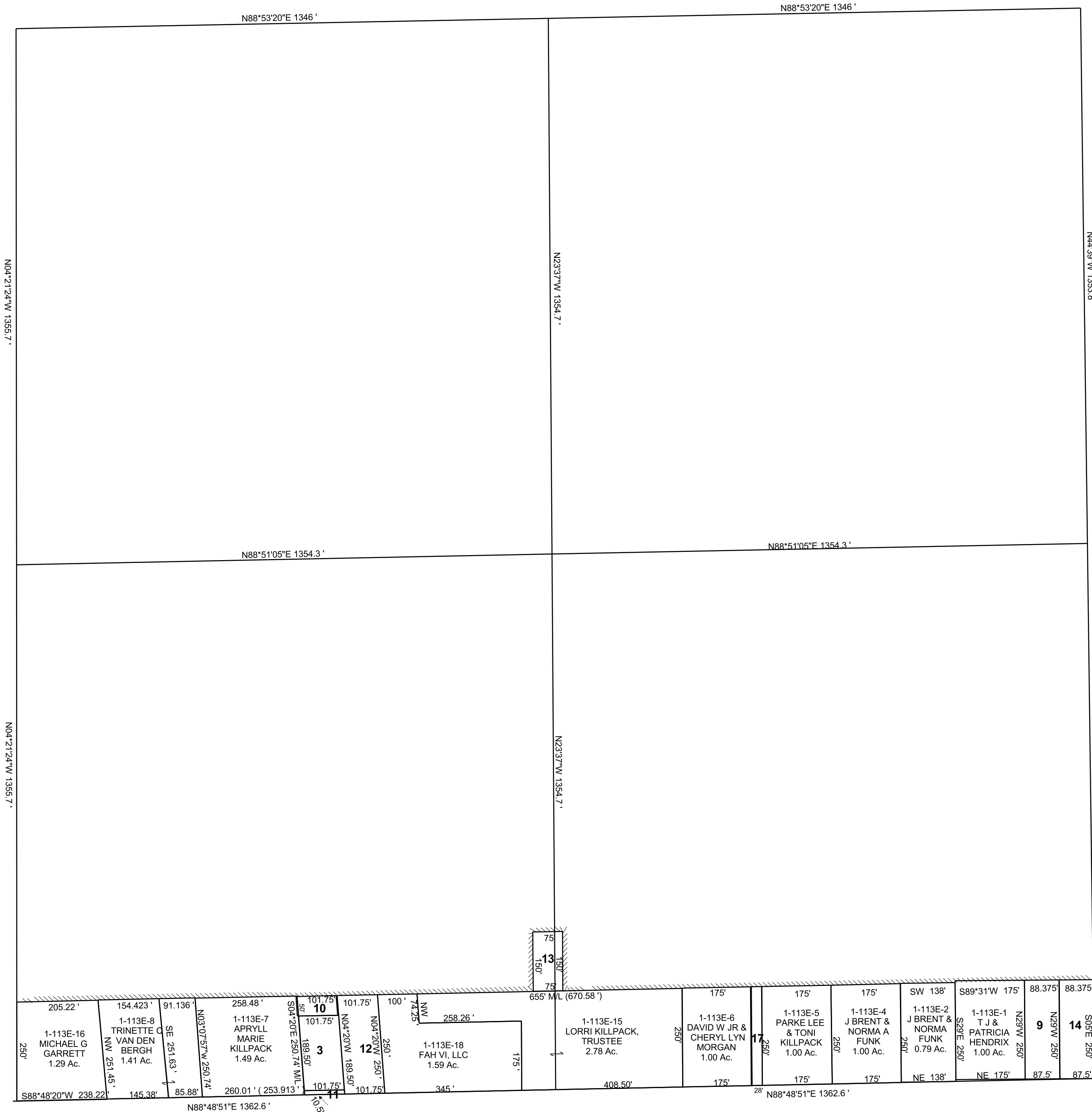


FERRON

NE/4 SECTION 10, T 20 S, R 07 E S.L.B. & M.

THIS PLAT IS MADE SOLELY FOR THE PURPOSE  
OF ASSISTING IN LOCATING THE LAND, AND  
THE RECORDER ASSUMES NO LIABILITY FOR  
VARIATIONS, IF ANY, WITH AN ACTUAL SURVEY.



- 1-113E-3  
MERRILL B  
& SANDRA M  
JEWKES  
0.44 Ac.
- 1-113E-9  
CAROLYN M  
PARRISH,  
TRUSTEE  
0.51 Ac.
- 1-113E-10  
MERRIL OR  
SANDRA JEWKES,  
ETAL  
0.12 Ac.
- 1-113E-11  
FERRON  
CITY  
0.02 Ac.
- 1-113E-12  
MERRILL  
& SANDRA  
JEWKES  
0.58 Ac.
- 1-113E-13  
LORRI  
KILLPACK,  
TRUSTEE  
0.26 Ac.
- 1-113E-14  
KATHLEEN  
UNDERWOOD  
0.50 Ac.
- 1-113E-17  
FAH VI, LLC  
0.16 Ac.

N44°39'W 1353.8'

N44°39'W 1353.8'