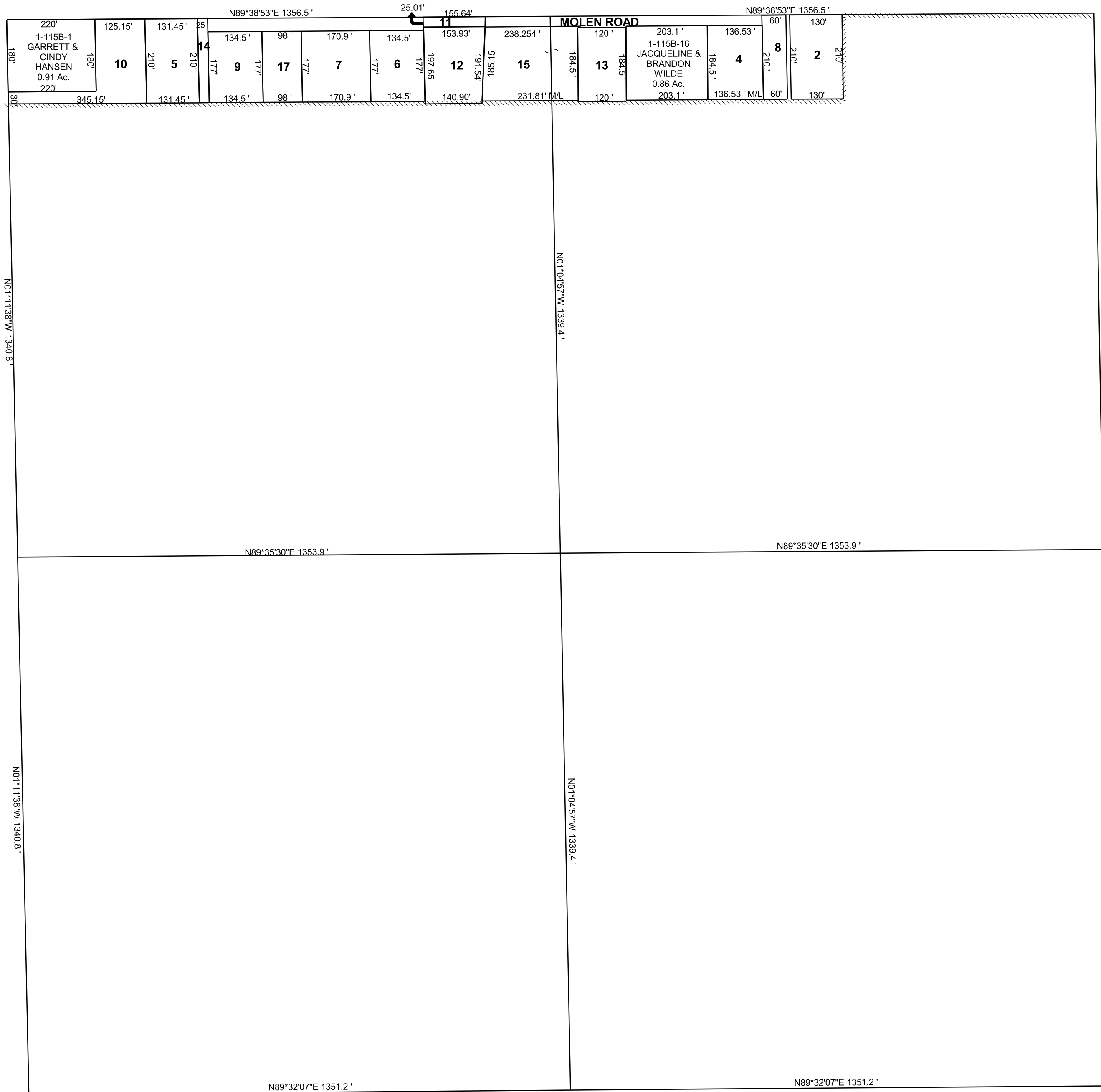


FERRON

NE/4 SECTION 15, T 20 S, R 07 E S.L.B. & M.

BOOK 1 PAGE 115B
SCALE: 1" = 200'
AUGUST 3, 2022

THIS PLAT IS MADE SOLELY FOR THE PURPOSE
OF ASSISTING IN LOCATING THE LAND, AND
THE RECORDER ASSUMES NO LIABILITY FOR
VARIATIONS, IF ANY, WITH AN ACTUAL SURVEY.



- 1-115B-2
KENT &
BARBARA
MCKELL
0.63 Ac.
- 1-115B-4
RICKY LAVAR
& KATHY LEE
WILDE,
TRUSTEES
0.59 Ac.
- 1-115B-5
GIL & HEIDI W
BOWDEN,
TRUSTEES
ETAL
0.63 Ac.
- 1-115B-6
MONT E & JULIE
JOHNSON
0.55 Ac.
- 1-115B-7
WILLIAM A
MCGEE
1.09 Ac.
- 1-115B-8
BLACK DRAGON
RANCH, LLC
0.29 Ac.
- 1-115B-9
RUSSELL SCOTT &
JODI ANN
WILLSON
0.55 Ac.
- 1-115B-10
KENT B &
BARBARA B
MCKELL
0.75 Ac.
- 1-115B-11
EMERY
COUNTY
0.09 Ac.
- 1-115B-12
SIDNEY L &
SHERRIE L
SWASEY
TRUSTEES
0.65 Ac.
- 1-115B-13
CLIVE W &
MELINDA S
GORDON
0.51 Ac.
- 1-115B-14
GIL & HEIDI W
BOWDEN,
TRUSTEES
ETAL
0.12 Ac.
- 1-115B-15
RONNY J
& LEIGH M
BLOOMER
1.00 Ac.
- 1-115B-17
RUSSELL SCOTT &
JODI ANN
WILLSON
0.40 Ac.