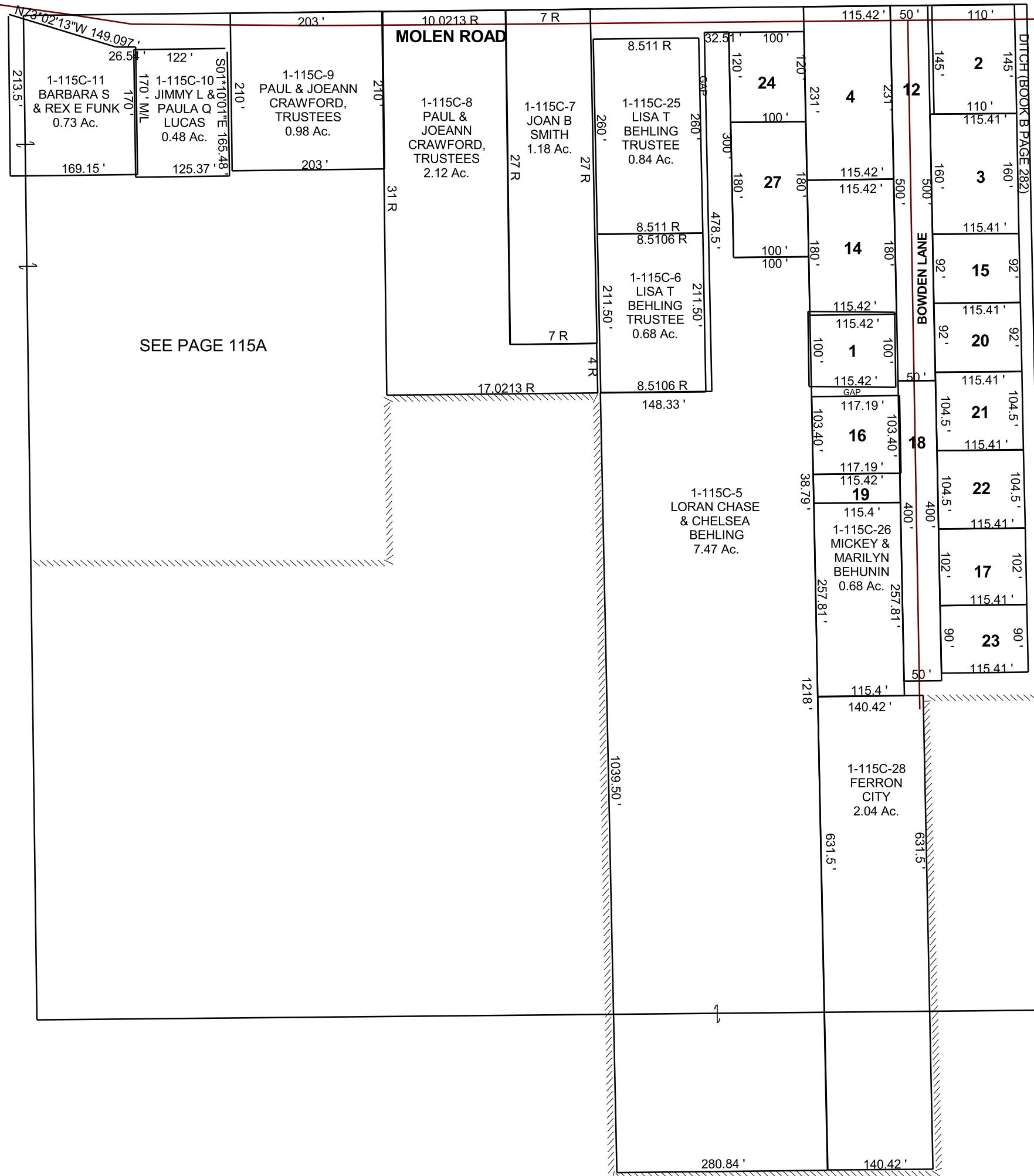


FERRON

NE/4 NW/4 SECTION 15, T 20 S, R 07 E S.L.B. & M.

THIS PLAT IS MADE SOLELY FOR THE PURPOSE OF ASSISTING IN LOCATING THE LAND, AND THE RECORDER ASSUMES NO LIABILITY FOR VARIATIONS, IF ANY, WITH AN ACTUAL SURVEY.



- | | |
|--|---|
| 1-115C-1
JONATHAN &
TRISHA
HUNT
0.26 Ac. | 1-115C-22
BRYAN P &
ROSEANN F
FOX
0.28 Ac. |
| 1-115C-2
JUSTUS T
JORGENSEN
0.37 Ac. | 1-115C-12
FERRON
CITY
0.57 Ac. |
| 1-115C-3
LARRY DON
& PAULA R
HUNSAKER
0.42 Ac. | 1-115C-18
FERRON
CITY
0.46 Ac. |
| 1-115C-4
FEDERAL
NATIONAL
MORTGAGE
ASSOCIATION
0.61 Ac. | 1-115C-19
MICKEY &
MARILYN
BEHUNIN
0.10 Ac. |
| 1-115C-14
HUGH &
KOLLEEN
CHRISTIANSEN
0.48 Ac. | 1-115C-20
SECRETARY OF
HOUSING & URBAN
DEVELOPMENT
0.24 Ac. |
| 1-115C-15
GEOFFREY
& HOLLIE
SMITH
0.24 Ac. | 1-115C-23
RODNEY W
& RAELEEN
SWASEY
0.24 Ac. |
| 1-115C-16
MICKEY J &
MARILYN
BEHUNIN
0.28 Ac. | 1-115C-24
BRADLEY J &
STEPHANIE
TIMOTHY
0.28 Ac. |
| 1-115C-17
MICHAEL
SUMMERS
0.27 Ac. | 1-115C-27
BRADLEY J &
STEPHANIE
TIMOTHY
0.41 Ac. |
| 1-115C-21
JEFFREY G
& BRENDA B
THOMAS
0.28 Ac. | |