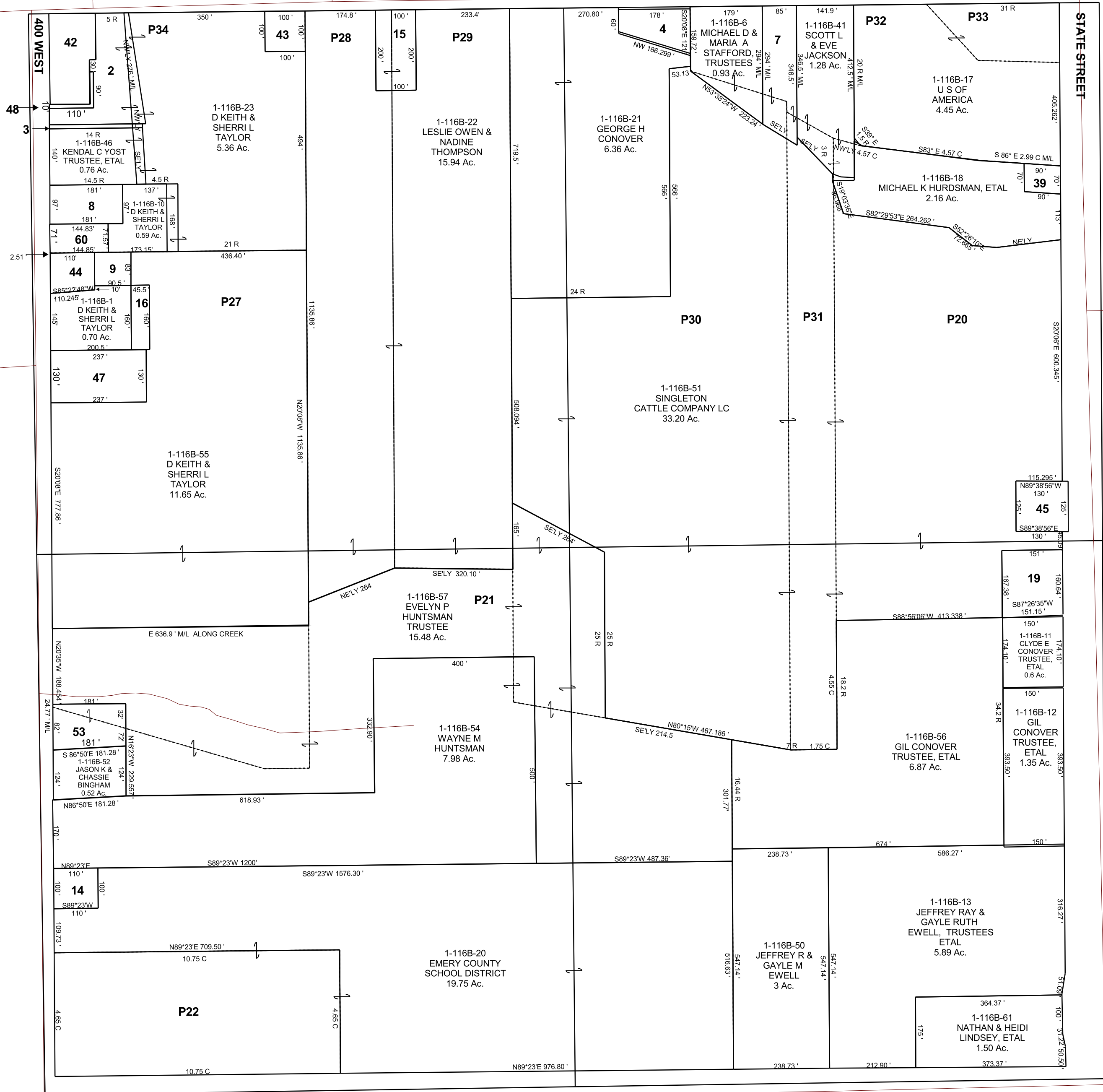


FERRON  
NE/4 SECTION 16, T 20 S, R 07 E S.L.B. & M

BOOK 1 PAGE 116B  
SCALE: 1" = 200'  
SEPTEMBER 28, 2017

THIS PLAT IS MADE SOLELY FOR THE PURPOSE  
OF ASSISTING IN LOCATING THE LAND, AND  
THE RECORDER ASSUMES NO LIABILITY FOR  
VARIATIONS, IF ANY, WITH AN ACTUAL SURVEY.



- 1-116B-2  
ETHAN T &  
HEIDI  
CONOVER  
MIGLIORI  
0.78 AC
- 1-116B-3  
CURTIS WAYNE  
STEELE, ETAL  
0.053 AC
- 1-116B-4  
SCOTT A  
BARNEY  
0.36 AC
- 1-116B-7  
SCOTT L &  
EVE JACKSON  
0.62 AC
- 1-116B-8  
TODD &  
BRENDA ANN  
PETERSEN  
0.40 AC
- 1-116B-9  
D KEITH &  
SHERRI L  
TAYLOR  
0.17 AC
- 1-116B-14  
CHURCH OF JESUS  
CHRIST OF LDS  
0.25 AC
- 1-116B-15  
DORIS  
WALKER  
0.46 AC
- 1-116B-16  
D KEITH &  
SHERRI L  
TAYLOR  
0.17 AC
- 1-116B-19  
ALTA B  
SINGLETON  
TRUSTEE, ETAL  
0.57 AC
- 1-116B-39  
MICHAEL K  
HURDSMAN,  
ETAL  
0.14 AC
- 1-116B-42  
JAMES B &  
JUNE L  
LEDGER  
0.56 AC
- 1-116B-43  
D KEITH &  
SHERRI L  
TAYLOR  
0.23 AC
- 1-116B-44  
D KEITH &  
SHERRI L  
TAYLOR  
0.23 AC
- 1-116B-45  
WAYNE &  
TRACIE S URIE  
0.37 AC
- 1-116B-47  
JAMES S &  
SANDRA S BEHLING  
0.71 AC
- 1-116B-48  
ETHAN T &  
HEIDI  
CONOVER  
MIGLIORI  
0.044 AC
- 1-116B-53  
DAINE &  
STEPHANIE  
BEHLING  
0.45 AC
- 1-116B-60  
MICHAEL B &  
SHIRLEY  
JACOBSEN  
0.24 AC

1-116B  
19-20S-07E

500 SOUTH