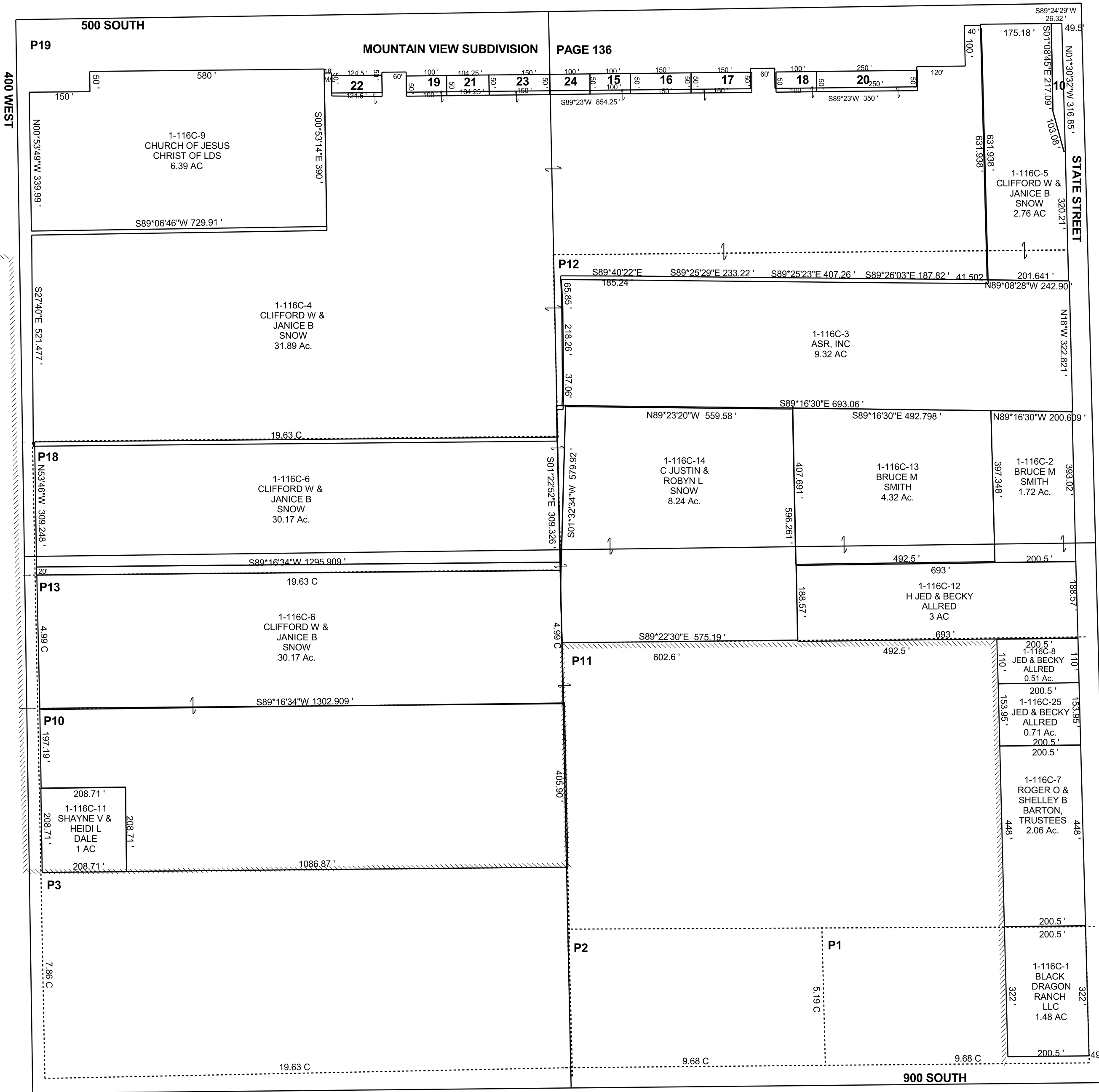


FERRON

SE/4 SECTION 16, T 20 S, R 07 E S.L.B. & M.

BOOK 1 PAGE 116C
SCALE: 1" = 200'
MARCH 27, 2018

THIS PLAT IS MADE SOLELY FOR THE PURPOSE
OF ASSISTING IN LOCATING THE LAND, AND
THE RECORDER ASSUMES NO LIABILITY FOR
VARIATIONS, IF ANY, WITH AN ACTUAL SURVEY.



- 1-116C-10
UTAH
DEPARTMENT OF
TRANSPORTATION
0.17 Ac.
- 1-116c-15
JOHN T &
LINDA D ELLIS
0.11 Ac.
- 1-116C-16
ROBERT EARL &
DEBORAH LYNN
BLACKBURN
0.17 Ac.
- 1-116C-17
G LANE &
MARLENE B
CHYNOWETH
0.17 Ac.
- 1-116C-18
CRYSTAL ALVARADO &
RONALD A ELLIS
0.11 Ac.
- 1-116C-19
LARRY D &
ANNETTE W
SALING
0.11 Ac.
- 1-116C-20
GREGORY J &
GLENDA D GUEST
0.29 Ac.
- 1-116C-21
MESIA NYMAN
0.12 Ac.
- 1-116C-22
JERRY L &
SADIE TOINETTE
THOMAS
0.15 Ac.
- 1-116C-23
ETHAN T &
HEIDI MIGLIORI
0.17 Ac.
- 1-116c-24
BRETT
BEHLING
0.11 Ac.

1-116C
16-20S-07E