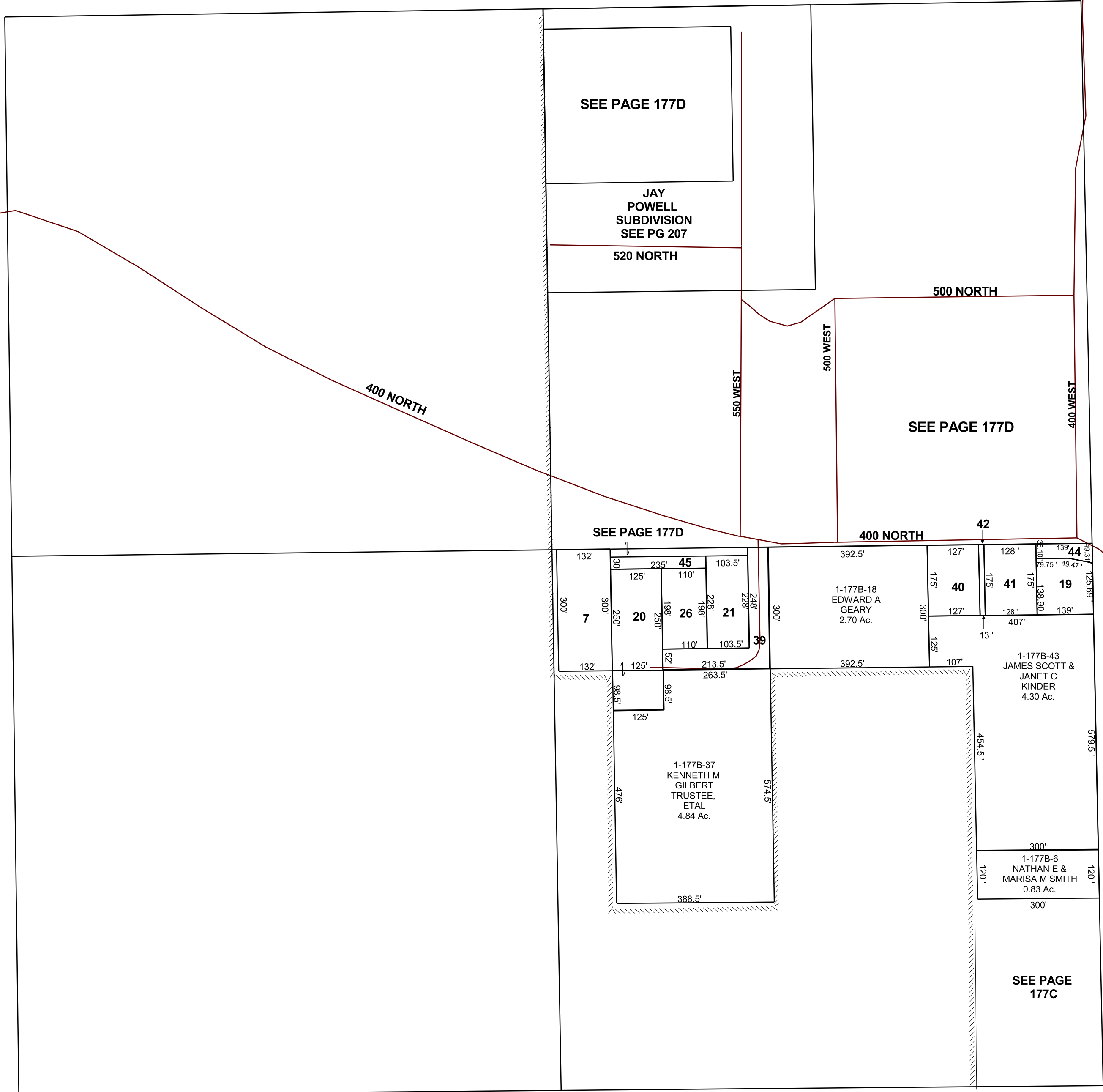


HUNTINGTON

NW/4 SECTION 24, T 17 S, R 08 E S.L.B. & M.

BOOK 1 PAGE 177B
SCALE: 1" = 200'
OCTOBER 26, 2018

THIS PLAT IS MADE SOLELY FOR THE PURPOSE
OF ASSISTING IN LOCATING THE LAND, AND
THE RECORDER ASSUMES NO LIABILITY FOR
VARIATIONS, IF ANY, WITH AN ACTUAL SURVEY.



- 1-177B-7
DANNY LEE
JOHNSON
TRUSTEE, ETAL
0.91 Ac.
- 1-177B-20
RON A &
RAELENE
TERWILLEGGER
1.00 Ac.
- 1-177B-19
PATRICIA ANN
KINDER SWEET
0.44 Ac.
- 1-177B-21
JANELLA L MANN
& KIRT A
RASMUSSEN
0.54 Ac.
- 1-177B-26
DALE R &
WENDY BLACK
0.5 Ac.
- 1-177B-39
HUNTINGTON
CITY
0.6 Ac.
- 1-177B-40
J SCOTT & JANET
KINDER
0.51 Ac.
- 1-177B-41
KAMIE KINDER &
BRANDON GILL
CONOVER
0.51 Ac.
- 1-177B-42
J SCOTT &
JANET C KINDER
0.05 Ac.
- 1-177B-44
HUNTINGTON
CITY
0.12 Ac.
- 1-177B-45
KENNETH M
& CONNIE M
GILBERT
0.16 Ac.

1-177B
24-17S-08E