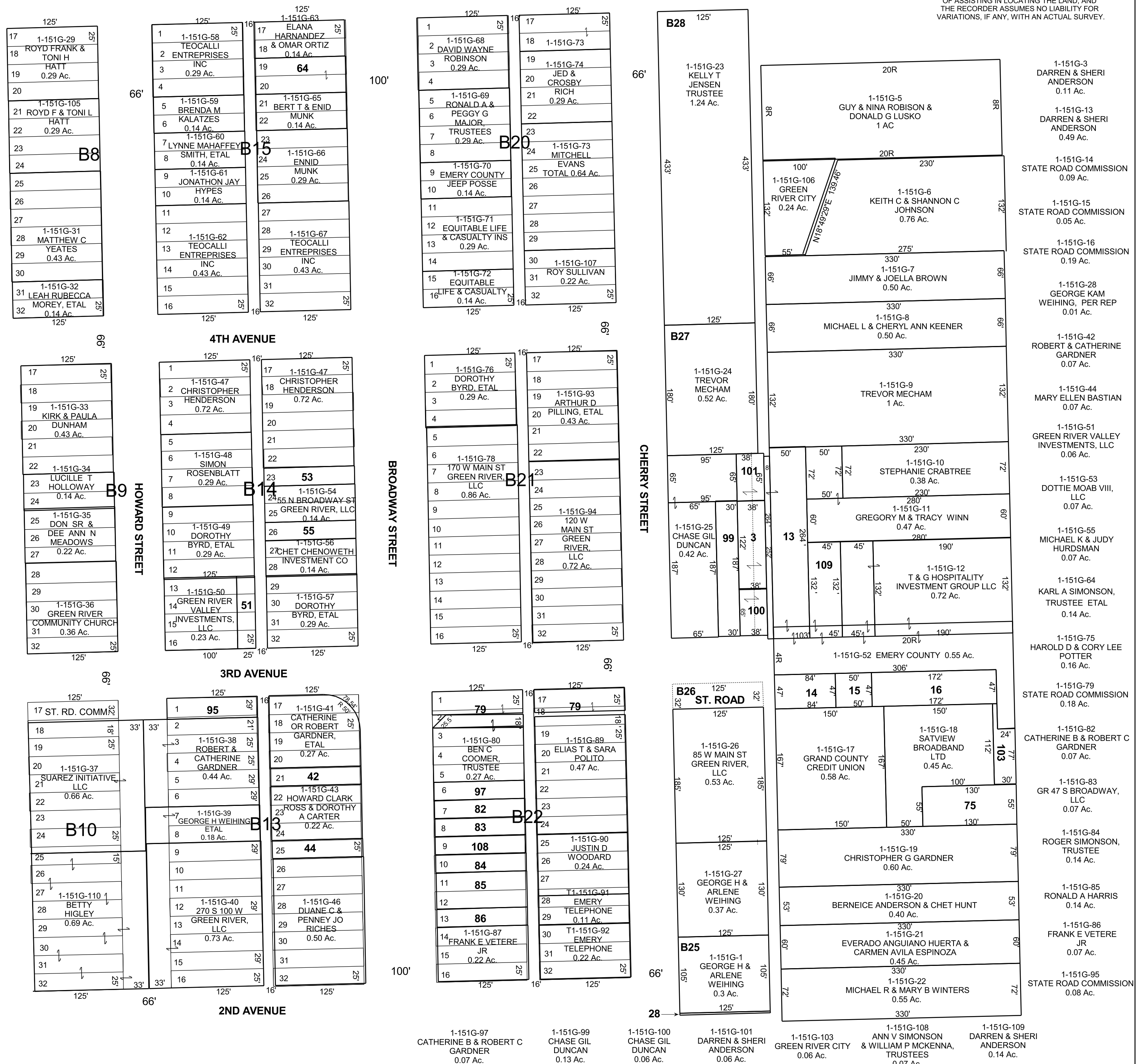


FIRST DIVISION OF GREEN RIVER TOWNSITE  
SE/4 SW/4 SECTION 9, T 21 S, R 16 E S.L.B. & M.

BOOK 1 PAGE 151G  
SCALE: 1" = 100'  
AUGUST 9, 2022

THIS PLAT IS MADE SOLELY FOR THE PURPOSE OF ASSISTING IN LOCATING THE LAND, AND THE RECORDER ASSUMES NO LIABILITY FOR VARIATIONS, IF ANY, WITH AN ACTUAL SURVEY.



1-151G-97 CATHERINE B & ROBERT C GARDNER 0.07 Ac.  
1-151G-99 CHASE GIL DUNCAN 0.13 Ac.  
1-151G-100 CHASE GIL DUNCAN 0.06 Ac.  
1-151G-101 DARREN & SHERI ANDERSON 0.06 Ac.  
1-151G-103 GREEN RIVER CITY 0.06 Ac.  
1-151G-108 ANN V SIMONSON & WILLIAM P MCKENNA, TRUSTEES 0.07 Ac.  
1-151G-109 DARREN & SHERI ANDERSON 0.14 Ac.

1-151G  
9-21S-16E