

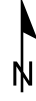
GREEN RIVER

SECTION 13, T 21 S, R 16 E S.L.B. & M.

BOOK 1 PAGE 153B
SCALE: 1" = 400'
FEBRUARY 20, 2019

EX

THIS PLAT IS MADE SOLELY FOR THE PURPOSE
OF ASSISTING IN LOCATING THE LAND, AND
THE RECORDER ASSUMES NO LIABILITY FOR
VARIATIONS, IF ANY, WITH AN ACTUAL SURVEY.



1-153B-5
GREEN RIVER
COMPANIES, LLC
81.55 Ac.
(8-13-140)

1-153B-8
GREG VETERE
40.47 Ac.
(8-13-180)

1-153B-9
U S OF
AMERICA
40.43 Ac.

1-153B-1
OLIVE S
ANDERSON, TRUSTEE
ETAL
122.32 Ac.
(8-13-136)

1-153B-6
CACTUS FLATS
RESOURCES, LLC
40.69 Ac.
(8-13-141)

1-153B-4
GREEN
RIVER CITY
73.83 Ac.
(8-13-139)

1-153B-7
J R &
SHARON
SCOTT
8.50 Ac.
(8-13-163)

1-153B-10
LYMAN
FAMILY
FARM,
INC
40.42 Ac.

1-153B-3
GREEN RIVER LENDERS LLC
35.19 Ac.
(LESS RR & HWY R/W)
(8-13-138)

1-153B-2
GREEN
RIVER CITY
80.90 Ac.
(8-13-137)

GRAND COUNTY

OLD HWY 6 & 50