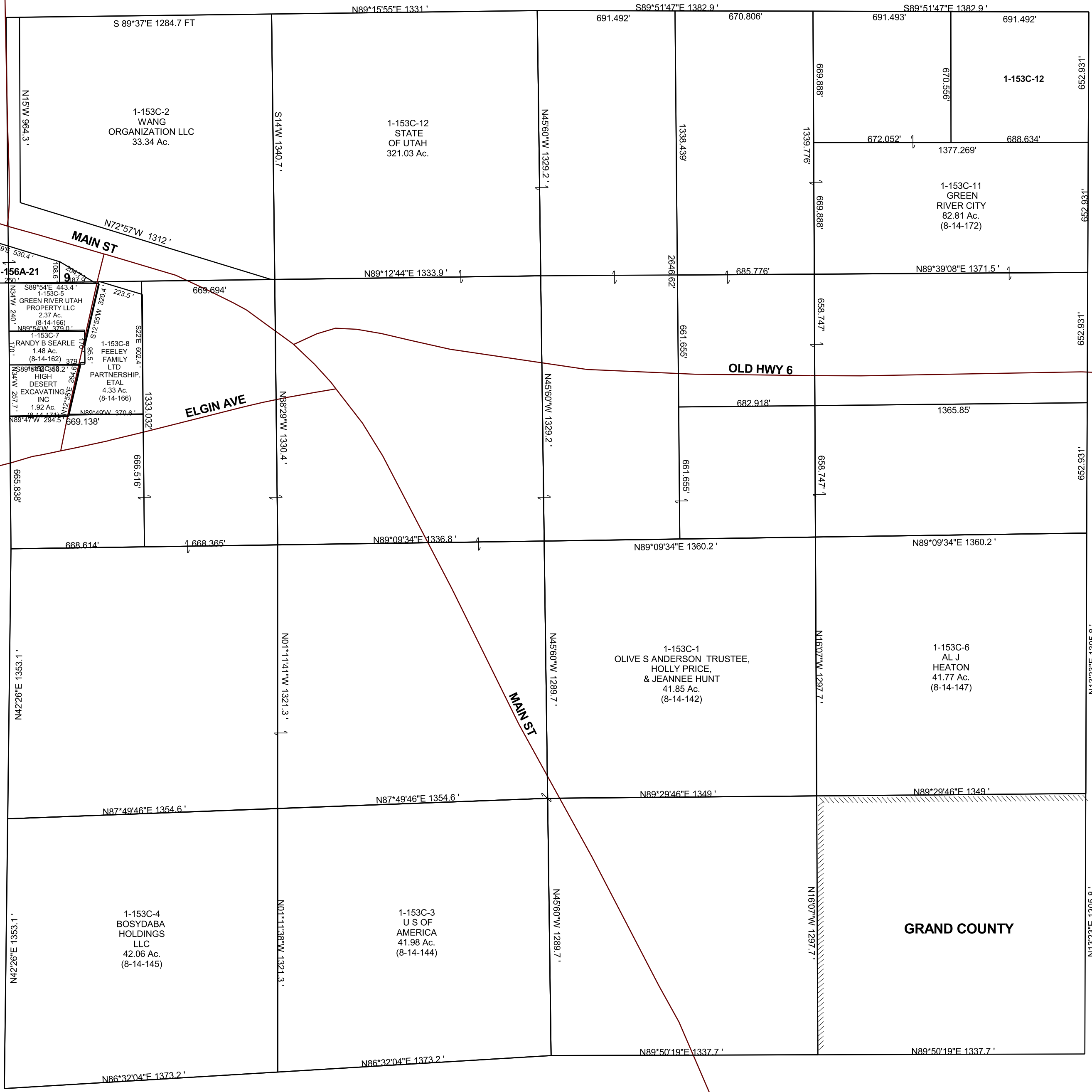


GREEN RIVER

SECTION 14, T 21 S, R 16 E S.L.B. & M.

BOOK 1 PAGE 153C
SCALE: 1" = 400'
AUGUST 22, 2022

THIS PLAT IS MADE SOLELY FOR THE PURPOSE
OF ASSISTING IN LOCATING THE LAND, AND
THE RECORDER ASSUMES NO LIABILITY FOR
VARIATIONS, IF ANY, WITH AN ACTUAL SURVEY.



1-153C-9
GREEN RIVER
UTAH
PROPERTY
LLC
0.23 Ac.
(8-14-168)

1-156A-21
MICHAEL R
GARSIDE
TRUSTEE,
ETAL
2.15 Ac.
(8-15-169)
SEE SEC 15

1-153C-2
WANG
ORGANIZATION LLC
33.34 Ac.

1-153C-12
STATE
OF UTAH
321.03 Ac.

1-153C-11
GREEN
RIVER CITY
82.81 Ac.
(8-14-172)

1-153C-12

1-153C-5
GREEN RIVER UTAH
PROPERTY LLC
2.37 Ac.
(8-14-166)

1-153C-7
RANDY B SEARLE
1.48 Ac.
(8-14-162)

1-153C-8
FEELEY
FAMILY
LTD
PARTNERSHIP,
ETAL
4.33 Ac.
(8-14-166)

1-153C-3
U S OF
AMERICA
41.98 Ac.
(8-14-144)

1-153C-1
OLIVE S ANDERSON TRUSTEE,
HOLLY PRICE,
& JEANNEE HUNT
41.85 Ac.
(8-14-142)

1-153C-6
AL J
HEATON
41.77 Ac.
(8-14-147)

1-153C-4
BOSYDABA
HOLDINGS
LLC
42.06 Ac.
(8-14-145)

1-153C-3
U S OF
AMERICA
41.98 Ac.
(8-14-144)