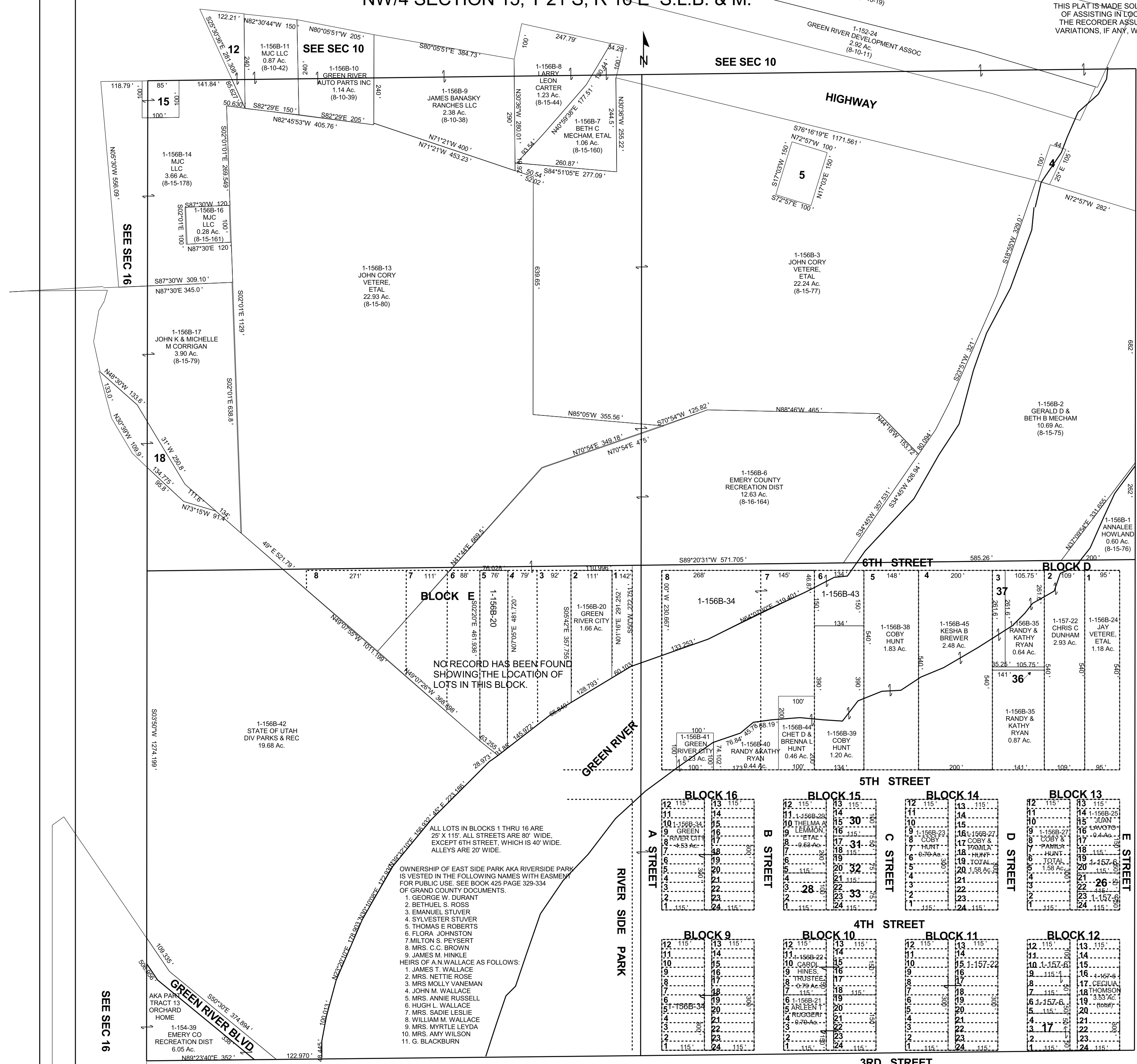


GREEN RIVER  
NW/4 SECTION 15, T 21 S, R 16 E S.L.B. & M.

THIS PLAT IS MADE SOLELY FOR THE PURPOSE OF ASSISTING IN LOCATING THE LAND, AND THE RECORDER ASSUMES NO LIABILITY FOR VARIATIONS, IF ANY, WITH AN ACTUAL SURVEY.



- 1-156B-4 GERALD D & BETH MECHAM 0.92 Ac. (8-15-177)
- 1-156B-5 JOHN CORY VETERE, ETAL 0.34 Ac. (8-15-78)
- 1-156B-12 MJC LLC 0.35 Ac. (8-10-41)
- 1-156B-15 MJC LLC 0.23 Ac. (8-10-81)
- 1-156B-18 MJC LLC 0.57 Ac. (8-16-174)
- 1-156B-26 JANET H HAYS & DALE B HARRIS 0.13 Ac.
- 1-156B-28 PAUL M RYAN 0.26 Ac.
- 1-156B-30 NANCY JEAN MITCHELL 0.26 Ac.
- 1-156B-31 KATHY L & RYANDY C RYAN 0.13 Ac.
- 1-156B-32 KATHY L & RANDY C RYAN 0.20 Ac.
- 1-156B-33 KATHY L & RANDY C RYAN 0.20 Ac.
- 1-156B-36 COBY HUNT 0.027 Ac.
- 1-156B-37 JAMES & CATHEY MATTINGLY 0.21 Ac.
- 1-157-17 JAMIE R RICHARDSON 0.26 Ac.
- 1-157-32 ELMO & JULIA BOWLBY 0.13 Ac.
- 1-157-33 CECILIA THOMSON 0.13 Ac.
- 1-157-43 IRENE WILCOX 0.46 Ac.
- 8-15-103-----1-156B-21
- 8-15-104-----1-156B-22
- 8-15-106-----1-156B-23
- 8-15-107-----1-156B-24
- 8-15-108-----1-156B-25
- 8-15-109-----1-156B-26
- 8-15-110-----1-156B-27
- 8-15-111-----1-156B-28
- 8-15-112-----1-156B-29
- 8-15-113-----1-156B-30
- 8-15-114-----1-156B-31
- 8-15-115-----1-156B-32
- 8-15-116-----1-156B-33
- 8-15-117-----1-156B-34
- 8-15-118-----1-156B-35
- 8-15-119-----1-156B-36
- 8-15-120-----1-156B-37
- 8-15-121-----1-156B-38
- 8-15-122-----1-156B-39
- 8-15-123-----1-156B-40
- 8-15-124-----1-156B-41

NO RECORD HAS BEEN FOUND SHOWING THE LOCATION OF LOTS IN THIS BLOCK.

ALL LOTS IN BLOCKS 1 THRU 16 ARE 25' X 115'. ALL STREETS ARE 80' WIDE, EXCEPT 6TH STREET, WHICH IS 40' WIDE. ALLEYS ARE 20' WIDE.

- OWNERSHIP OF EAST SIDE PARK AKA RIVERSIDE PARK IS VESTED IN THE FOLLOWING NAMES WITH EASEMENT FOR PUBLIC USE. SEE BOOK 425 PAGE 329-334 OF GRAND COUNTY DOCUMENTS.
1. GEORGE W. DURANT
  2. BETHUEL S. ROSS
  3. EMANUEL STUVER
  4. SYLVESTER STUVER
  5. THOMAS E. ROBERTS
  6. FLORA JOHNSTON
  7. MILTON S. PEYSERT
  8. MRS. C. C. BROWN
  9. JAMES M. HINKLE
- HEIRS OF A.N. WALLACE AS FOLLOWS.
1. JAMES T. WALLACE
  2. MRS. NETTIE ROSE
  3. MRS. MOLLY VANEMAN
  4. JOHN M. WALLACE
  5. MRS. ANNIE RUSSELL
  6. HUGH L. WALLACE
  7. MRS. SADDIE LESLIE
  8. WILLIAM M. WALLACE
  9. MRS. MYRTLE LEYDA
  10. MRS. AMY WILSON
  11. G. BLACKBURN

FOR PARCELS 1-157-6 & 22 REFER TO BOOK 1, PAGE 157 (FOR ADDITIONAL ACREAGE).

1-156B  
15-21S-16E