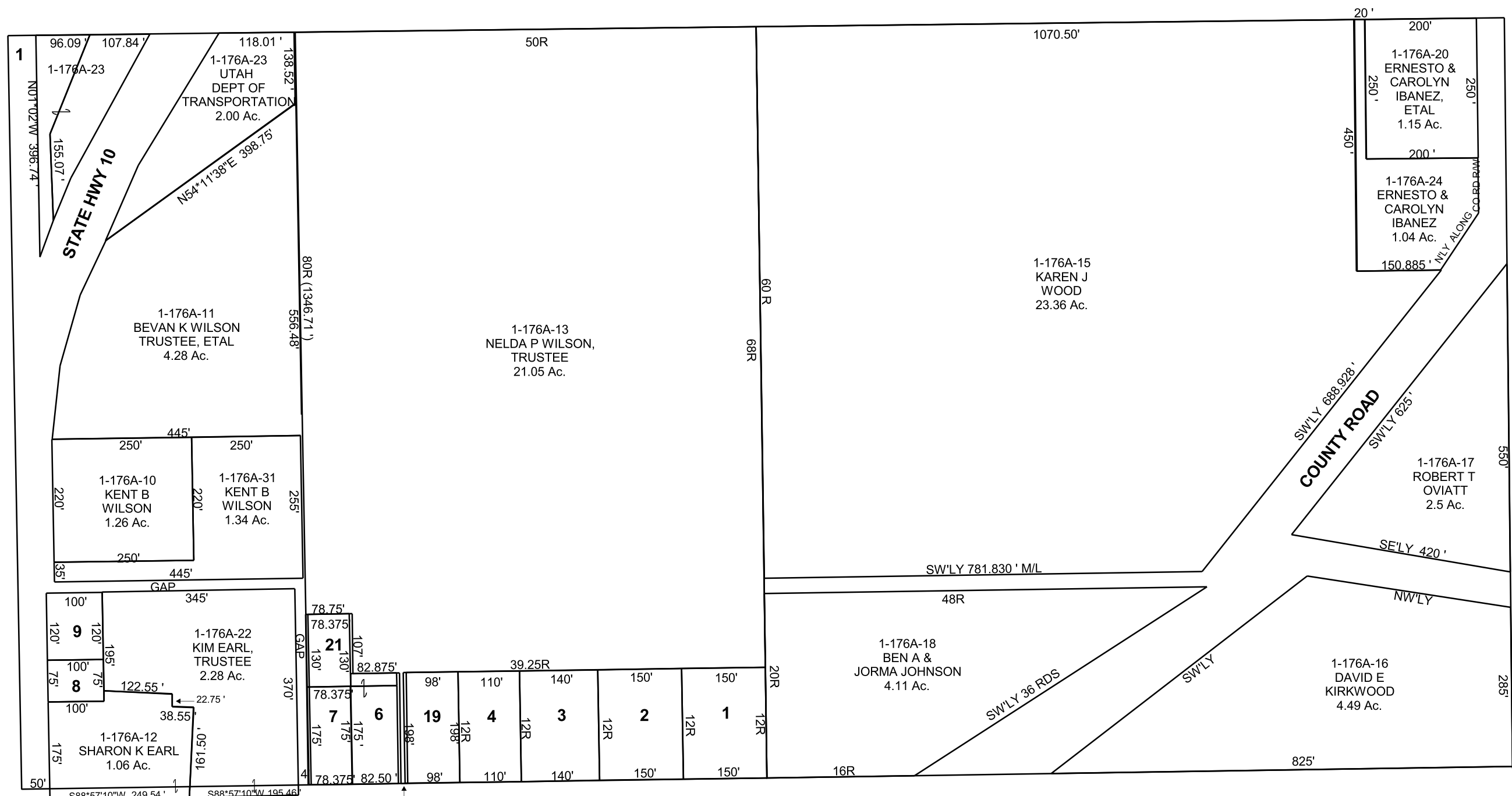


HUNTINGTON

N/2 NW/4 SECTION 19, T 17 S, R 09 E S.L.B. & M.

THIS PLAT IS MADE SOLELY FOR THE PURPOSE OF ASSISTING IN LOCATING THE LAND, AND THE RECORDER ASSUMES NO LIABILITY FOR VARIATIONS, IF ANY, WITH AN ACTUAL SURVEY.



- |   |   |
|---|---|
| 1-176A-1<br>STEVEN LEE<br>& KELLY WILSON<br>0.68 Ac.            | 1-176A-8<br>GARY J &<br>TERRIE WILSON<br>0.17 Ac.   |
| 1-176A-2<br>JOEL R &<br>KATHLEEN MIKICH<br>IVIE<br>0.68 Ac.     | 1-176A-9<br>BIG FUEL, LLC<br>0.28 Ac.               |
| 1-176A-3<br>NOLA F MIKICH &<br>KATHLEEN MIKICH-IVIE<br>0.64 Ac. | 1-176A-18<br>BEN A & JORMA<br>JOHNSON<br>0.75 Ac.   |
| 1-176A-4<br>RICHARD BRENT &<br>HILARY GORDON<br>0.5 Ac.         | 1-176A-19<br>WILLIS J<br>SHUMWAY<br>0.45 Ac.        |
| 1-176A-6<br>NELDA P WILSON,<br>TRUSTEE<br>0.37 Ac.              | 1-176A-21<br>NELDA P WILSON,<br>TRUSTEE<br>0.23 Ac. |
| 1-176A-7<br>LYNNE LOUIE,<br>ETAL<br>0.31 Ac.                    |   |