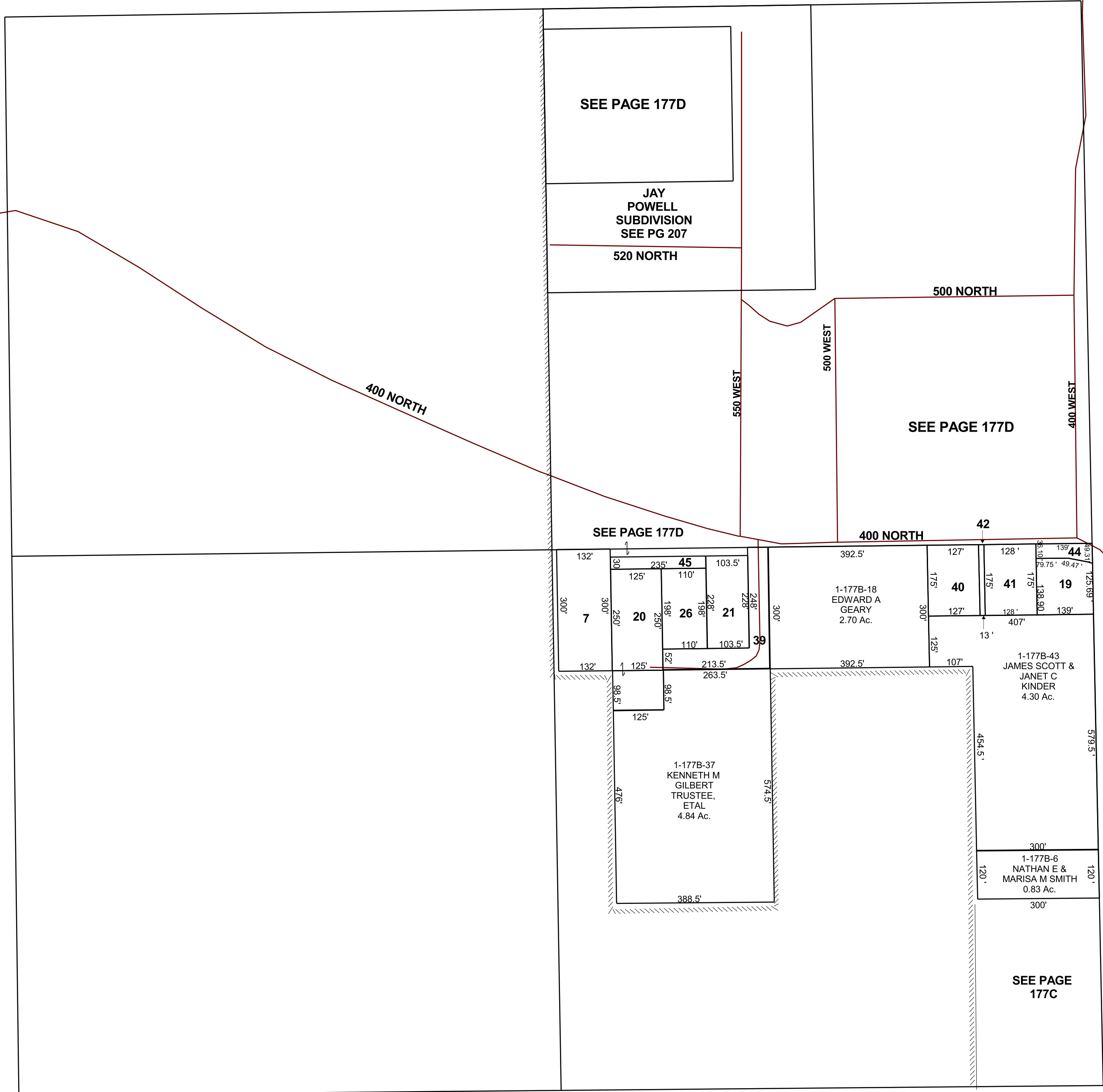


HUNTINGTON

NW/4 SECTION 24, T 17 S, R 08 E S.L.B. & M.

BOOK 1 PAGE 177B
SCALE: 1" = 200'
OCTOBER 26, 2018

THIS PLAT IS MADE SOLELY FOR THE PURPOSE
OF ASSISTING IN LOCATING THE LAND, AND
THE RECORDER ASSUMES NO LIABILITY FOR
VARIATIONS, IF ANY, WITH AN ACTUAL SURVEY.



- 1-177B-7 DANNY LEE JOHNSON TRUSTEE, ETAL 0.91 Ac.
- 1-177B-20 RON A & RAELENE TERWILLEGGER 1.00 Ac.
- 1-177B-19 PATRICIA ANN KINDER SWEET 0.44 Ac.
- 1-177B-21 JANELLA L MANN & KIRT A RASMUSSEN 0.54 Ac.
- 1-177B-26 DALE R & WENDY BLACK 0.5 Ac.
- 1-177B-39 HUNTINGTON CITY 0.6 Ac.
- 1-177B-40 J SCOTT & JANET KINDER 0.51 Ac.
- 1-177B-41 KAMIE KINDER & BRANDON GILL CONOVER 0.51 Ac.
- 1-177B-42 J SCOTT & JANET C KINDER 0.05 Ac.
- 1-177B-44 HUNTINGTON CITY 0.12 Ac.
- 1-177B-45 KENNETH M & CONNIE M GILBERT 0.16 Ac.

1-177B
24-17S-08E