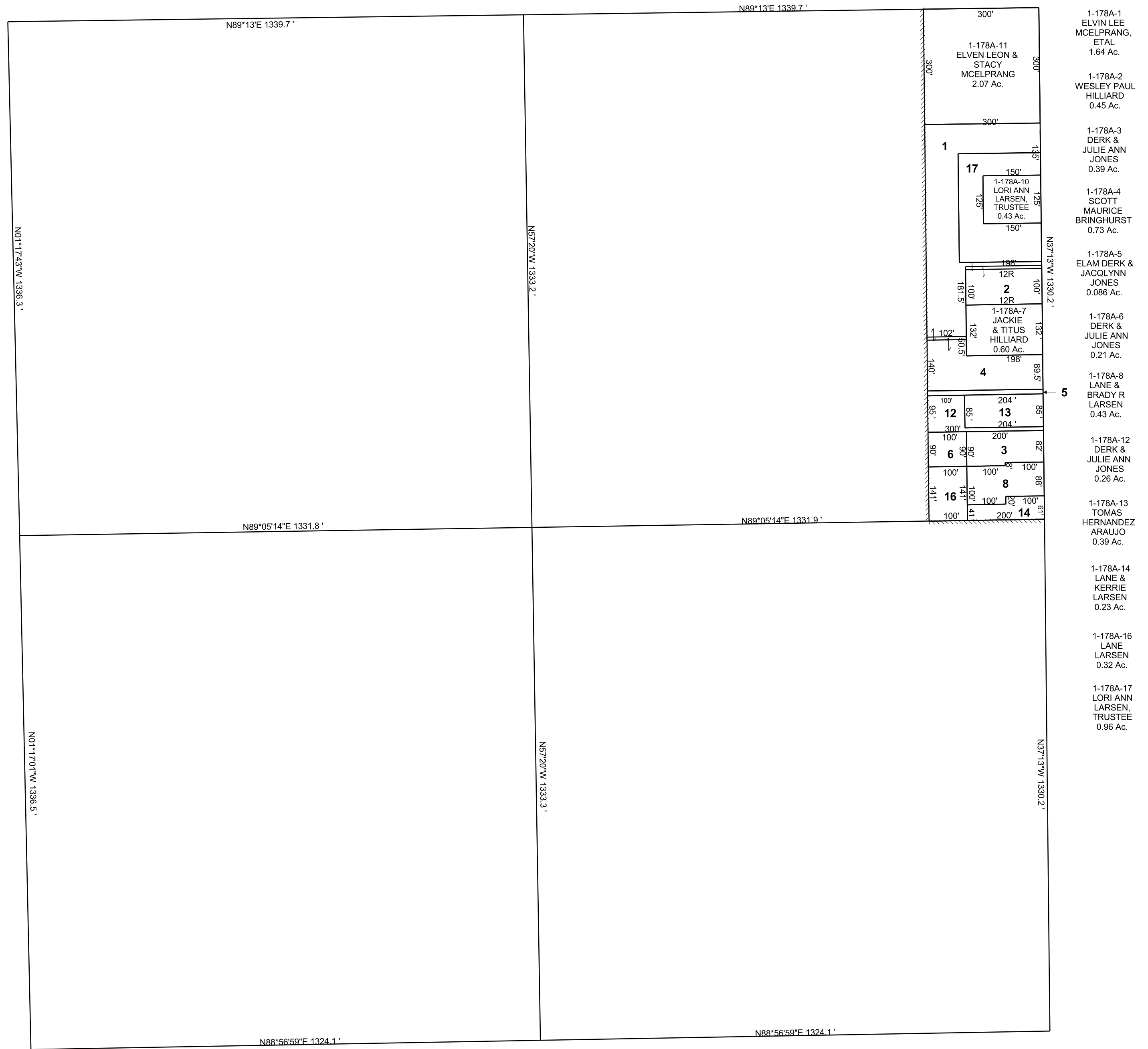


HUNTINGTON

NW/4 SECTION 25, T 17 S, R 08 E S.L.B. & M.

BOOK 1 PAGE 178A  
SCALE: 1" = 200'  
SEPTEMBER 4, 2019

THIS PLAT IS MADE SOLELY FOR THE PURPOSE  
OF ASSISTING IN LOCATING THE LAND, AND  
THE RECORDER ASSUMES NO LIABILITY FOR  
VARIATIONS, IF ANY, WITH AN ACTUAL SURVEY.



- 1-178A-1  
ELVIN LEE  
MCELPRANG,  
ETAL  
1.64 Ac.
- 1-178A-2  
WESLEY PAUL  
HILLIARD  
0.45 Ac.
- 1-178A-3  
DERK &  
JULIE ANN  
JONES  
0.39 Ac.
- 1-178A-4  
SCOTT  
MAURICE  
BRINGHURST  
0.73 Ac.
- 1-178A-5  
ELAM DERK &  
JACOLYNN  
JONES  
0.086 Ac.
- 1-178A-6  
DERK &  
JULIE ANN  
JONES  
0.21 Ac.
- 1-178A-8  
LANE &  
BRADY R  
LARSEN  
0.43 Ac.
- 1-178A-12  
DERK &  
JULIE ANN  
JONES  
0.26 Ac.
- 1-178A-13  
TOMAS  
HERNANDEZ  
ARAUJO  
0.39 Ac.
- 1-178A-14  
LANE &  
KERRIE  
LARSEN  
0.23 Ac.
- 1-178A-16  
LANE  
LARSEN  
0.32 Ac.
- 1-178A-17  
LORI ANN  
LARSEN,  
TRUSTEE  
0.96 Ac.