

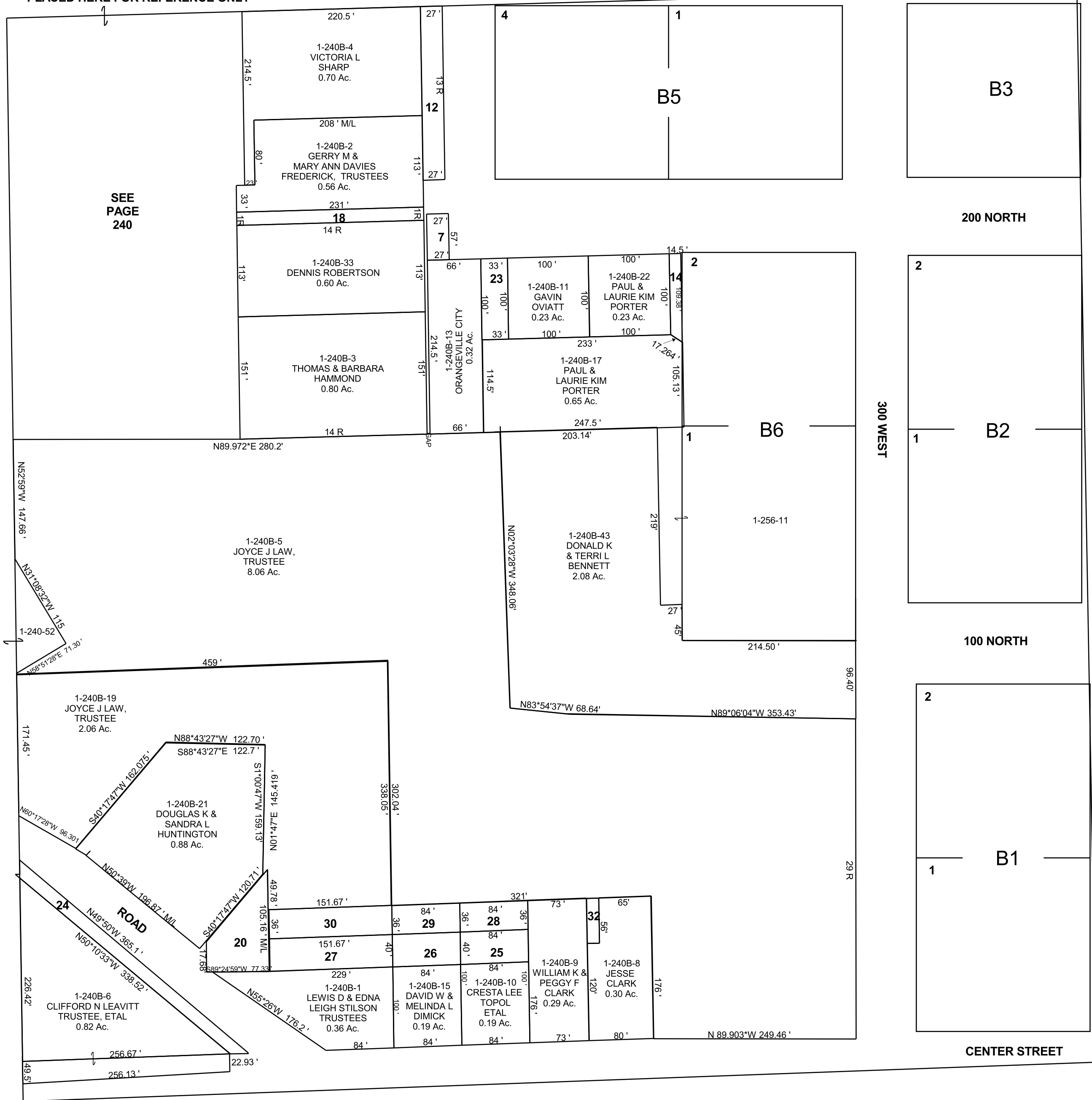
ORANGEVILLE

BOOK 1 PAGE 240B
SCALE: 1" = 100'
DECEMBER 22, 2022

SE/4 NE/4 SECTION 30, T 18 S, R 08 E S.L.B. & M.

THIS PLAT IS MADE SOLELY FOR THE PURPOSE
OF ASSISTING IN LOCATING THE LAND, AND
THE RECORDER ASSUMES NO LIABILITY FOR
VARIATIONS, IF ANY, WITH AN ACTUAL SURVEY.

THE BLOCKS ON THIS PAGE HAVE BEEN
PLACED HERE FOR REFERENCE ONLY



SEE
PAGE
240

- 1-240B-7 ORANGEVILLE CITY 0.035 Ac.
- 1-240B-12 ORANGEVILLE CITY 0.13 Ac.
- 1-240B-14 PAUL & LAURIE KIM PORTER 0.035 Ac.
- 1-240B-18 JOYCE J LAW, TRUSTEE 0.087 Ac.
- 1-240B-20 LEWIS E & EDNA LEIGH STILSON TRUSTEES 0.14 Ac.
- 1-240B-23 LILLY H TAYLOR, LEE G & PHYLLIS HUMPHREY 0.076 Ac.
- 1-240B-24 ORANGEVILLE CITY 0.13 Ac.
- 1-240B-25 CRESTA LEE TOPOL & ZEBULUN JOHN FARMER 0.077 Ac.
- 1-240B-26 DAVID W & MELINDA L DIMICK 0.077 Ac.
- 1-240B-27 LEWIS D & EDNA LEIGH STILSON TRUSTEES 0.14 Ac.
- 1-240B-28 CRESTA LEE TOPOL & ZEBULUN JOHN FARMER 0.07 Ac.
- 1-240B-29 DAVID W & MELINDA L DIMICK 0.07 Ac.
- 1-240B-30 LEWIS D & EDNA LEIGH STILSON TRUSTEES 0.13 Ac.
- 1-240B-31 DOUGLAS K & SANDRA L HUNTINGTON 0.06 Ac.
- 1-240B-32 JESSE KAY CLARK 0.019 Ac.