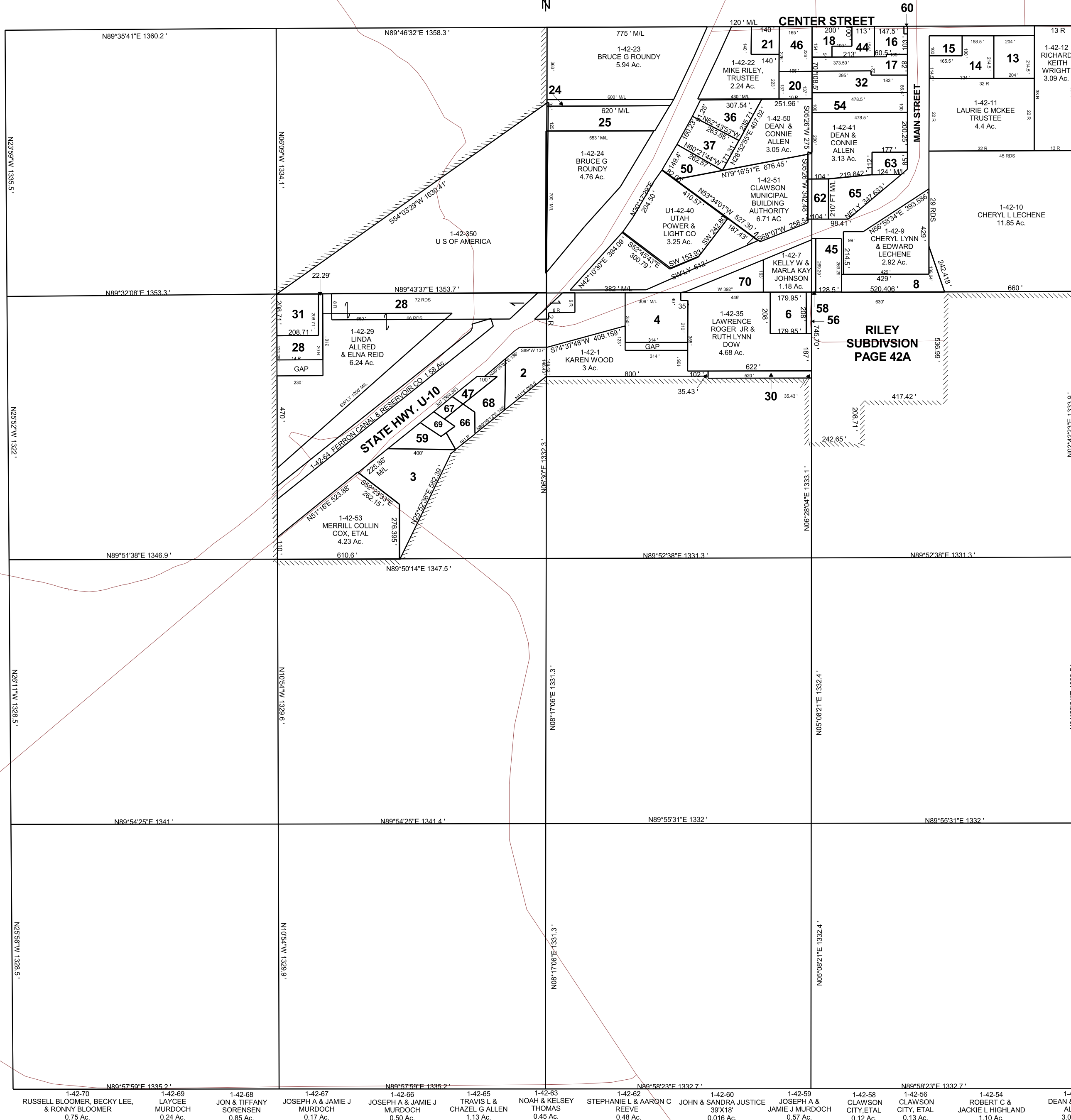


CLAWSON

SECTION 35, T 19 S, R 07 E S.L.B. & M.

BOOK 1 PAGE 42
SCALE: 1" = 400'
OCTOBER 11, 2021

THIS PLAT IS MADE SOLELY FOR THE PURPOSE
OF ASSISTING IN LOCATING THE LAND, AND
THE RECORDER ASSUMES NO LIABILITY FOR
VARIATIONS, IF ANY, WITH AN ACTUAL SURVEY.



RILEY
SUBDIVISION
PAGE 42A

- 1-42-70 RUSSELL BLOOMER, BECKY LEE, & RONNY BLOOMER 0.75 Ac.
- 1-42-69 LAYCEE MURDOCH 0.24 Ac.
- 1-42-68 JON & TIFFANY SORENSEN 0.85 Ac.
- 1-42-67 JOSEPH A & JAMIE J MURDOCH 0.17 Ac.
- 1-42-66 JOSEPH A & JAMIE J MURDOCH 0.50 Ac.
- 1-42-65 TRAVIS L & CHAZEL G ALLEN 1.13 Ac.
- 1-42-63 NOAH & KELSEY THOMAS 0.45 Ac.
- 1-42-62 STEPHANIE L & AARON C REEVE 0.48 Ac.
- 1-42-60 JOHN & SANDRA JUSTICE 0.016 Ac.
- 1-42-59 JOSEPH A & JAMIE J MURDOCH 0.57 Ac.
- 1-42-58 CLAWSON CITY, ETAL 0.12 Ac.
- 1-42-56 CLAWSON CITY, ETAL 0.13 Ac.
- 1-42-54 ROBERT C & JACKIE L HIGHLAND 1.10 Ac.
- 1-42-50 DEAN & CONNIE ALLEN 3.05 Ac.

1-42
35-19S 07E