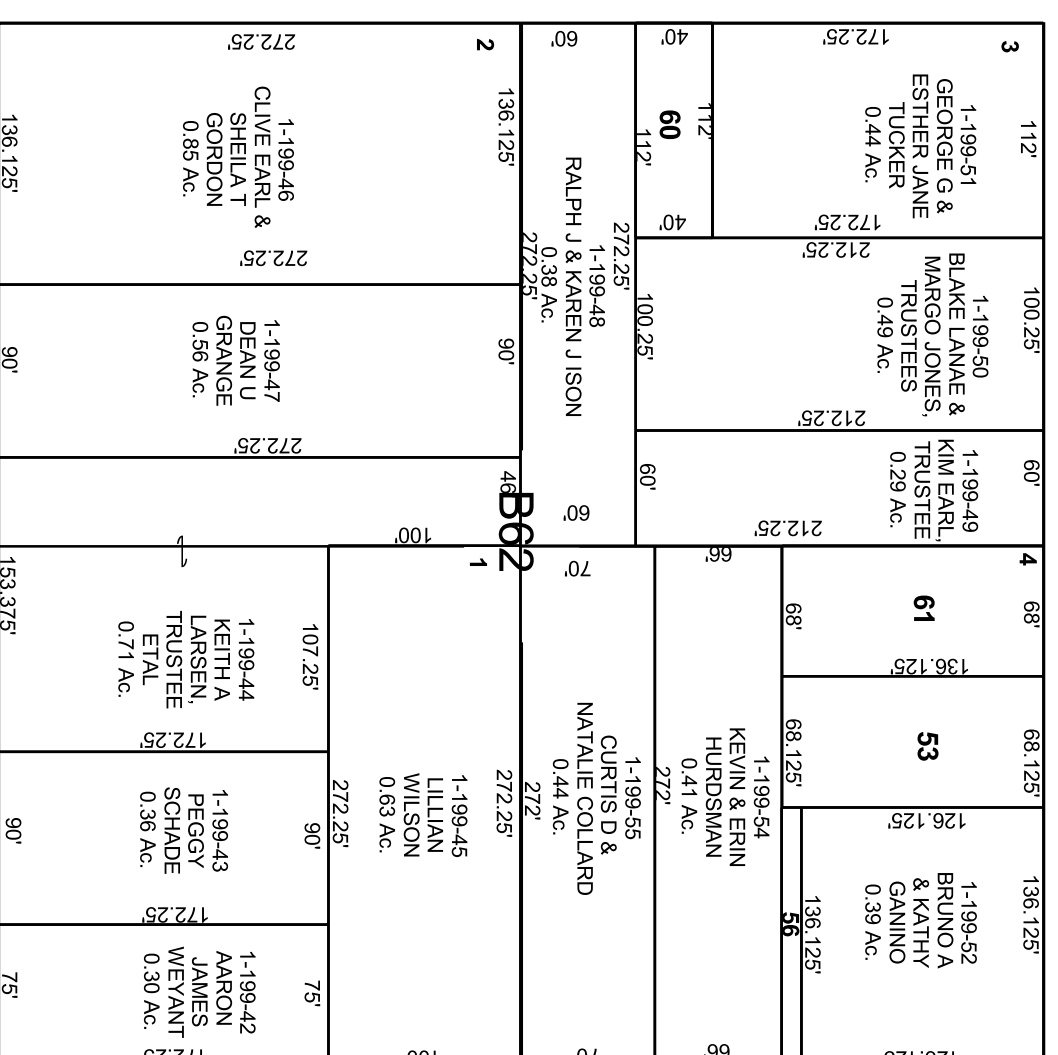
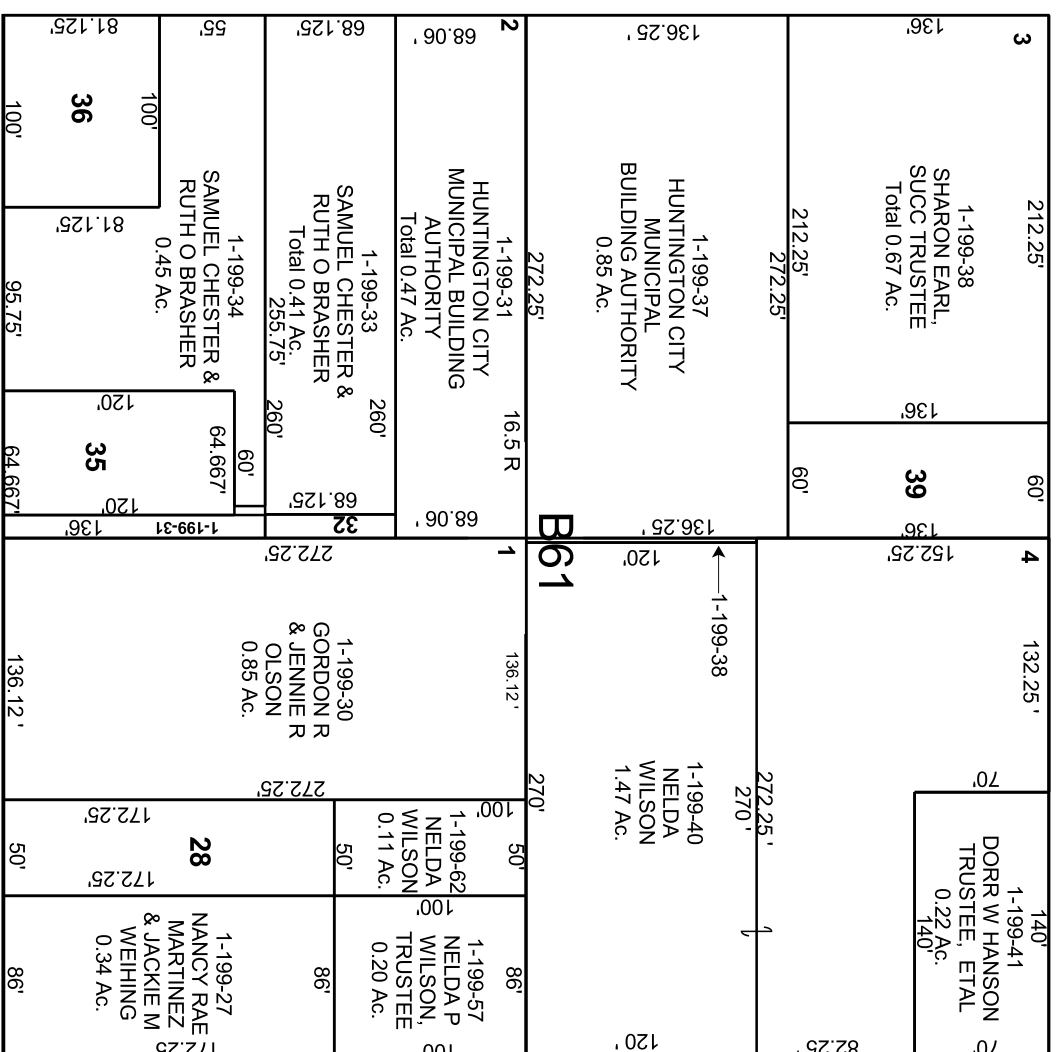


HUNTINGTON

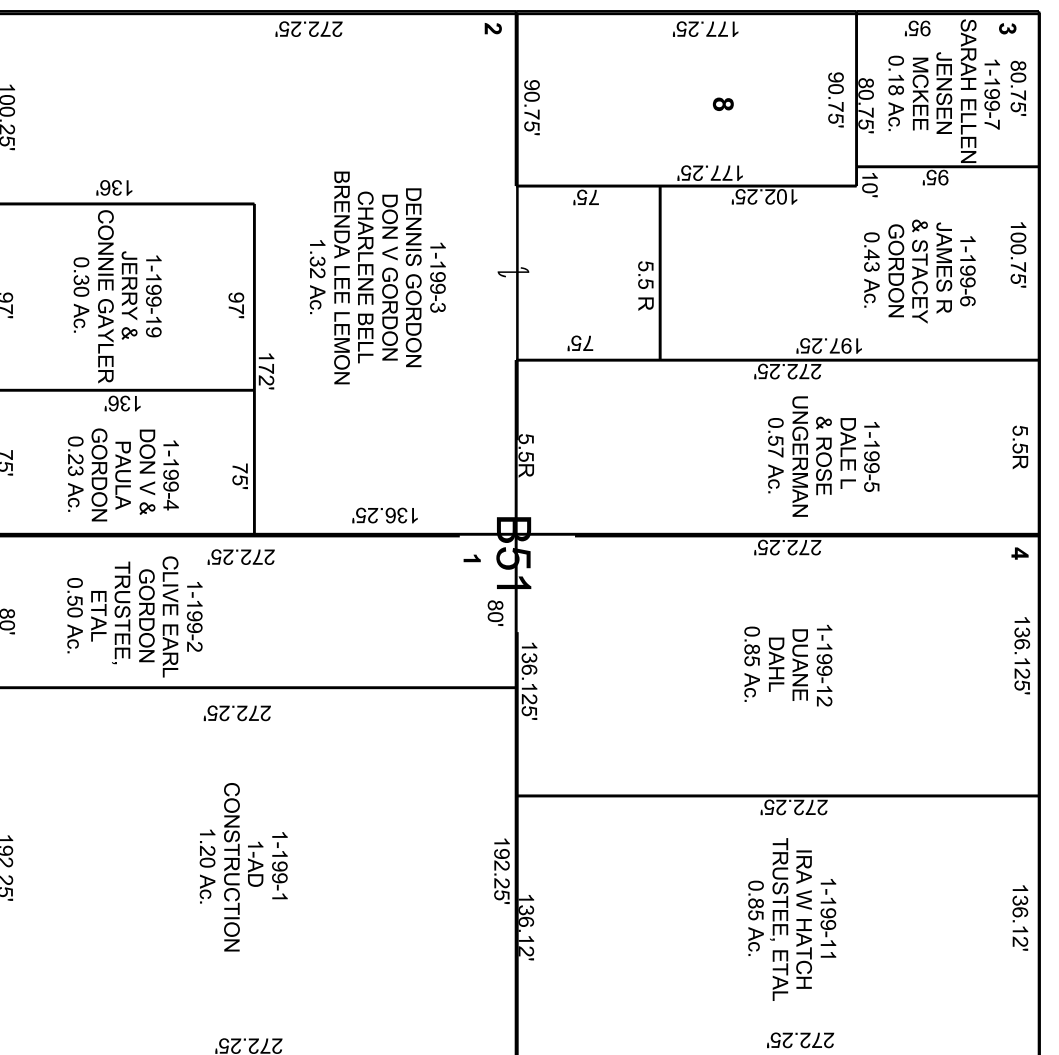
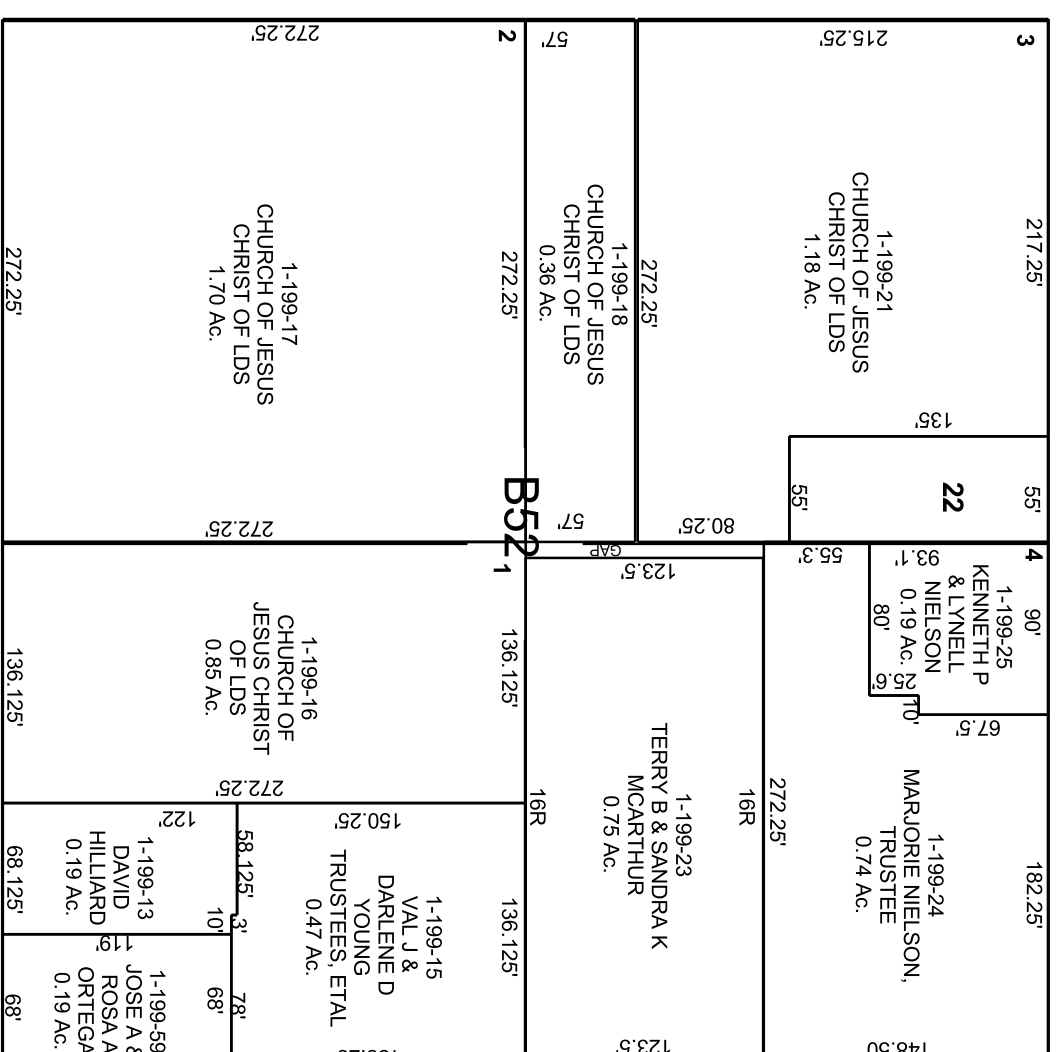
SW/4 NW/4 SECTION 19, T 17 S, R 09 E S.L.B. & M.

THIS PLAT IS MADE SOLELY FOR THE PURPOSE OF ASSISTING IN LOCATING THE LAND, AND THE RECORDER ASSUMES NO LIABILITY FOR VARIATIONS, IF ANY, WITH AN ACTUAL SURVEY.



99' 11' 10" 300

99' 100' NORTH 99'



W1/4 COR.

EAST 99'

1-199-36 SAMUEL CHESTER & RUTH O BRASHER 0.19 Ac.

1-199-39 SHARON EARL, TRUSTEE 0.19 Ac.

1-199-53 PAULA JEAN MANCHESTER, PER REP, ETAL 0.21 Ac.

1-199-56 KEVIN & ERIN HURDSMAN 0.03 Ac.

1-199-60 RALPH J & KAREN J OLSON 0.10 Ac.

1-199-61 THOMAS & ANNETTE GRIMI 0.21 Ac.