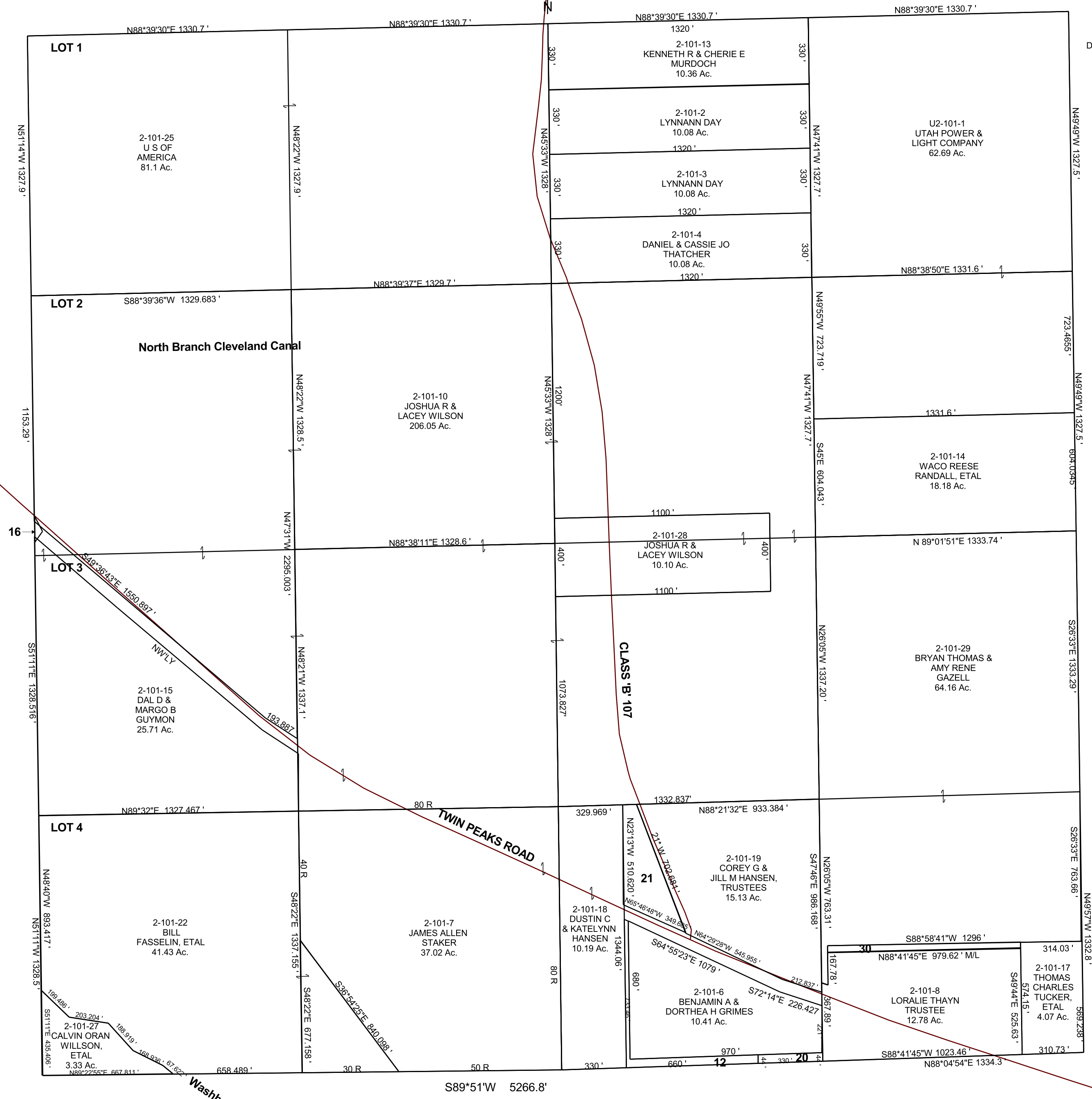


SECTION 18, T 16 S, R 10 E S.L.B. & M.

THIS PLAT IS MADE SOLELY FOR THE PURPOSE OF ASSISTING IN LOCATING THE LAND, AND THE RECORDER ASSUMES NO LIABILITY FOR VARIATIONS, IF ANY, WITH AN ACTUAL SURVEY.

Twin Peaks Wash



- 2-101-12
DUSTIN C & KATELYNN
HANSEN
1.01 Ac.
- 2-101-16
EMERY
COUNTY
0.058 Ac.
- 2-101-20
KIRK T &
ANN E ELLIOT
0.33 Ac.
- 2-101-21
DUSTIN C
HANSEN
2.40 Ac.
- 2-101-30
LORALIE THAYN
TRUSTEE
0.75 Ac.