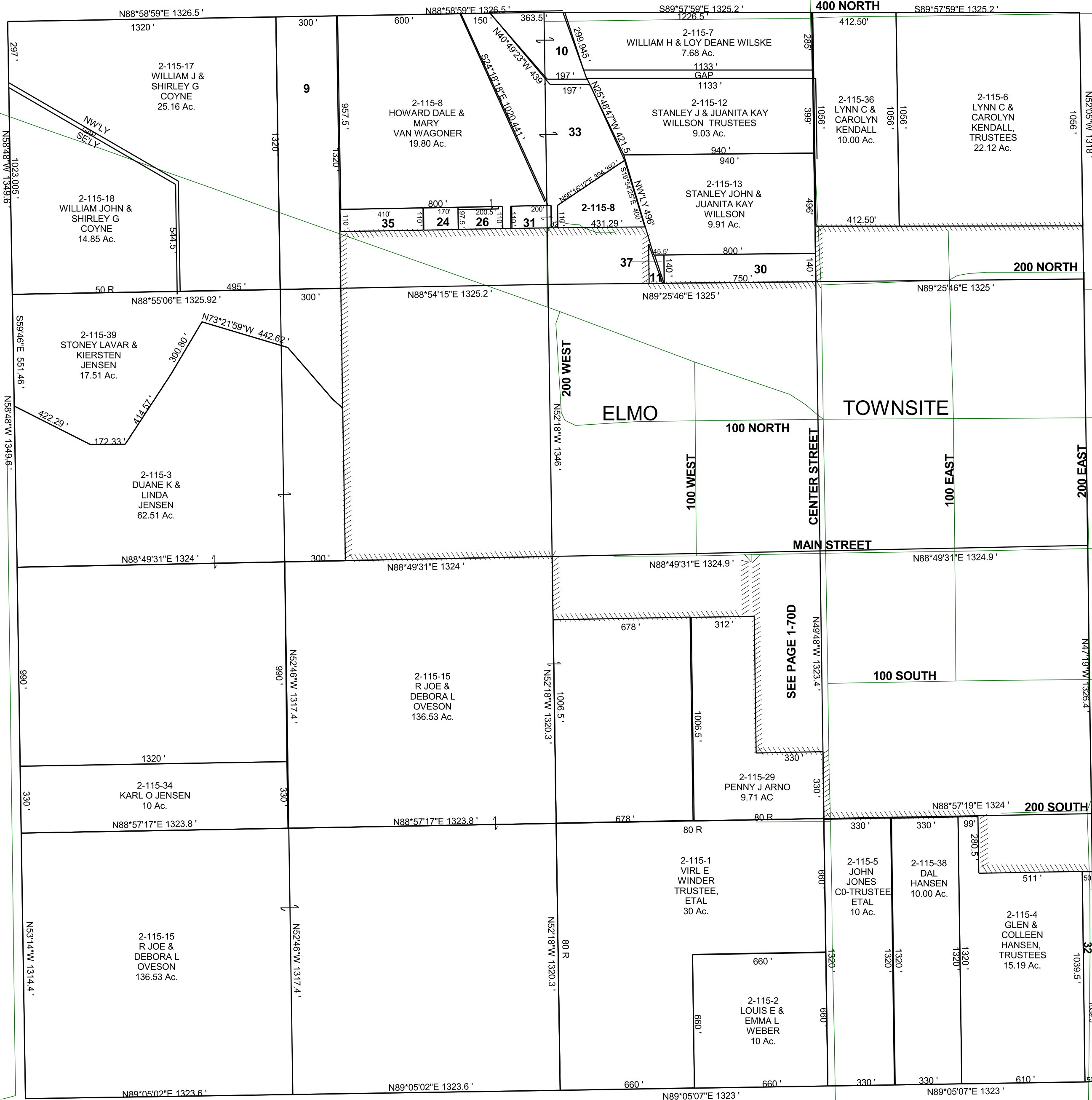


SECTION 32, T 16 S, R 10 E S.L.B. & M.

BOOK 2 PAGE 115
SCALE: 1" = 400'
FEBRUARY 15, 2018

THIS PLAT IS MADE SOLELY FOR THE PURPOSE
OF ASSISTING IN LOCATING THE LAND, AND
THE RECORDER ASSUMES NO LIABILITY FOR
VARIATIONS, IF ANY, WITH AN ACTUAL SURVEY.



- 2-115-9
DAVID A &
JOANNE E
VAN WAGONER
9.09 Ac.
- 2-115-10
WILLIAM H &
LOY DEANE
WILSKE
2.12 Ac.
- 2-115-11
WAYNE M &
MARY VIRGINIA
JONES
0.16 Ac.
- 2-115-24
NEWT & ZANDRIA
JENSEN
0.43 Ac.
- 2-115-26
LEO &
SUE
FERRAN
0.50 Ac.
- 2-115-30
JAMES P &
CRISTAL A
JUDD
2.41 Ac.
- 2-115-31
DALE &
COLLETTE
VAN WAGONER
0.51 Ac.
- 2-115-32
ELMO
TOWN
1.19 Ac.
- 2-115-33
MARY COLLETTE
VANWAGONER &
DIANE R WEBBER
7.44 Ac.
- 2-115-35
HOWARD
VAN WAGONER
1.04 Ac.
- 2-115-37
STANLEY J &
JUANITA KAY
WILLSON
TRUSTEES
0.08 Ac.

2-115
32-16S-10E