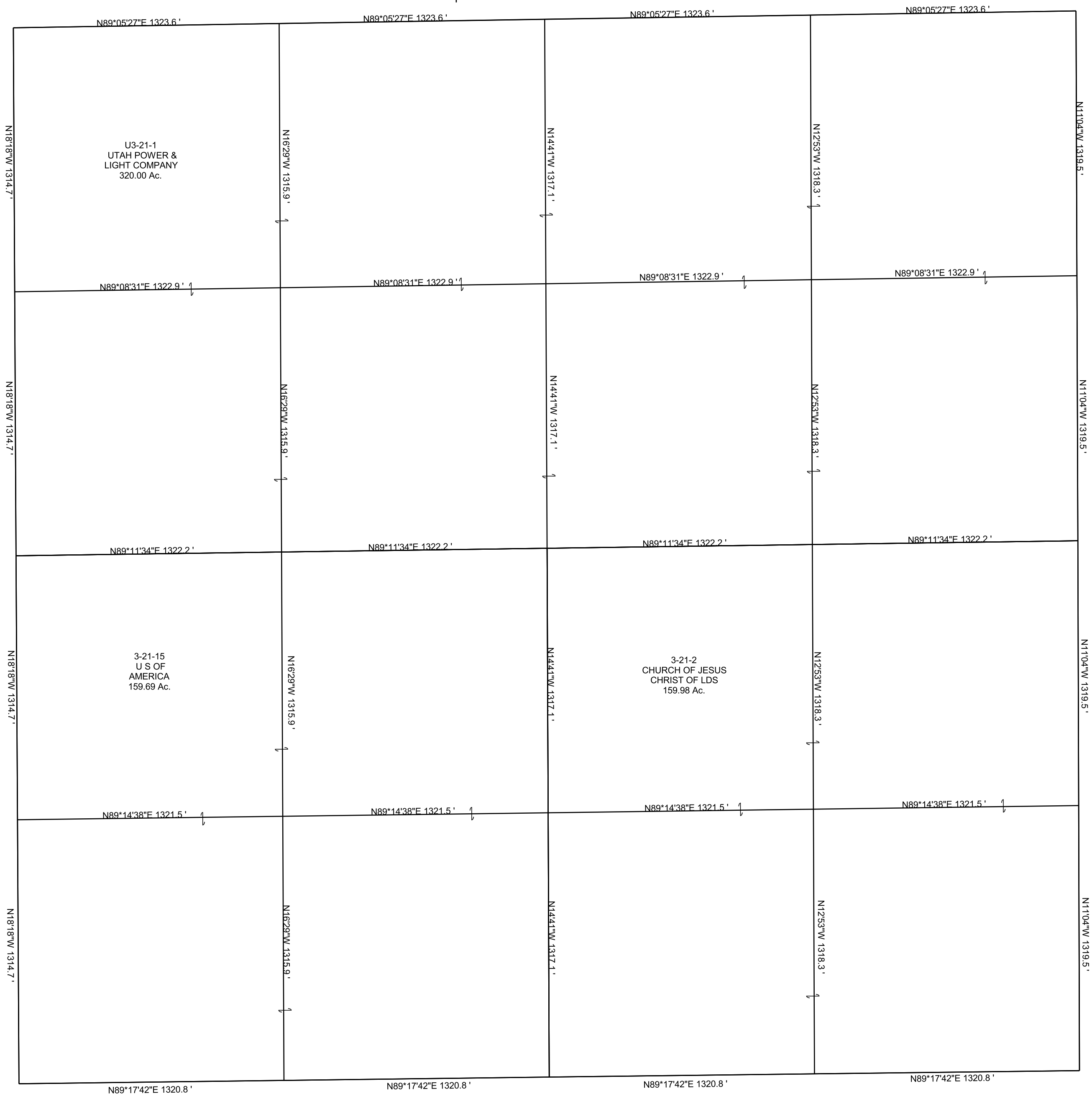


SECTION 15, T 17 S, R 7 E S.L.B. & M.



THIS PLAT IS MADE SOLELY FOR THE PURPOSE  
OF ASSISTING IN LOCATING THE LAND, AND  
THE RECORDER ASSUMES NO LIABILITY FOR  
VARIATIONS, IF ANY, WITH AN ACTUAL SURVEY.



U3-21-1  
UTAH POWER &  
LIGHT COMPANY  
320.00 Ac.

3-21-15  
U S OF  
AMERICA  
159.69 Ac.

3-21-2  
CHURCH OF JESUS  
CHRIST OF LDS  
159.98 Ac.