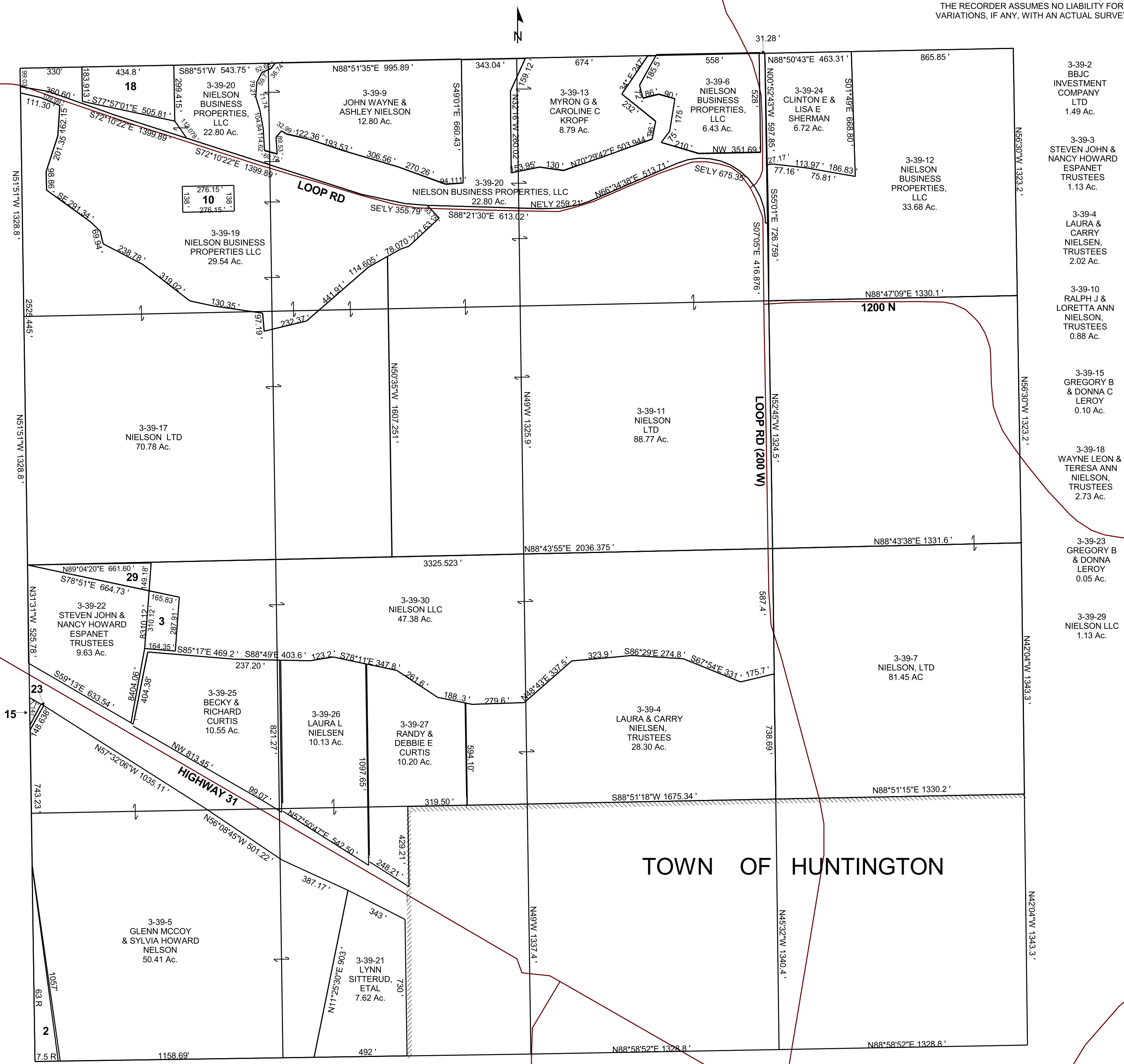


SECTION 13, T 17 S, R 08 E S.L.B. & M.

BOOK 3 PAGE 39
SCALE: 1" = 400'
APRIL 16, 2018

THIS PLAT IS MADE SOLELY FOR THE PURPOSE OF ASSISTING IN LOCATING THE LAND, AND THE RECORDER ASSUMES NO LIABILITY FOR VARIATIONS, IF ANY, WITH AN ACTUAL SURVEY.



- 3-39-2 BBJC INVESTMENT COMPANY LTD 1.49 Ac.
- 3-39-3 STEVEN JOHN & NANCY HOWARD ESPANET TRUSTEES 1.13 Ac.
- 3-39-4 LAURA & CARRY NIELSEN, TRUSTEES 2.02 Ac.
- 3-39-10 RALPH J & LORETTA ANN NIELSON, TRUSTEES 0.88 Ac.
- 3-39-15 GREGORY B & DONNA C LEROY 0.10 Ac.
- 3-39-18 WAYNE LEON & TERESA ANN NIELSON, TRUSTEES 2.73 Ac.
- 3-39-23 GREGORY B & DONNA LEROY 0.05 Ac.
- 3-39-29 NIELSON LLC 1.13 Ac.

TOWN OF HUNTINGTON

3-39
13-17S-08E