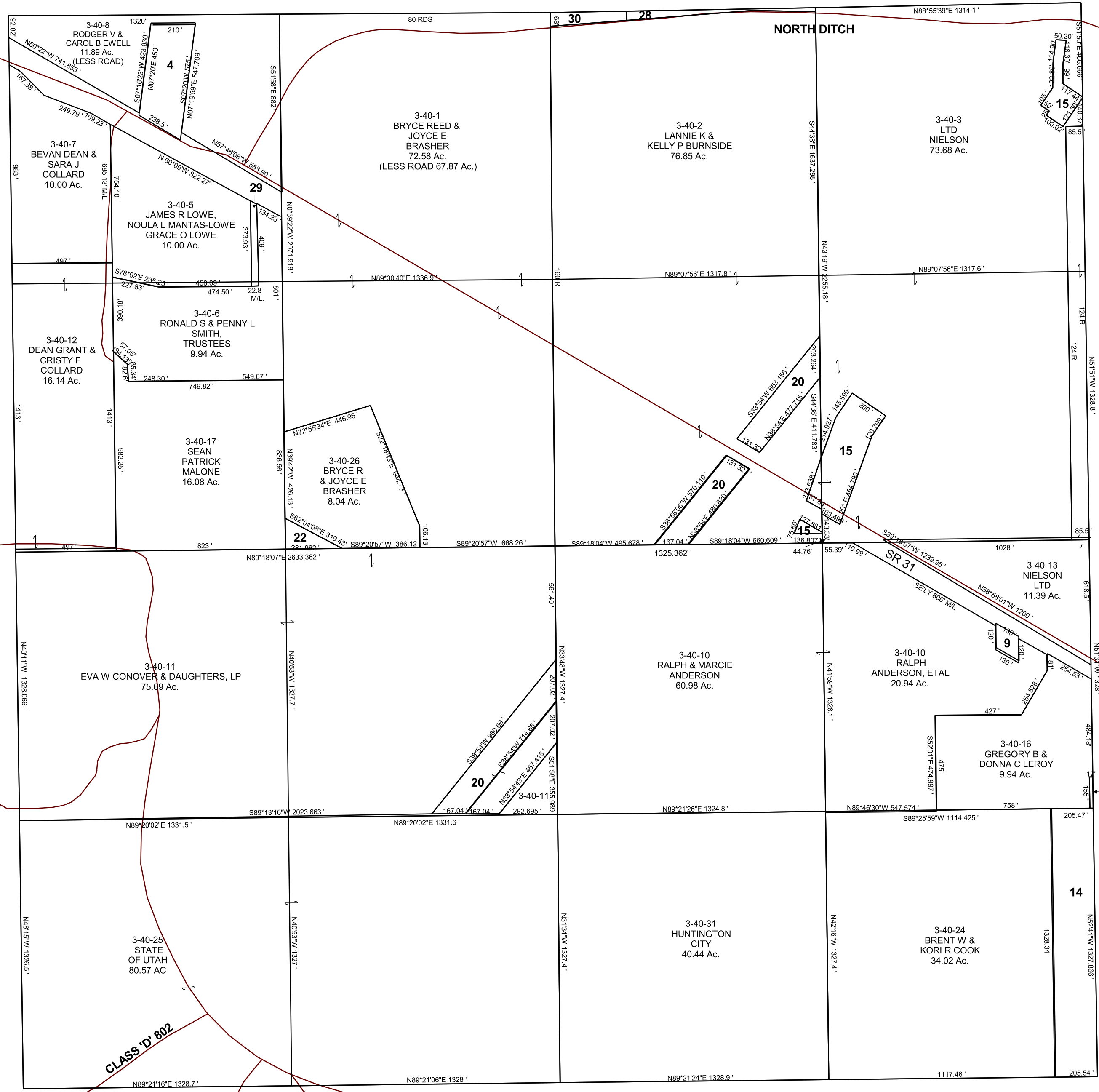


SECTION 14, T 17 S, R 8 E S.L.B. & M.

THIS PLAT IS MADE SOLELY FOR THE PURPOSE OF ASSISTING IN LOCATING THE LAND, AND THE RECORDER ASSUMES NO LIABILITY FOR VARIATIONS, IF ANY, WITH AN ACTUAL SURVEY.



- 3-40-9 RALPH ANDERSON, ETAL 0.31 Ac.
- 3-40-4 HELEN F MORGAN 2.58 Ac.
- 3-40-9 RALPH & MARCIE ANDERSON 0.31 Ac.
- 3-40-13 NIELSON LTD 4.02 Ac.
- 3-40-14 GEORGE G & ESTHER JANE TUCKER 6.17 Ac.
- 3-40-15 U S OF AMERICA 3.61 AC
- U3-40-20 UTAH POWER & LIGHT COMPANY 7.47 Ac.
- 3-40-21 REVA MCKEE 1.04 Ac.
- 3-40-22 CELSIUS ENERGY COMPANY 0.48 Ac.
- 3-40-27 GLEN M & SYLVIA H NELSON 0.06 Ac.
- 3-40-28 PAUL FERRIS & LAURA LEE P WOOD, TRUSTEES 0.49 Ac.
- 3-40-29 RONALD S & PENNY L SMITH, TRUSTEES 0.32 Ac.
- 3-40-30 PAUL FERRIS & LAURA LEE P WOOD, TRUSTEES 0.49 Ac.