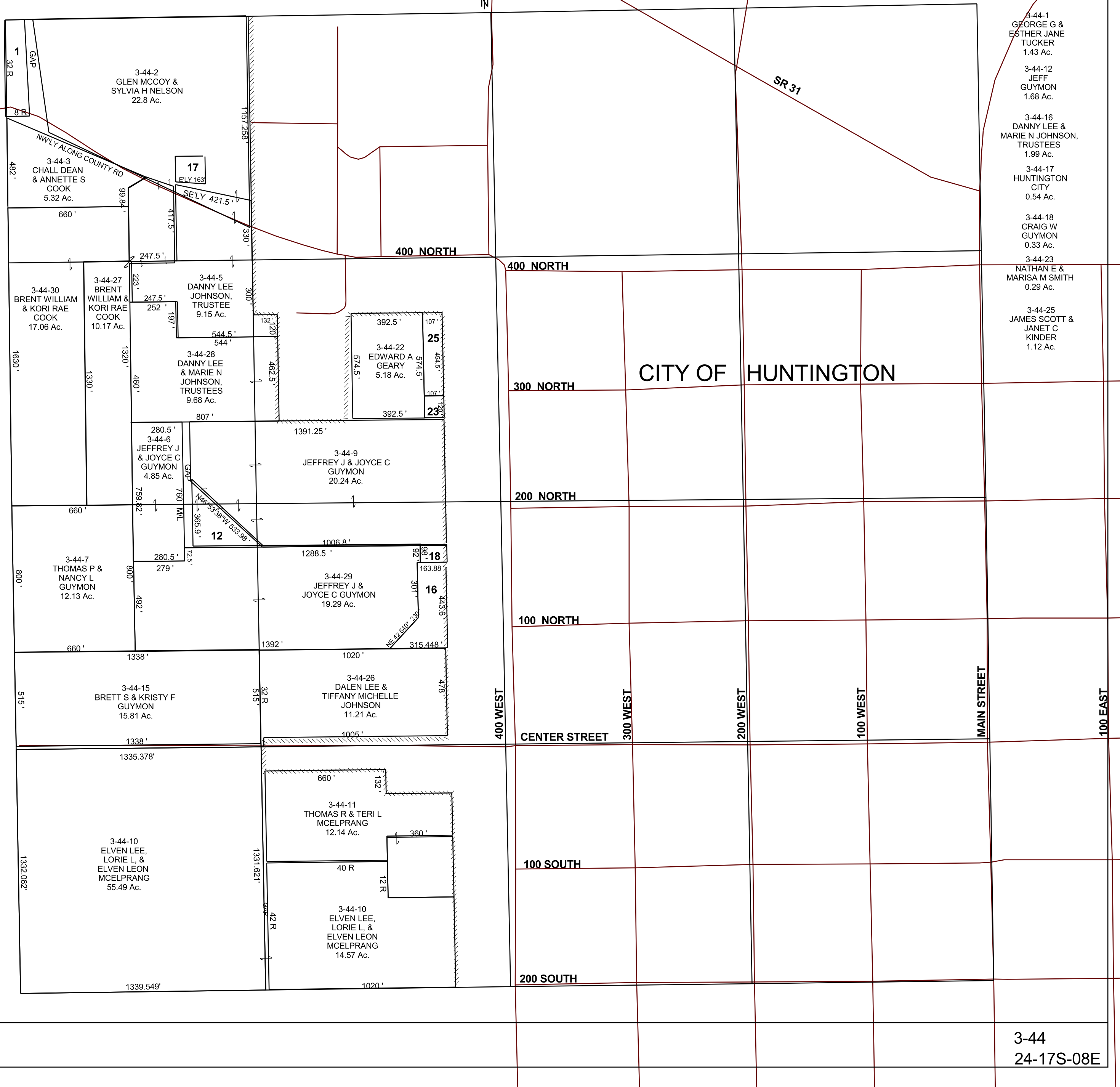


SECTION 24, T 17 S, R 08 E S.L.B. & M.

THIS PLAT IS MADE SOLELY FOR THE PURPOSE OF ASSISTING IN LOCATING THE LAND, AND THE RECORDER ASSUMES NO LIABILITY FOR VARIATIONS, IF ANY, WITH AN ACTUAL SURVEY.



- 3-44-1 GEORGE G & ESTHER JANE TUCKER 1.43 Ac.
- 3-44-12 JEFF GUYMON 1.68 Ac.
- 3-44-16 DANNY LEE & MARIE N JOHNSON, TRUSTEES 1.99 Ac.
- 3-44-17 HUNTINGTON CITY 0.54 Ac.
- 3-44-18 CRAIG W GUYMON 0.33 Ac.
- 3-44-23 NATHAN E & MARISA M SMITH 0.29 Ac.
- 3-44-25 JAMES SCOTT & JANET C KINDER 1.12 Ac.