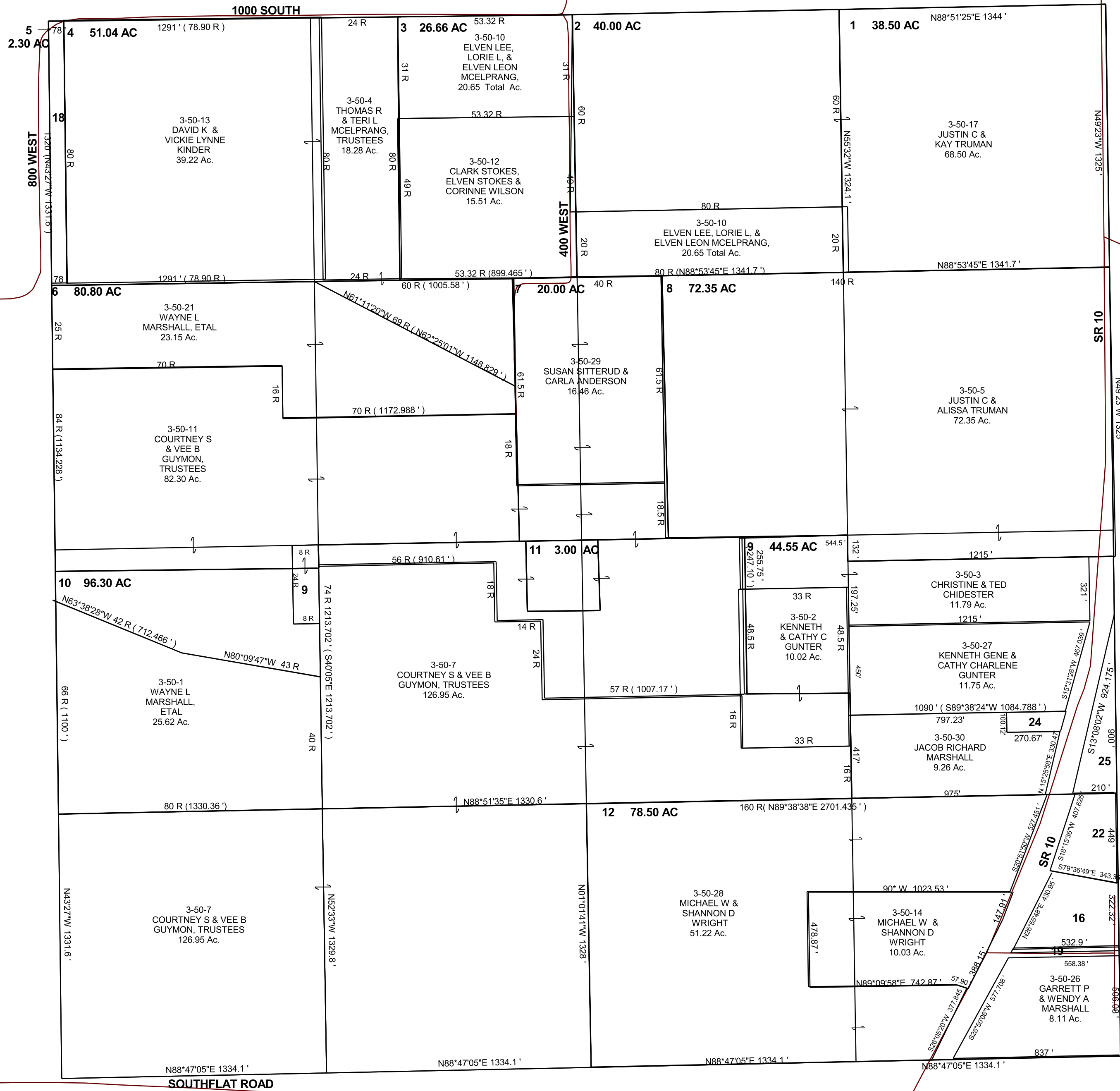


SECTION 36, T 17 S, R 08 E S.L.B. & M.

THIS PLAT IS MADE SOLELY FOR THE PURPOSE OF ASSISTING IN LOCATING THE LAND, AND THE RECORDER ASSUMES NO LIABILITY FOR VARIATIONS, IF ANY, WITH AN ACTUAL SURVEY.

RECORDS SHOW THAT HISTORICALLY THE EAST 1/4 OF THIS SECTION IS 77 RDS WIDE.



- 3-50-9 JAN P FOWLER ETAL 1.20 Ac.
- 3-50-16 CATHOLIC DIOCESE OF SALT LAKE CITY 3.60 Ac.
- 3-50-18 EMERY COUNTY 2.36 Ac.
- 3-50-19 EMERY COUNTY 0.31 Ac.
- 3-50-22 THOMAS R & MCELPRANG TRUSTEE, ETAL 2.68 Ac.
- 3-50-24 CORDIE DAWN MARSHALL 0.66 Ac.
- 3-50-25 THOMAS R MCELPRANG TRUSTEE, ETAL 2.17 Ac.