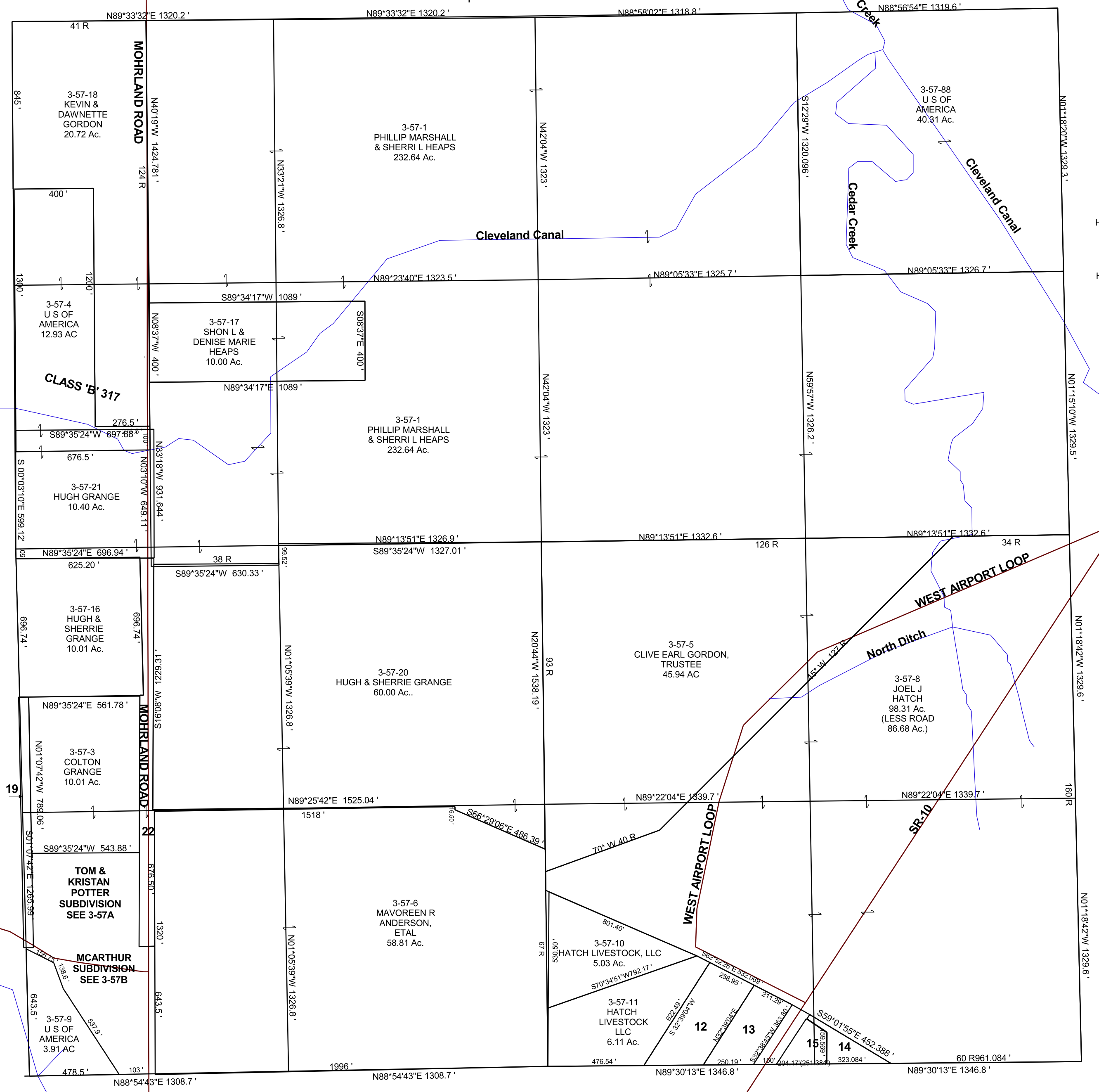


SECTION 8, T 17 S, R 09 E S.L.B. & M.

THIS PLAT IS MADE SOLELY FOR THE PURPOSE OF ASSISTING IN LOCATING THE LAND, AND THE RECORDER ASSUMES NO LIABILITY FOR VARIATIONS, IF ANY, WITH AN ACTUAL SURVEY.



- 3-57-12 HATCH LIVESTOCK LLC 3.16 Ac.
- 3-57-13 LARRY D & JODY A PRETTYMAN, TRUSTEES 2.05 Ac.
- 3-57-14 HATCH LIVESTOCK, LLC 0.80 Ac.
- 3-57-15 HATCH LIVESTOCK, LLC 0.85 Ac.
- 3-57-19 HUGH & SHERRIE GRANGE 1.45 Ac.
- 3-57-22 EMERY COUNTY 3.08 Ac.