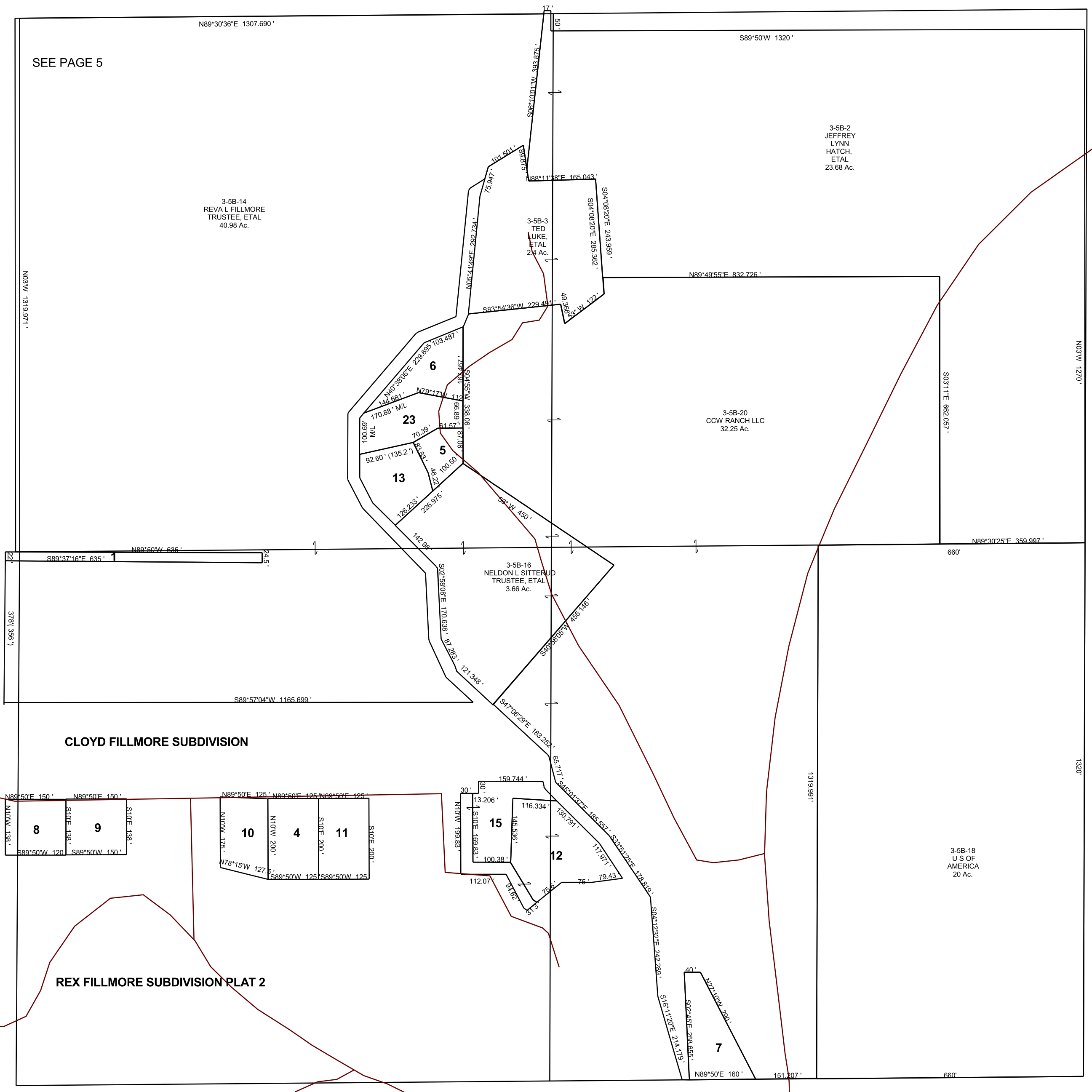


SE/4 SECTION 18, T 17 S, R 6 E S.L.B. & M.

THIS PLAT IS MADE SOLELY FOR THE PURPOSE
OF ASSISTING IN LOCATING THE LAND, AND
THE RECORDER ASSUMES NO LIABILITY FOR
VARIATIONS, IF ANY, WITH AN ACTUAL SURVEY.



SEE PAGE 5

- 3-5B-1
BRUCE L & CHRISTINE
POLSEN, ETAL
0.34 Ac.
- 3-5B-4
LORETTA
TUCKER, ETAL
0.57 Ac.
- 3-5B-5
MICHAEL A &
JOY M GIPSON
0.28 Ac.
- 3-5B-6
KAJEK
ENTERPRISES
LC
0.54 Ac.
- 3-5B-7
GERALDINE P SNOW &
SPENCER WILLIAM SNOW
0.59 Ac.
- 3-5B-8
JAMES & JOANNE
RUGGERI, ETAL
0.48 Ac.
- 3-5B-9
JIM & JOANN
RUGGERI
0.48 Ac.
- 3-5B-10
MIKE E LESSAR &
SHELLEY L WRIGHT
0.54 Ac.
- 3-5B-11
LORETTA S &
MICHAEL F
TUCKER
0.57 Ac.
- 3-5B-12
RONALD ALAN
FOSSAT, ETAL
1.28 Ac.
- 3-5B-13
WESLEE
JOHNSON
0.56 Ac.
- 3-5B-15
GARY &
PATRICIA
ATWOOD,
TRUSTEES
0.84 Ac.
- 3-5B-23
KAJEK
ENTERPRISES
LC
0.57 Ac.