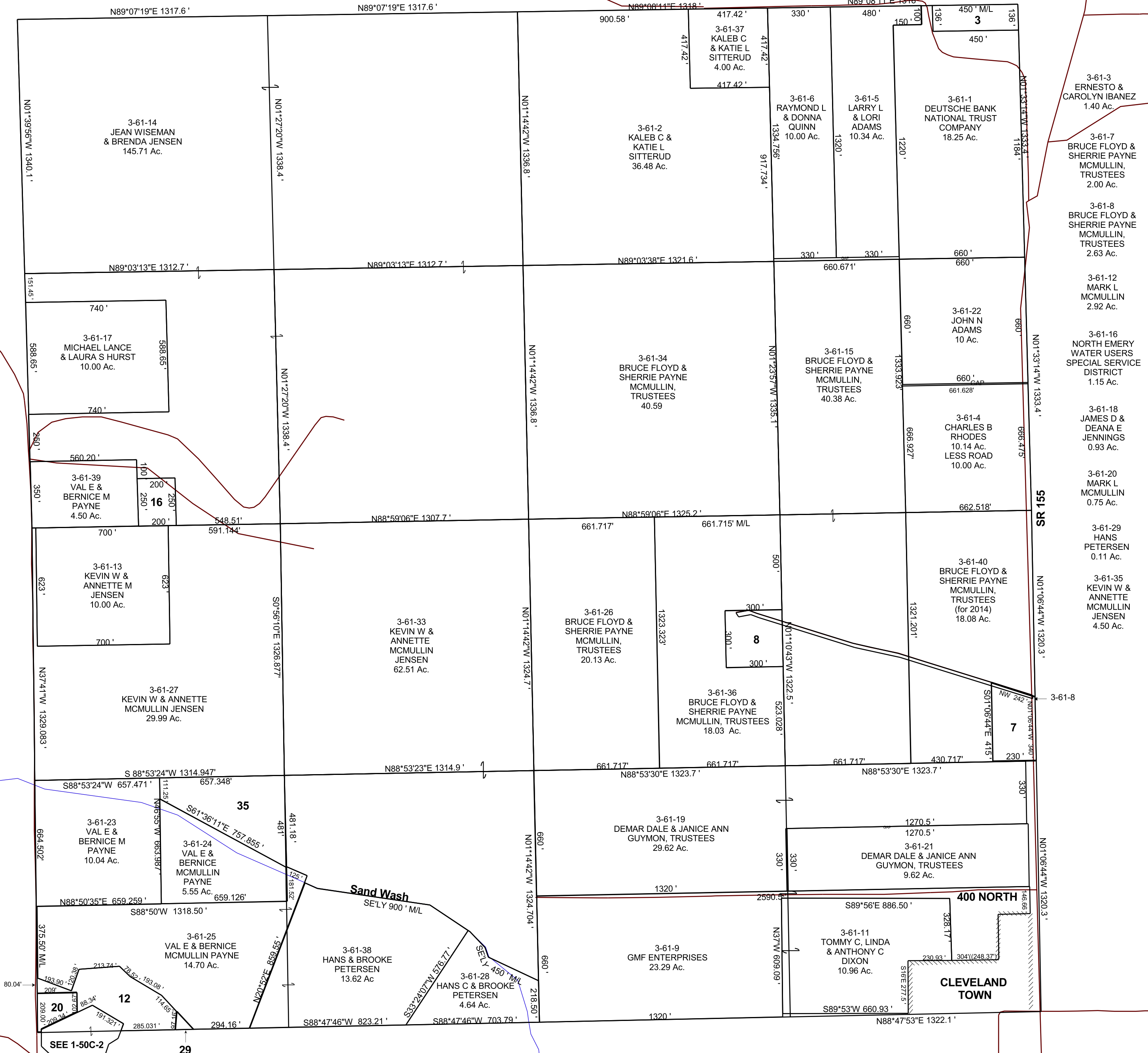


SECTION 12, T 17 S, R 09 E S.L.B. & M.

THIS PLAT IS MADE SOLELY FOR THE PURPOSE OF ASSISTING IN LOCATING THE LAND, AND THE RECORDER ASSUMES NO LIABILITY FOR VARIATIONS, IF ANY, WITH AN ACTUAL SURVEY.



- 3-61-3 ERNESTO & CAROLYN IBANEZ 1.40 Ac.
- 3-61-7 BRUCE FLOYD & SHERRIE PAYNE MCMULLIN, TRUSTEES 2.00 Ac.
- 3-61-8 BRUCE FLOYD & SHERRIE PAYNE MCMULLIN, TRUSTEES 2.63 Ac.
- 3-61-12 MARK L MCMULLIN 2.92 Ac.
- 3-61-16 NORTH EMERY WATER USERS SPECIAL SERVICE DISTRICT 1.15 Ac.
- 3-61-18 JAMES D & DEANA E JENNINGS 0.93 Ac.
- 3-61-20 MARK L MCMULLIN 0.75 Ac.
- 3-61-29 HANS PETERSEN 0.11 Ac.
- 3-61-35 KEVIN W & ANNETTE MCMULLIN JENSEN 4.50 Ac.

551 SR

400 NORTH

CLEVELAND TOWN