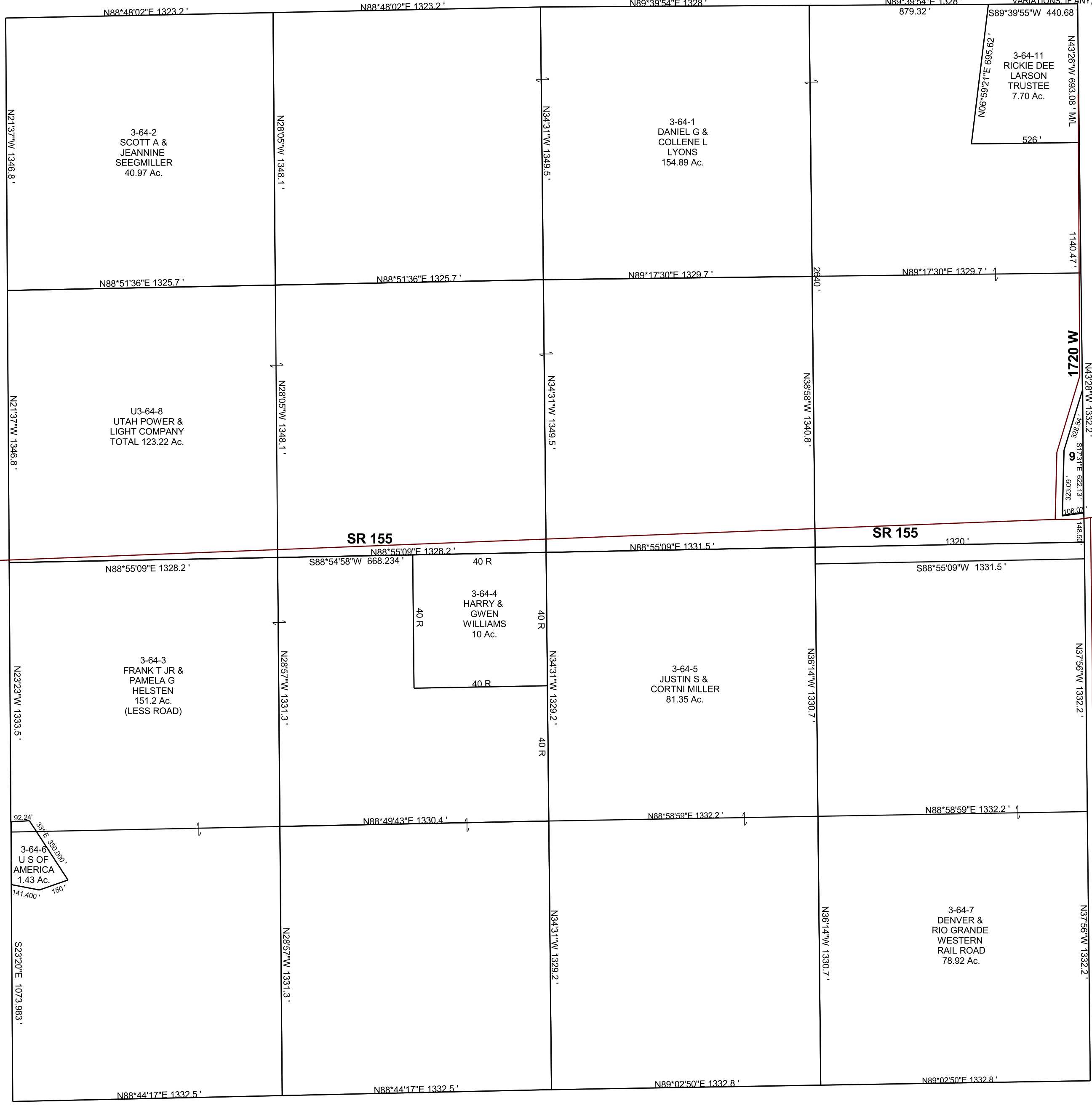


SECTION 15, T 17 S, R 09 E S.L.B. & M.

BOOK 3 PAGE 64  
SCALE: 1" = 400'  
FEBRUARY 13, 2018

THIS PLAT IS MADE SOLELY FOR THE PURPOSE  
OF ASSISTING IN LOCATING THE LAND, AND  
THE RECORDER ASSUMES NO LIABILITY FOR  
VARIATIONS, IF ANY, WITH AN ACTUAL SURVEY.



3-64-9  
RICKIE DEE  
LARSON,  
TRUSTEE  
1.03 Ac.

3-64-11  
RICKIE DEE  
LARSON  
TRUSTEE  
7.70 Ac.

3-64-2  
SCOTT A &  
JEANNINE  
SEEGMILLER  
40.97 Ac.

3-64-1  
DANIEL G &  
COLLENE L  
LYONS  
154.89 Ac.

U3-64-8  
UTAH POWER &  
LIGHT COMPANY  
TOTAL 123.22 Ac.

SR 155

SR 155

3-64-4  
HARRY &  
GWEN  
WILLIAMS  
10 Ac.

3-64-5  
JUSTIN S &  
CORTNI MILLER  
81.35 Ac.

3-64-3  
FRANK T JR &  
PAMELA G  
HELSTEN  
151.2 Ac.  
(LESS ROAD)

3-64-6  
U S OF  
AMERICA  
1.43 Ac.

3-64-7  
DENVER &  
RIO GRANDE  
WESTERN  
RAIL ROAD  
78.92 Ac.

3-64  
15-17S-09E