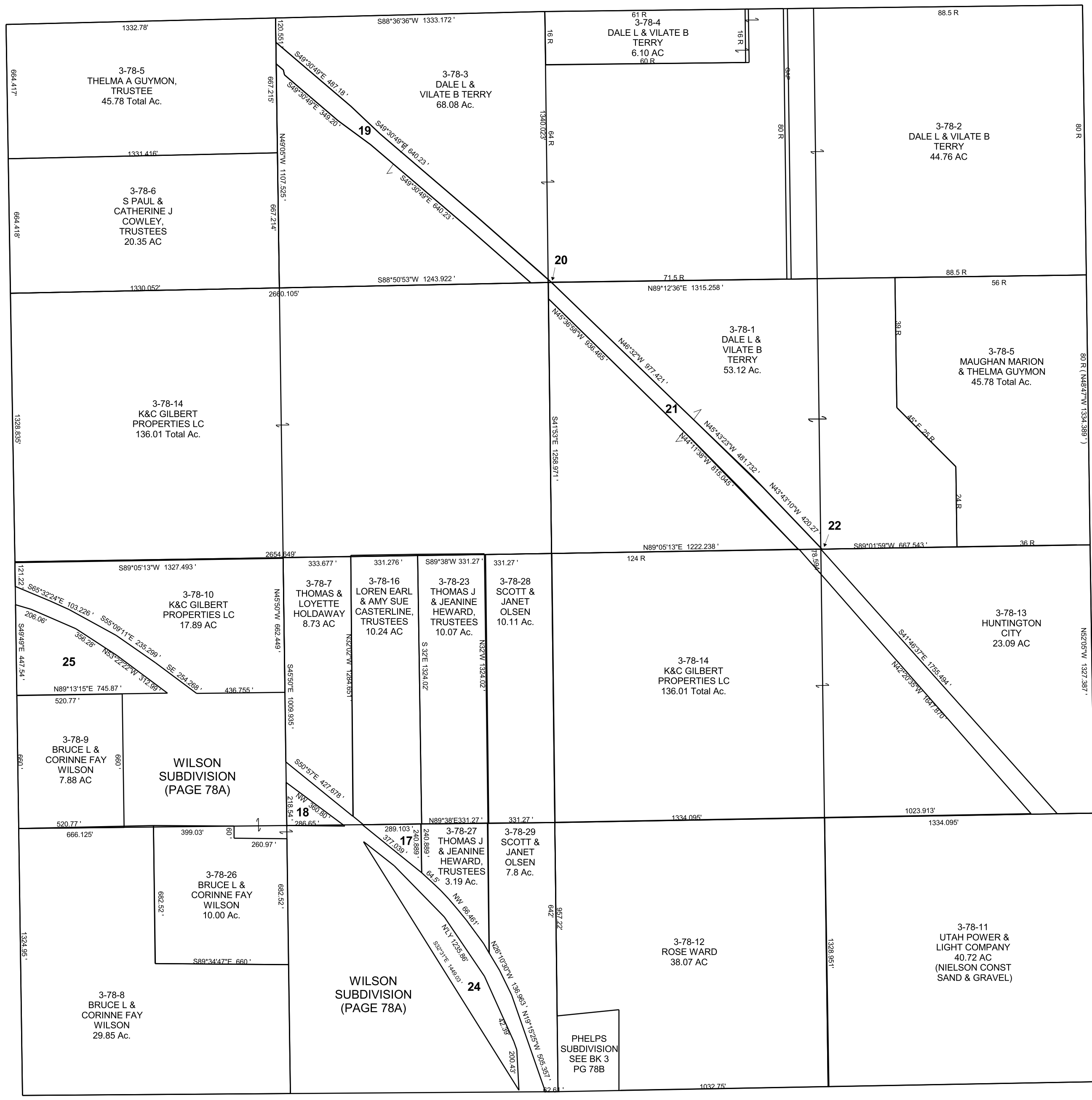


SECTION 29, T 17 S, R 09 E S.L.B. & M.

THIS PLAT IS MADE SOLELY FOR THE PURPOSE OF ASSISTING IN LOCATING THE LAND, AND THE RECORDER ASSUMES NO LIABILITY FOR VARIATIONS, IF ANY, WITH AN ACTUAL SURVEY.



- 3-78-17 LOREN EARL & AMY SUE CASTERLINE, TRUSTEES, 0.80 AC
- 3-78-18 BRUCE L & CORINNE FAY WILSON, 0.70 AC
- 3-78-19 EMERY COUNTY, 3.06 Ac.
- 3-78-20 EMERY COUNTY, 0.003 Ac.
- 3-78-21 EMERY COUNTY, 3.22 Ac.
- 3-78-22 EMERY COUNTY, 0.00 Ac.
- 3-78-24 CHASE E & HALYN R SHERMAN, 3.51 Ac.
- 3-78-25 BRUCE L & CORINNE FAY WILSON, 4.39 Ac.