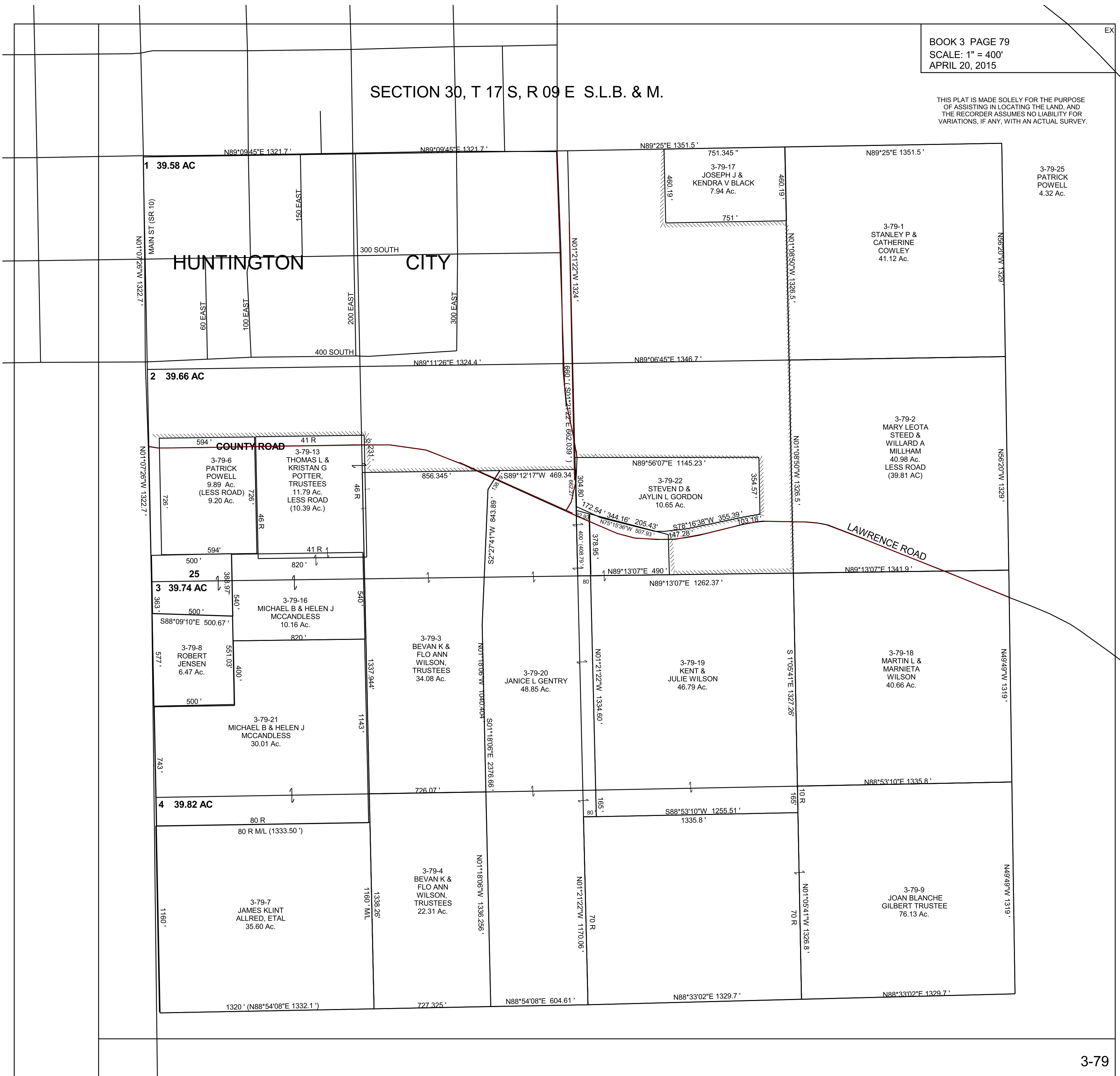


SECTION 30, T 17 S, R 09 E S.L.B. & M.

THIS PLAT IS MADE SOLELY FOR THE PURPOSE OF ASSISTING IN LOCATING THE LAND, AND THE RECORDER ASSUMES NO LIABILITY FOR VARIATIONS, IF ANY, WITH AN ACTUAL SURVEY.



3-79-25  
PATRICK  
POWELL  
4.32 Ac.

3-79-1  
STANLEY P &  
CATHERINE  
COWLEY  
41.12 Ac.

3-79-2  
MARY LEOTA  
STEED &  
WILLARD A  
MILLHAM  
40.98 Ac.  
LESS ROAD  
(39.81 AC)

3-79-6  
PATRICK  
POWELL  
9.89 Ac.  
(LESS ROAD)  
9.20 Ac.

3-79-13  
THOMAS L &  
KRISTAN G  
POTTER,  
TRUSTEES  
11.79 Ac.  
LESS ROAD  
(10.39 Ac.)

3-79-22  
STEVEN D &  
JAYLIN L GORDON  
10.65 Ac.

3-79-8  
ROBERT  
JENSEN  
6.47 Ac.

3-79-16  
MICHAEL B & HELEN J  
MCCANDLESS  
10.16 Ac.

3-79-3  
BEVAN K &  
FLO ANN  
WILSON,  
TRUSTEES  
34.08 Ac.

3-79-20  
JANICE L GENTRY  
48.85 Ac.

3-79-19  
KENT &  
JULIE WILSON  
46.79 Ac.

3-79-18  
MARTIN L &  
MARNIETA  
WILSON  
40.66 Ac.

3-79-21  
MICHAEL B & HELEN J  
MCCANDLESS  
30.01 Ac.

3-79-7  
JAMES KLINT  
ALLRED, ETAL  
35.60 Ac.

3-79-4  
BEVAN K &  
FLO ANN  
WILSON,  
TRUSTEES  
22.31 Ac.

3-79-9  
JOAN BLANCHE  
GILBERT TRUSTEE  
76.13 Ac.