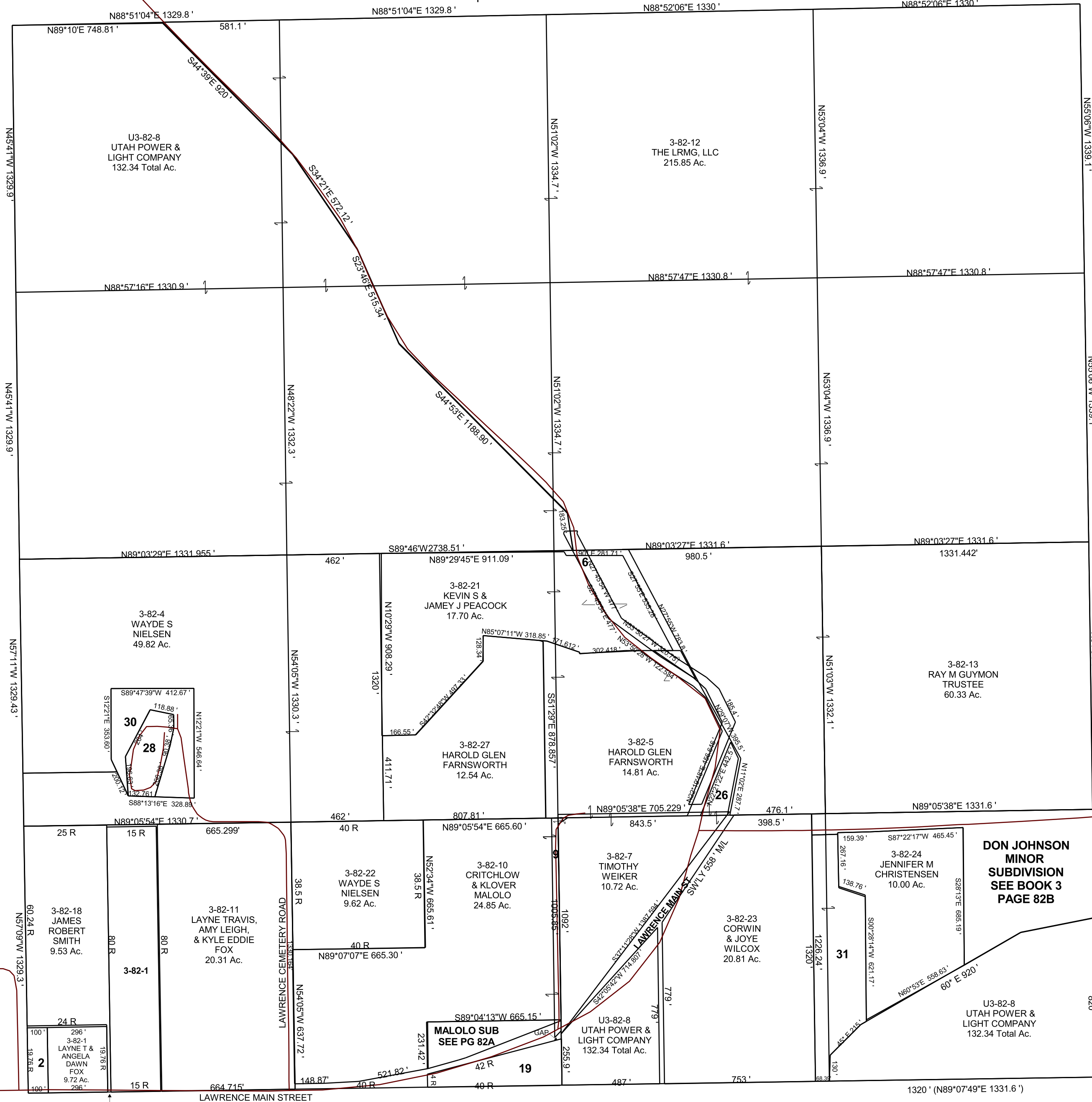


SECTION 33, T 17 S, R 09 E S.L.B. & M.

THIS PLAT IS MADE SOLELY FOR THE PURPOSE OF ASSISTING IN LOCATING THE LAND, AND THE RECORDER ASSUMES NO LIABILITY FOR VARIATIONS, IF ANY, WITH AN ACTUAL SURVEY.



- 3-82-2 LAYNE TRAVIS, AMY LEIGH, & KYLE EDDIE FOX 0.75 Ac.
- 3-82-6 EMERY COUNTY 2.08 Ac.
- 3-82-9 EMERY COUNTY 0.83 Ac.
- 3-82-19 LAYNE TRAVIS, AMY LEIGH, & KYLE EDDIE FOX 2.29 AC.
- 3-82-26 EMERY COUNTY 0.74 Ac.
- 3-82-28 EMERY COUNTY 1.65 Ac.
- 3-82-30 EMERY COUNTY 3.29 Ac.
- 3-82-31 CORWIN & JOYE WILCOX 5.83 Ac.

**DON JOHNSON
MINOR
SUBDIVISION
SEE BOOK 3
PAGE 82B**

