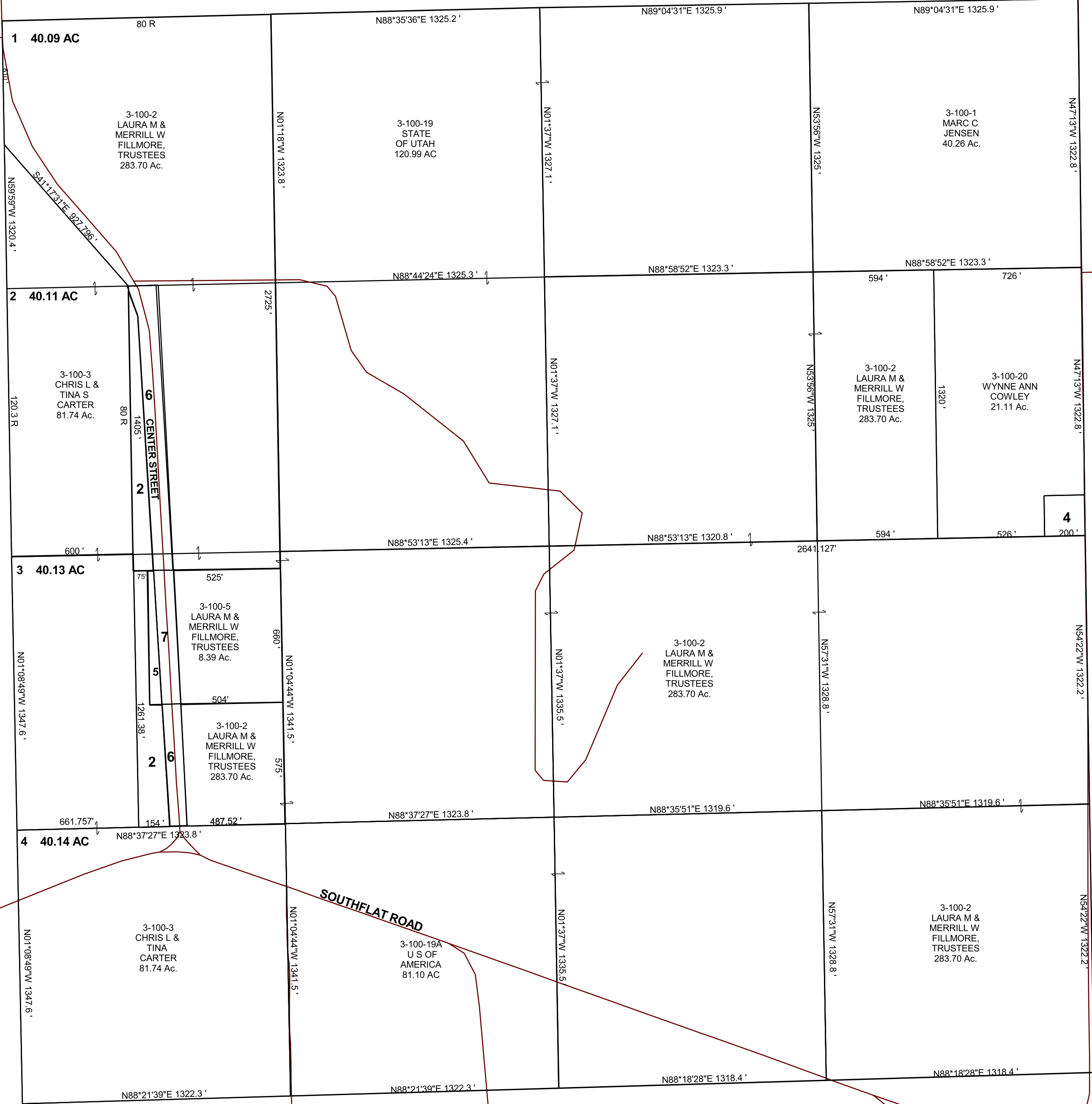


SECTION 19, T 17 S, R 10 E S.L.B. & M.

BOOK 3 PAGE 100
SCALE: 1" = 400'
DECEMBER 15, 2022

THIS PLAT IS MADE SOLELY FOR THE PURPOSE OF ASSISTING IN LOCATING THE LAND, AND THE RECORDER ASSUMES NO LIABILITY FOR VARIATIONS, IF ANY, WITH AN ACTUAL SURVEY.



3-100-4
WYNNANNE
COWLEY
0.92 Ac.

3-100-6
EMERY
COUNTY
5.77 Ac.

3-100-7
EMERY
COUNTY
1.43 Ac.

1000 E

3-100
19-17S-10E