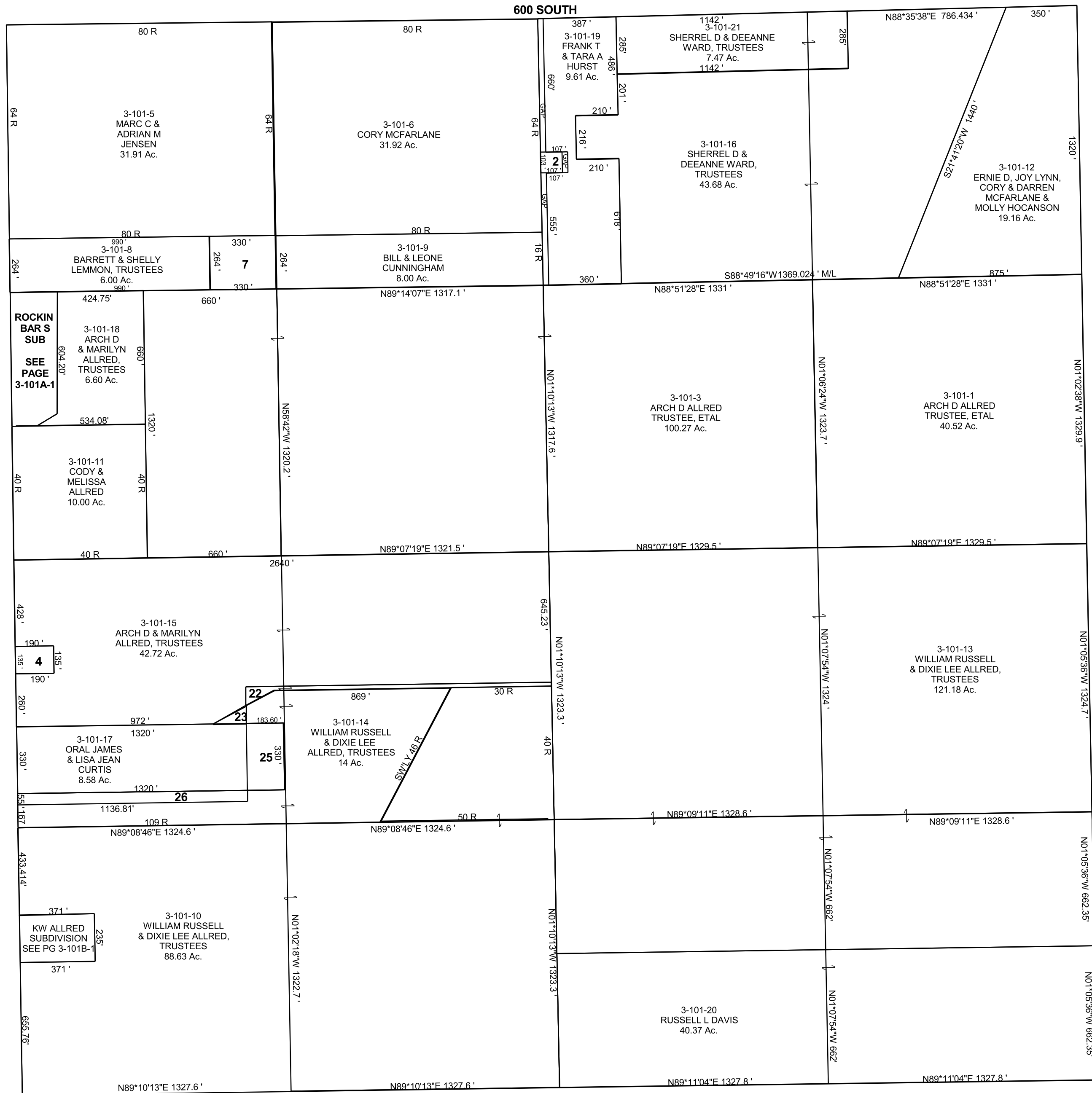


SECTION 20, T 17 S, R 10 E S.L.B. & M.

THIS PLAT IS MADE SOLELY FOR THE PURPOSE OF ASSISTING IN LOCATING THE LAND, AND THE RECORDER ASSUMES NO LIABILITY FOR VARIATIONS, IF ANY, WITH AN ACTUAL SURVEY.



- 3-101-2
CORY MCFARLANE
0.25 Ac.
- 3-101-4
CASEY A
& DEBRA L
ALLRED
0.59 Ac.
- 3-101-7
BILL & LEONE
CUNNINGHAM
2.00 Ac.
- 3-101-22
WILLIAM RUSSELL
& DIXIE LEE ALLRED,
TRUSTEES
0.79 Ac.
- 3-101-23
ARCH & MARILYN
ALLRED, TRUSTEES
0.17 Ac.
- 3-101-25
WILLIAM RUSSELL
& DIXIE LEE
ALLRED
1.42 Ac.
- 3-101-26
ORAL JAMES
& LISA JEAN
CURTIS
1.44 Ac.