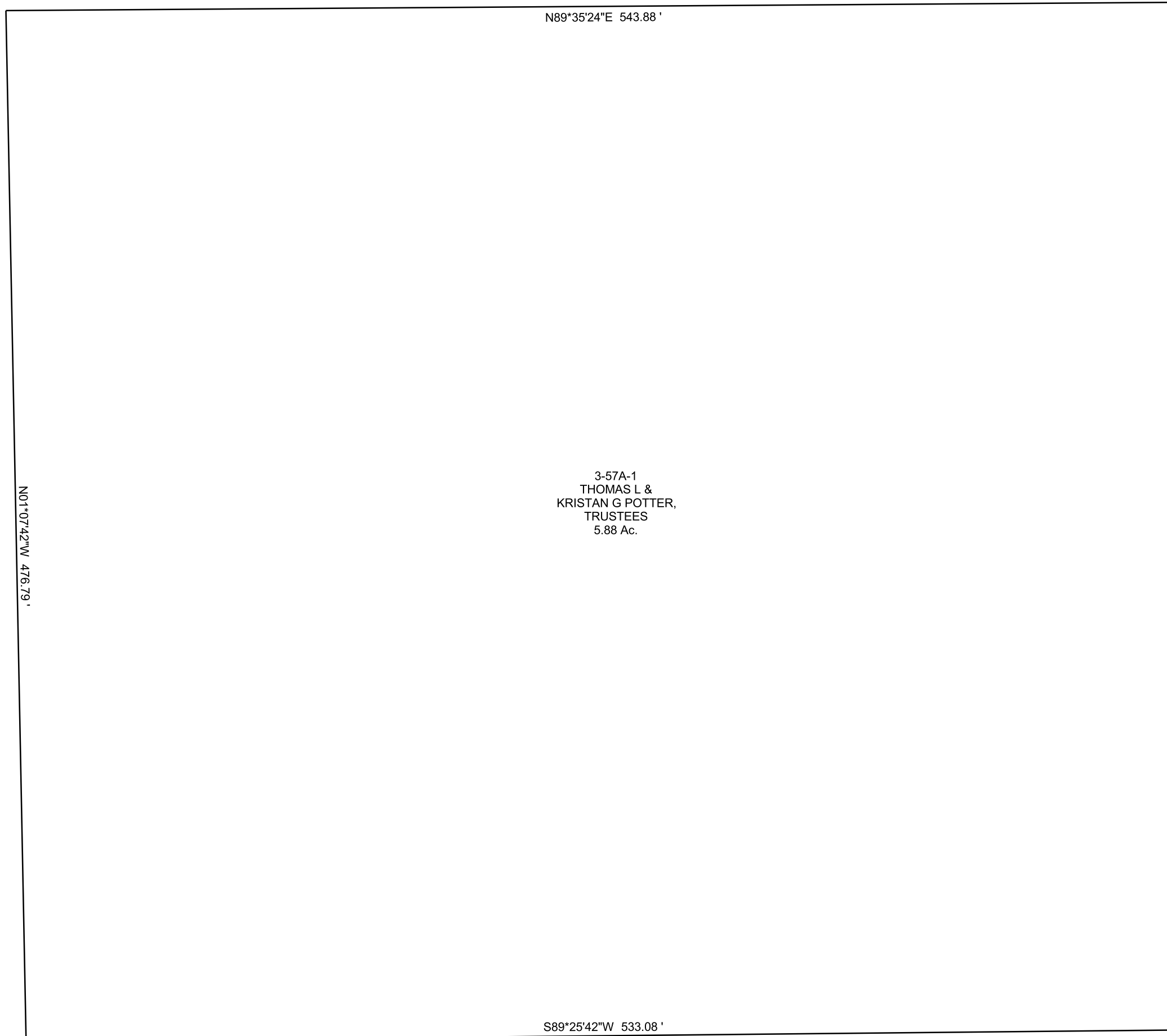


TOM & KRISTAN POTTER SUBDIVISION  
SW/4 SW/4, SECTION 8, T 17 S, R 9 E S.L.B. & M.

THIS PLAT IS MADE SOLELY FOR THE PURPOSE  
OF ASSISTING IN LOCATING THE LAND, AND  
THE RECORDER ASSUMES NO LIABILITY FOR  
VARIATIONS, IF ANY, WITH AN ACTUAL SURVEY.



MOHRLAND ROAD