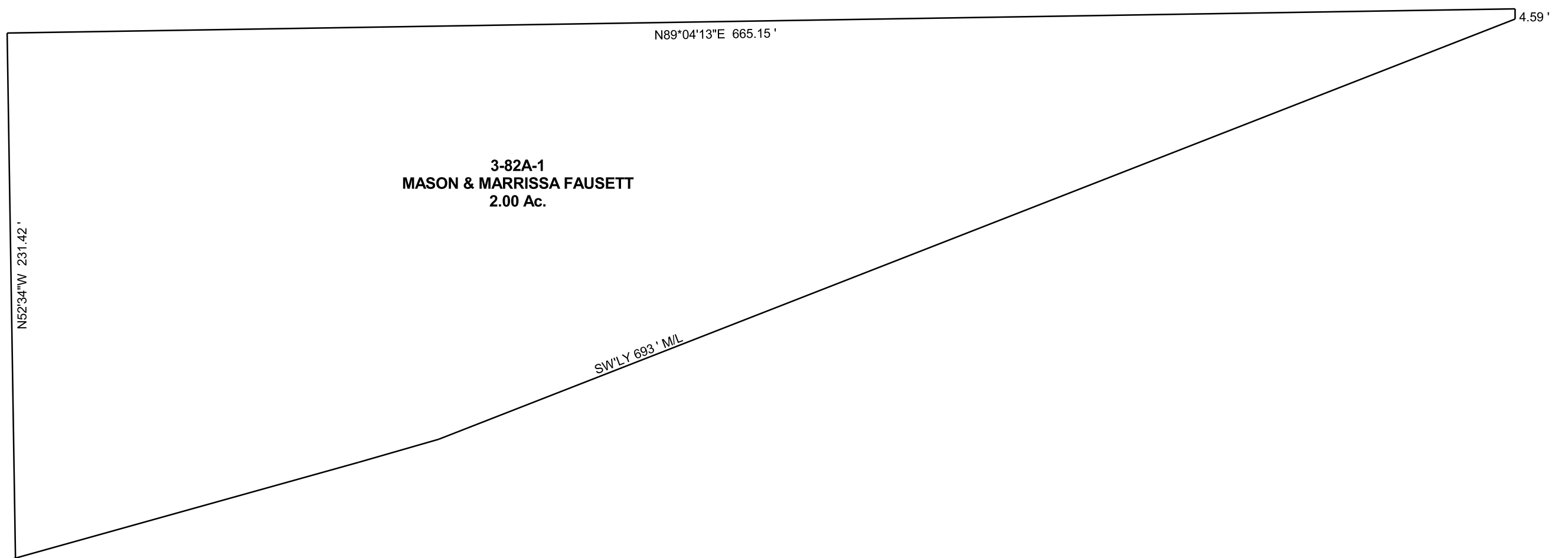


MALOLO SUBDIVISION

SE/4 SW/4 SECTION 33, T 17 S, R 9 E S.L.B. & M.

THIS PLAT IS MADE SOLELY FOR THE PURPOSE
OF ASSISTING IN LOCATING THE LAND, AND
THE RECORDER ASSUMES NO LIABILITY FOR
VARIATIONS, IF ANY, WITH AN ACTUAL SURVEY.



3-82A-1
MASON & MARRISSA FAUSETT
2.00 Ac.