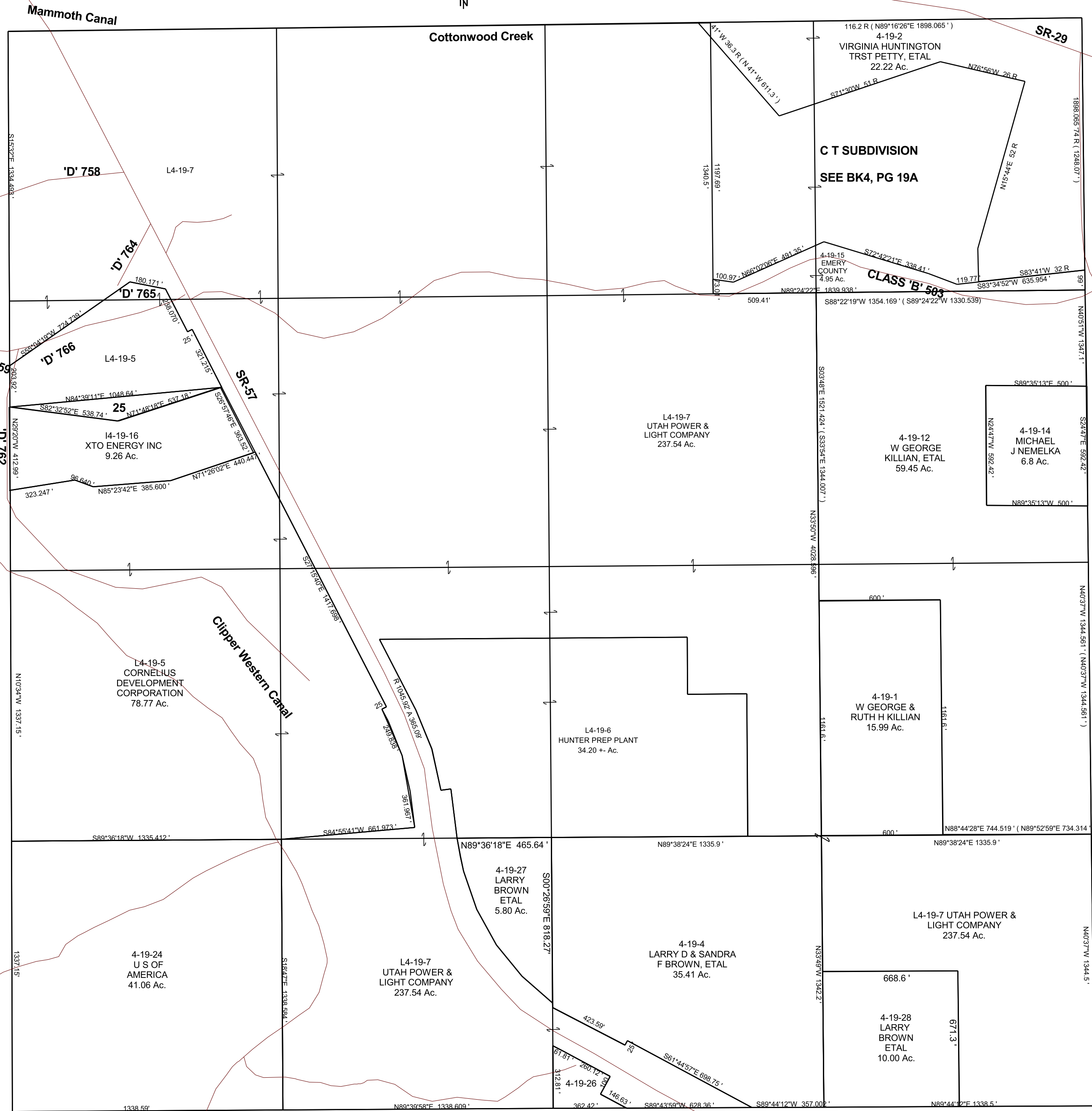


SECTION 24, T 18 S, R 7 E S.L.B. & M.



THIS PLAT IS MADE SOLELY FOR THE PURPOSE OF ASSISTING IN LOCATING THE LAND, AND THE RECORDER ASSUMES NO LIABILITY FOR VARIATIONS, IF ANY, WITH AN ACTUAL SURVEY.



14-19-25  
XTO ENERGY INC  
1.44 Ac.

4-19-26  
COTTONWOOD  
CREEK  
CONSOLIDATED  
IRRIGATION  
COMPANY  
1.50 Ac.

CLASS 'B' 503

C T SUBDIVISION  
SEE BK4, PG 19A

CLASS 'B' 503

L4-19-7  
UTAH POWER &  
LIGHT COMPANY  
237.54 Ac.

4-19-12  
W GEORGE  
KILLIAN, ETAL  
59.45 Ac.

4-19-14  
MICHAEL  
J NEMELKA  
6.8 Ac.

14-19-16  
XTO ENERGY INC  
9.26 Ac.

L4-19-5  
CORNELIUS  
DEVELOPMENT  
CORPORATION  
78.77 Ac.

L4-19-6  
HUNTER PREP PLANT  
34.20 +/- Ac.

4-19-1  
W GEORGE &  
RUTH H KILLIAN  
15.99 Ac.

4-19-27  
LARRY  
BROWN  
ETAL  
5.80 Ac.

4-19-4  
LARRY D & SANDRA  
F BROWN, ETAL  
35.41 Ac.

L4-19-7 UTAH POWER &  
LIGHT COMPANY  
237.54 Ac.

4-19-24  
U S OF  
AMERICA  
41.06 Ac.

L4-19-7  
UTAH POWER &  
LIGHT COMPANY  
237.54 Ac.

4-19-28  
LARRY  
BROWN  
ETAL  
10.00 Ac.

4-19-26