

SECTION 21, T 18 S, R 08 E S.L.B. & M.

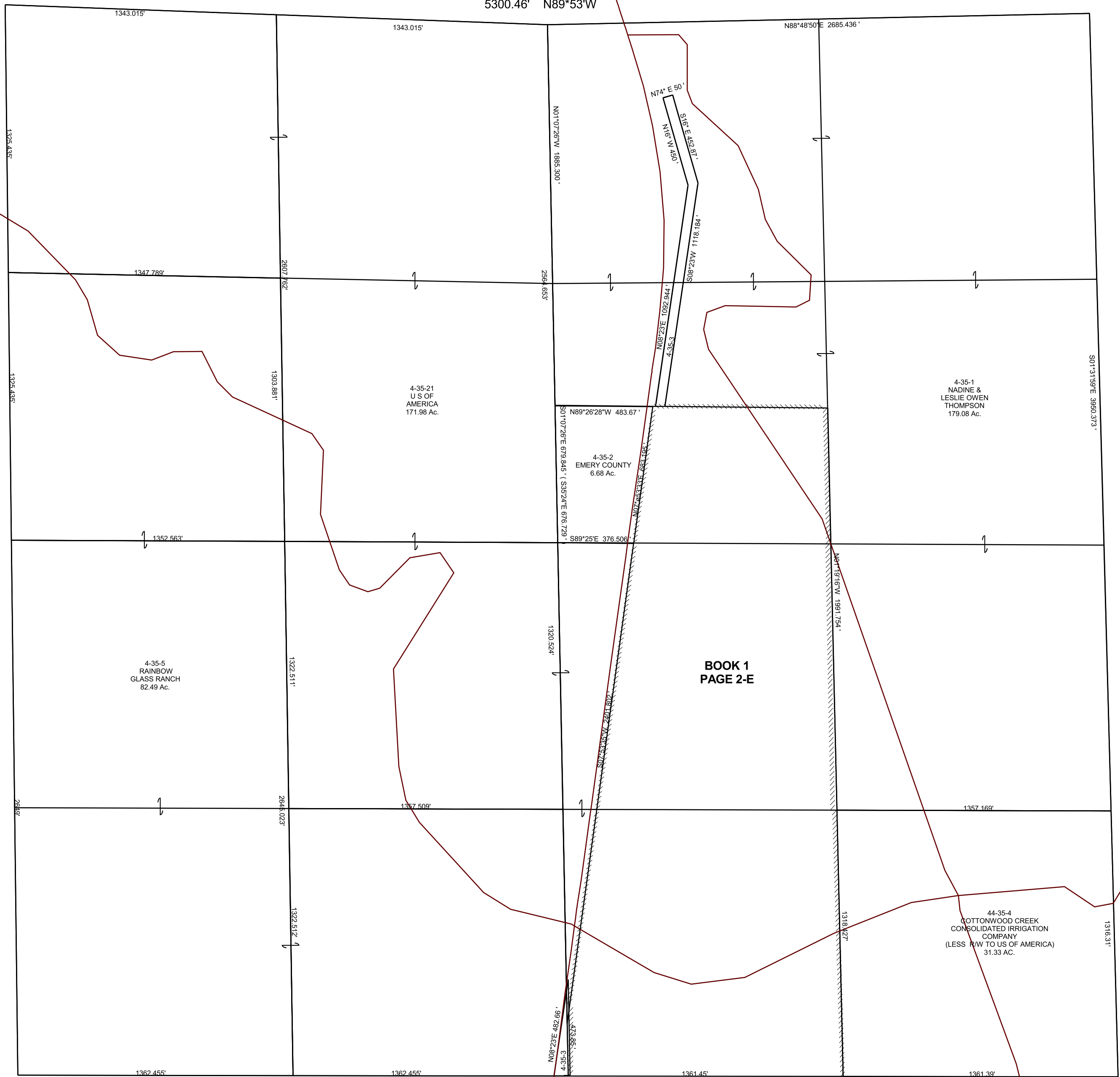
BOOK 4, PAGE 35  
SCALE: 1" = 400'  
OCTOBER 9, 2018

EX

THIS PLAT IS MADE SOLELY FOR THE PURPOSE  
OF ASSISTING IN LOCATING THE LAND, AND  
THE RECORDER ASSUMES NO LIABILITY FOR  
VARIATIONS, IF ANY, WITH AN ACTUAL SURVEY.



5300.46' N89°53'W



4-35-3  
CHURCH OF JESUS  
CHRIST OF LDS  
2.14 Ac.

4-35-21  
U.S. OF  
AMERICA  
171.98 Ac.

4-35-1  
NADINE &  
LESLIE OWEN  
THOMPSON  
179.08 Ac.

4-35-2  
EMERY COUNTY  
6.68 Ac.

4-35-5  
RAINBOW  
GLASS RANCH  
82.49 Ac.

44-35-4  
COTTONWOOD CREEK  
CONSOLIDATED IRRIGATION  
COMPANY  
(LESS RW TO U.S. OF AMERICA)  
31.33 AC.

BOOK 1  
PAGE 2-E

5313' N89°69'W

4-35  
21-18S-08E