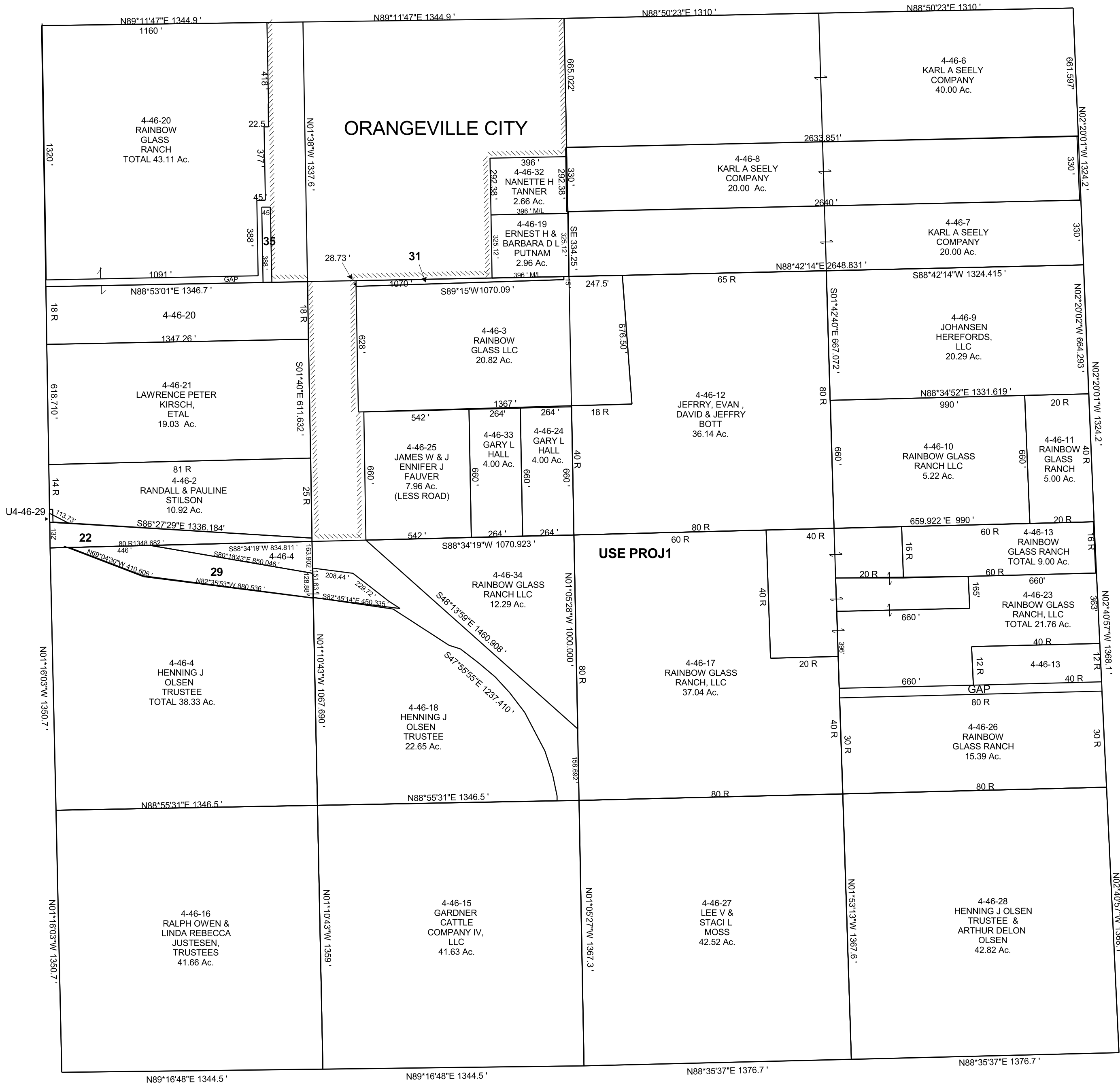


SECTION 32, T 18 S, R 08 E S.L.B. & M.

BOOK 4 PAGE 46  
SCALE: 1" = 400'  
MARCH 8, 2018

THIS PLAT IS MADE SOLELY FOR THE PURPOSE  
OF ASSISTING IN LOCATING THE LAND, AND  
THE RECORDER ASSUMES NO LIABILITY FOR  
VARIATIONS, IF ANY, WITH AN ACTUAL SURVEY.



4-46-22  
LYNN WILLIAM  
& LORI ANN  
TUTTLE  
2.30 AC.

U4-46-29  
UTAH POWER &  
LIGHT COMPANY  
TOTAL 4.88 AC.

4-46-31  
ERNEST H &  
BARBARA D L  
PUTNAM  
0.54 AC.

4-46-35  
CODY JOE &  
SHAREL SHARMON  
DALE  
0.40 AC.