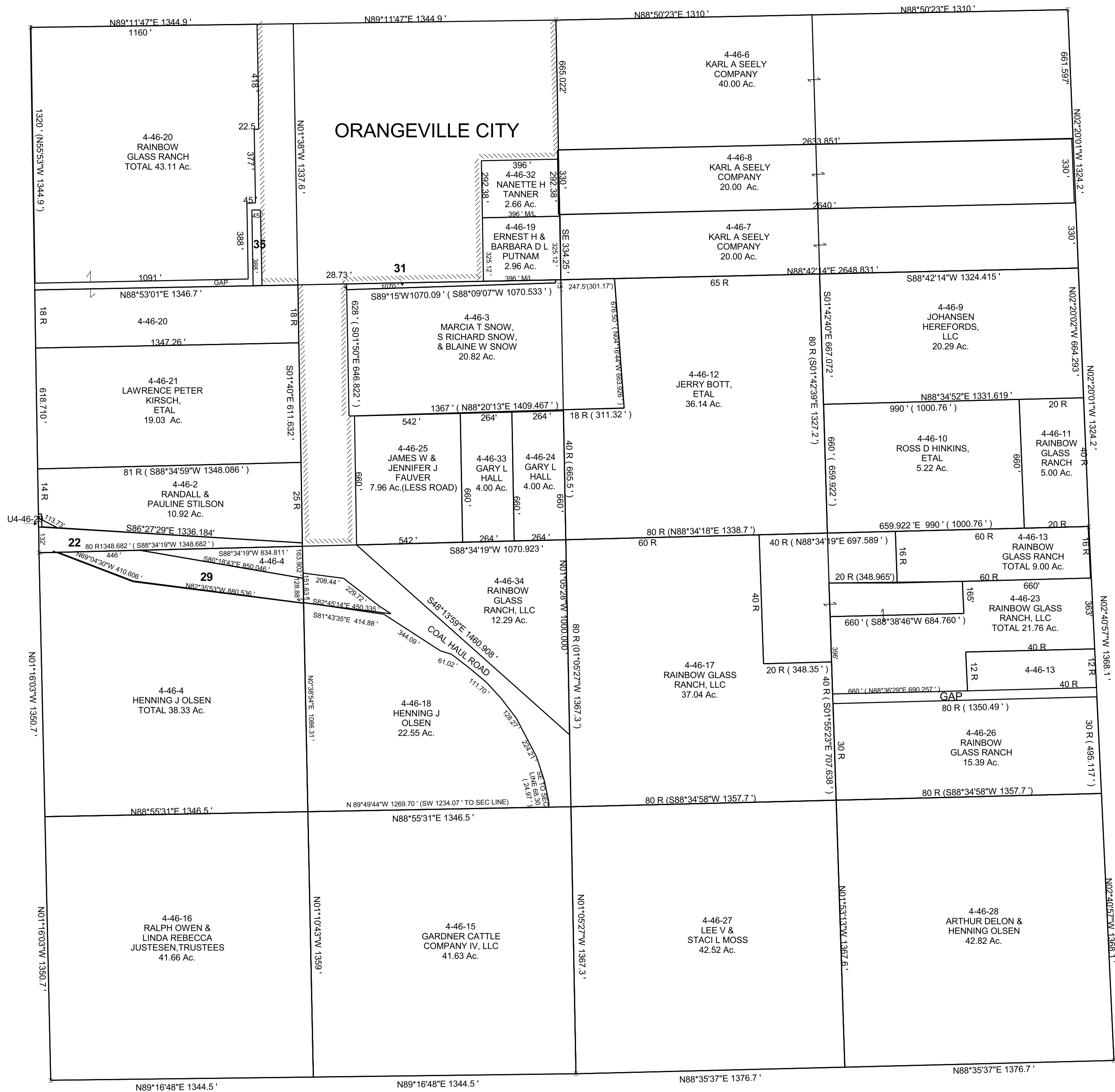


SECTION 32, T 18 S, R 08 E S.L.B. & M.

THIS PLAT IS MADE SOLELY FOR THE PURPOSE OF ASSISTING IN LOCATING THE LAND, AND THE RECORDER ASSUMES NO LIABILITY FOR VARIATIONS, IF ANY, WITH AN ACTUAL SURVEY.



4-46-22  
LYNN WILLIAM  
& LORI ANN  
TUTTLE  
2.30 AC.

U4-46-29  
UTAH POWER &  
LIGHT COMPANY  
TOTAL 4.88 AC.

4-46-31  
ERNEST H &  
BARBARA D L  
PUTNAM  
0.54 AC.

4-46-35  
SCOTT D  
WILLIAMS  
0.40 AC.